

Brexit : Results

01/12/2016

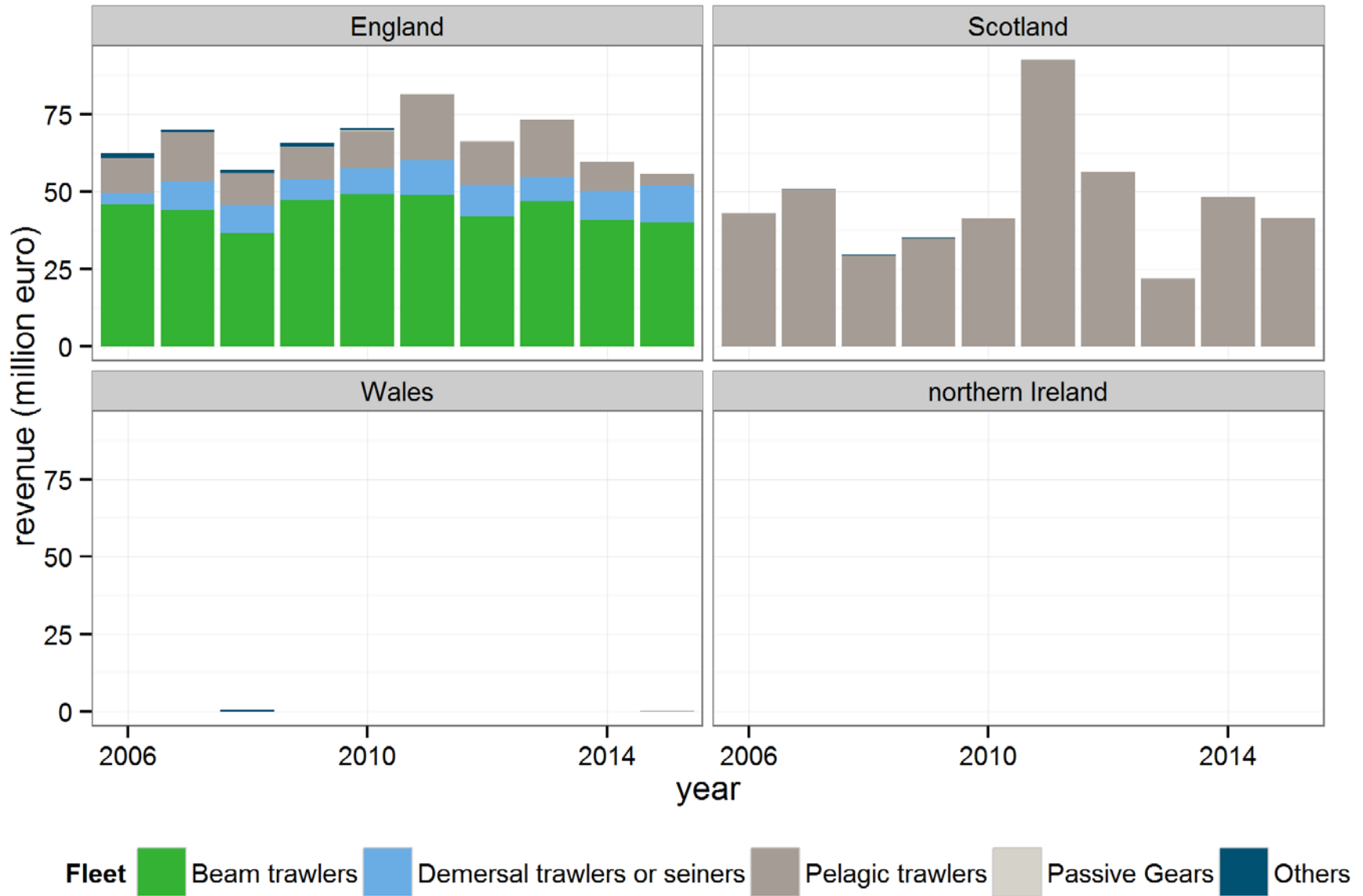
Katell Hamon (WEcR), Niels Hintzen (WMR)



Summary

- 120 million € revenue on a yearly basis inside UK waters
- 125 million KG of catch on a yearly basis inside UK waters
- 10 million days @ sea spend by the Dutch fleet inside UK waters
- Up to 50% of pelagic trawler effort inside UK waters, 30% for demersal trawlers and 10% for beamtrawl fleet
- Harbours of Texel, Arnemuiden and Goederede most affected (cutter fleet only)
- Up to 90% of total Dutch herring catch inside UK waters

Dutch¹ revenue in UK EEZ 2006-2015

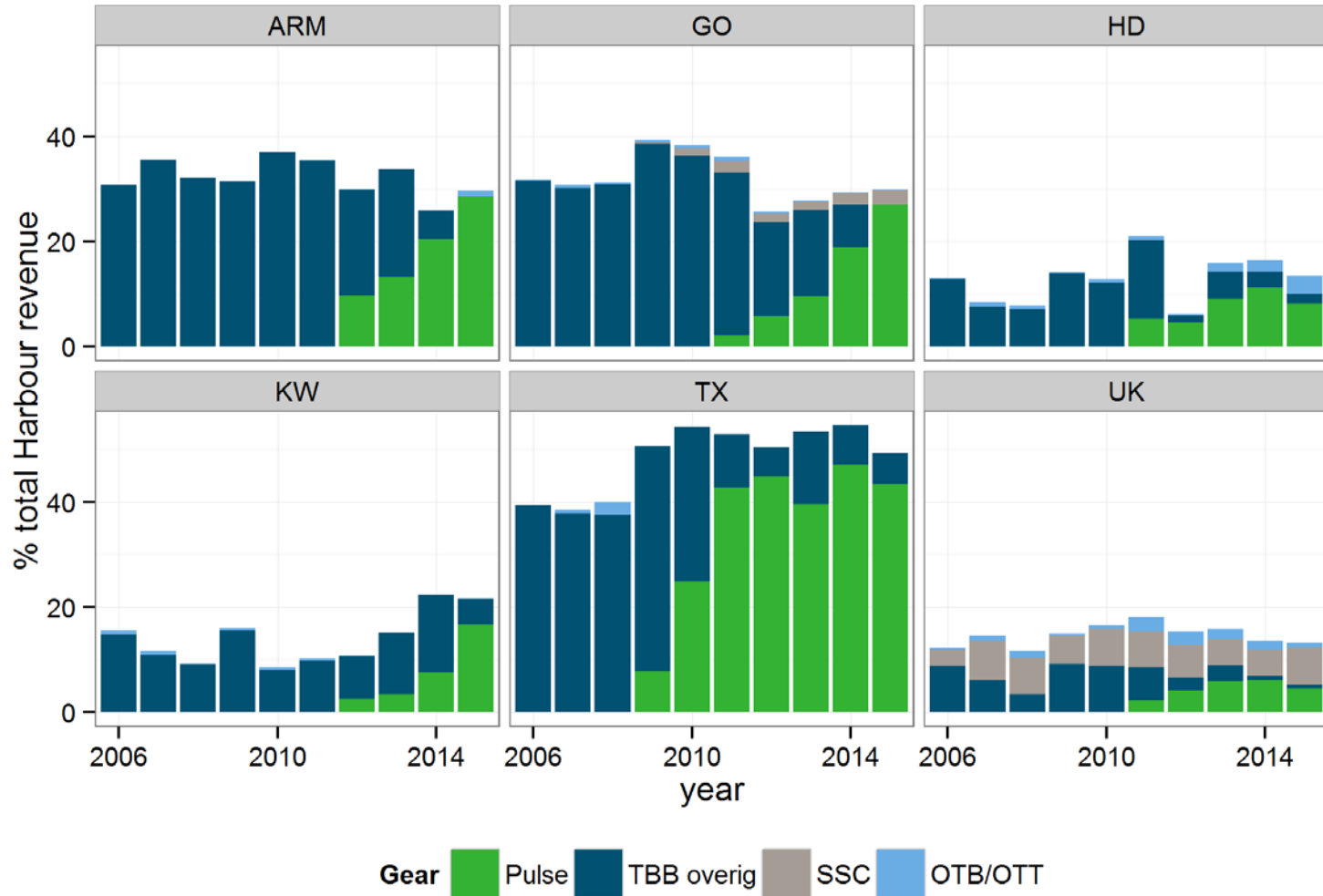


Revenue dependency on UK EEZ 2006-2015

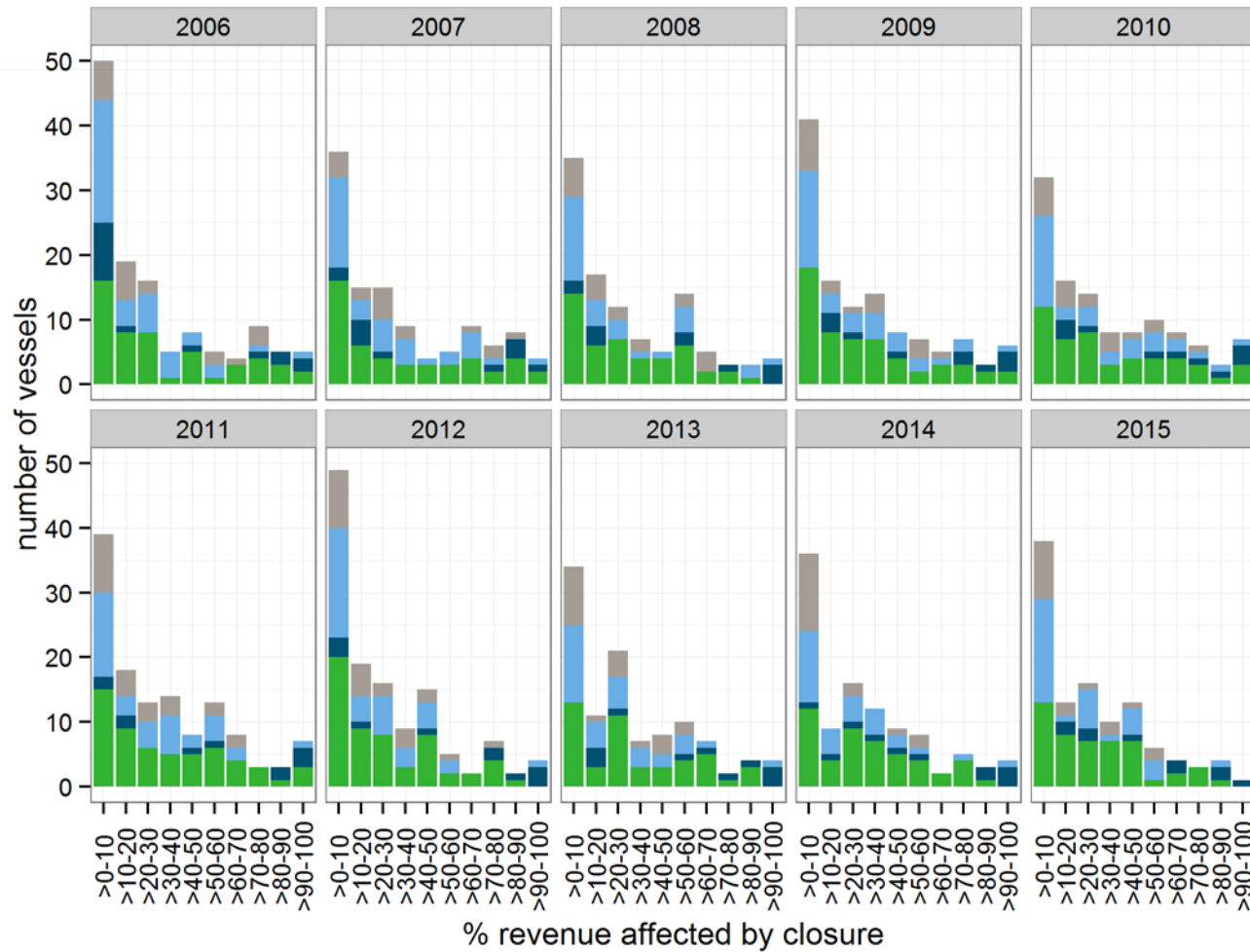


Cutter fleet:

% revenue per harbour¹ from UK EEZ

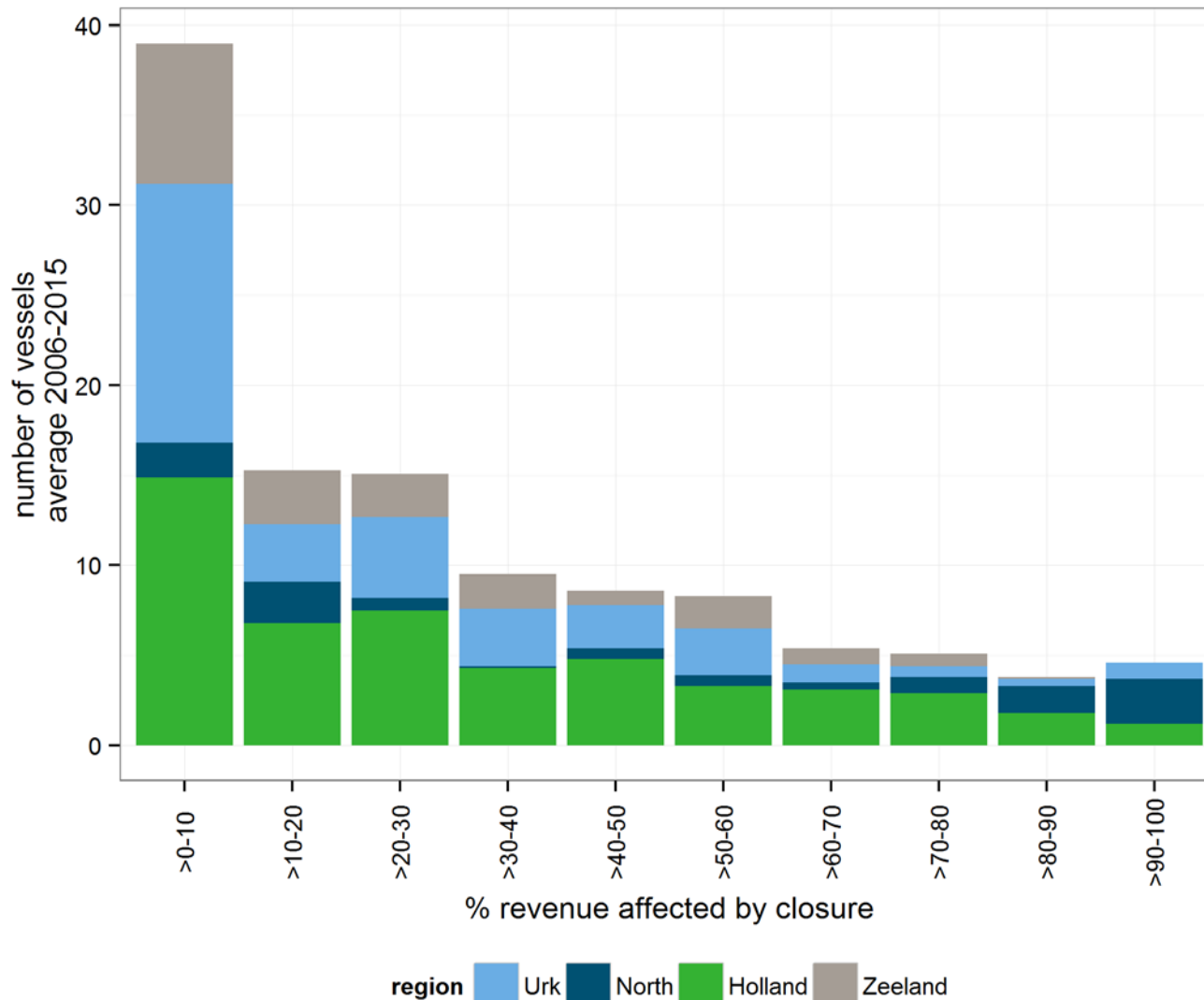


Cutter fleet¹: individual stress analysis

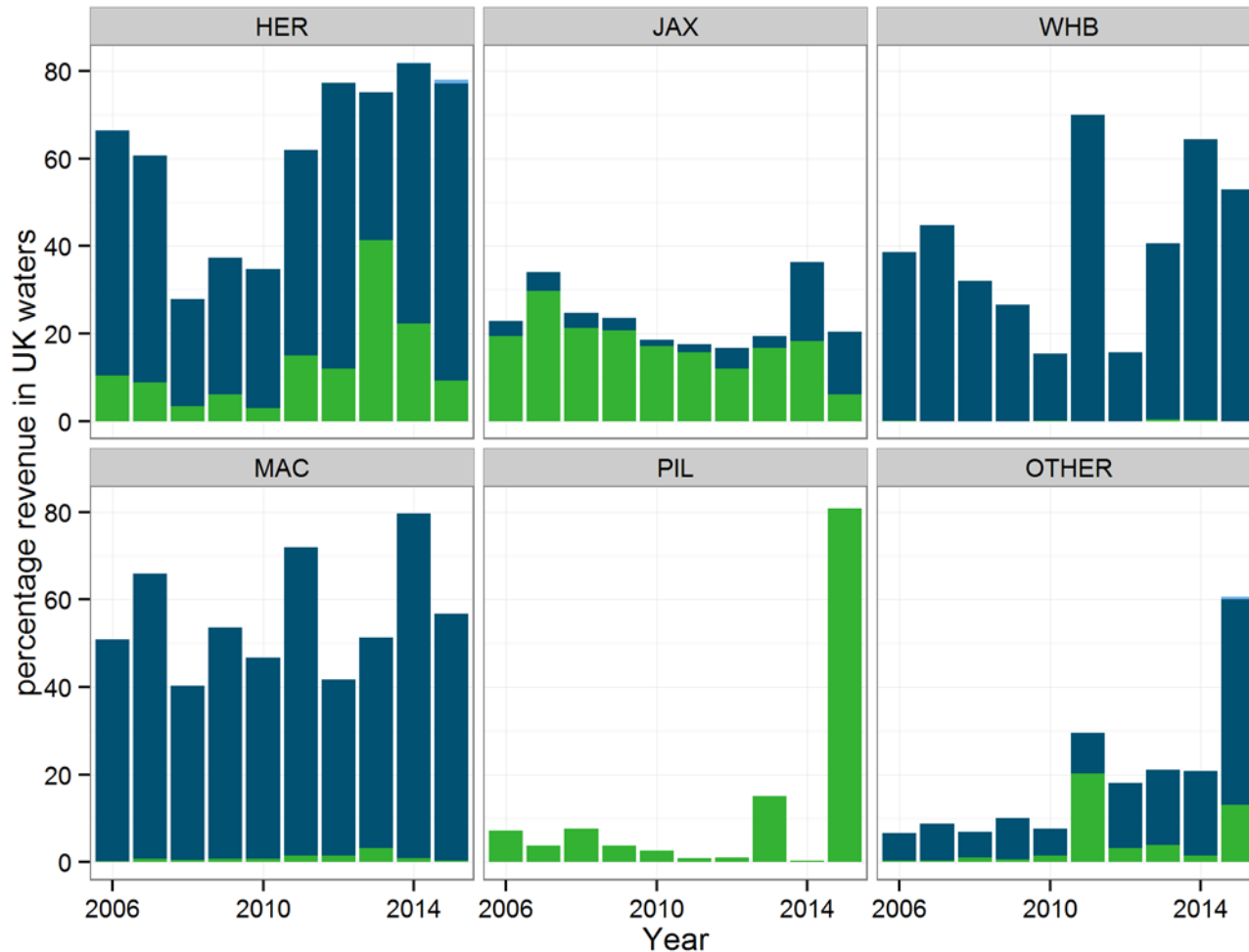


region ■ Urk ■ North ■ Holland ■ Zeeland

Cutter fleet¹: individual stress analysis



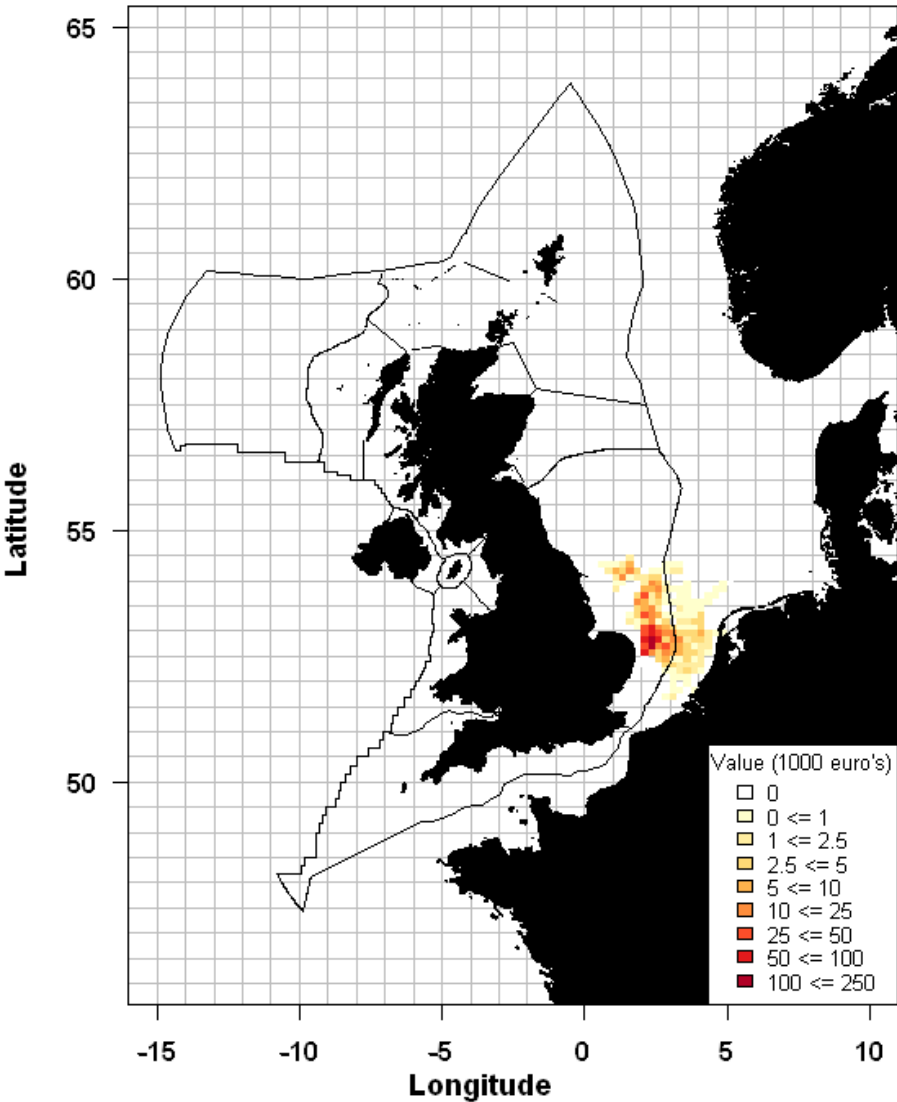
Pelagic dependency: % revenue per target species from UK EEZ



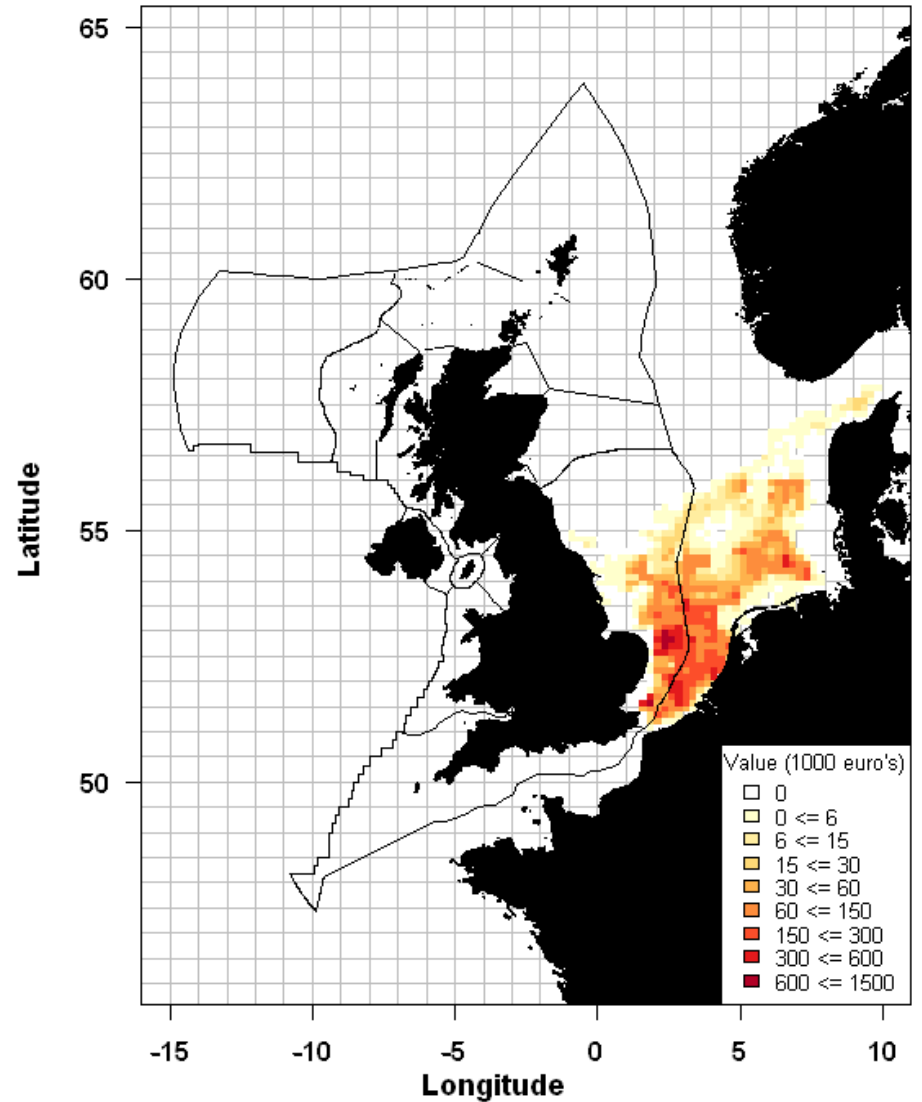
EEZ ■ England ■ Scotland ■ Wales ■ northern Ireland

Fleet distribution by period

PUL 0610

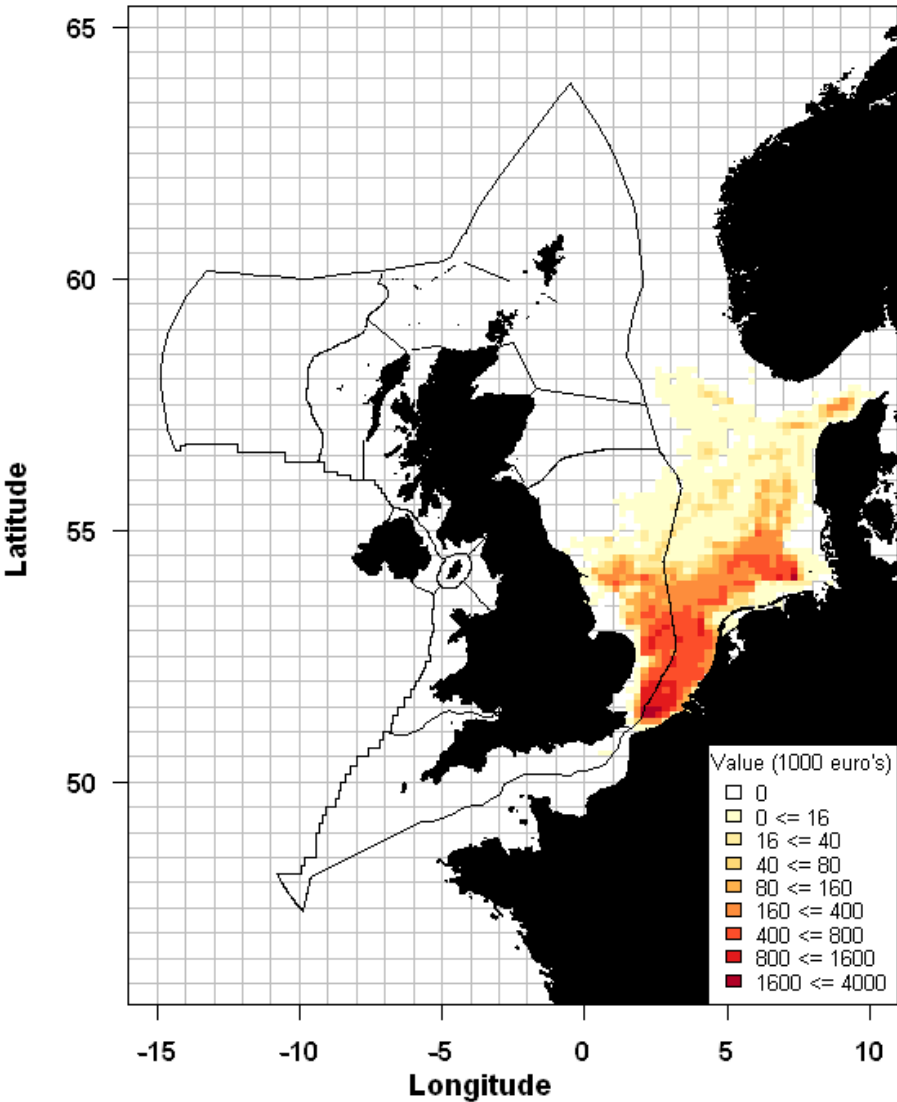


PUL 1115

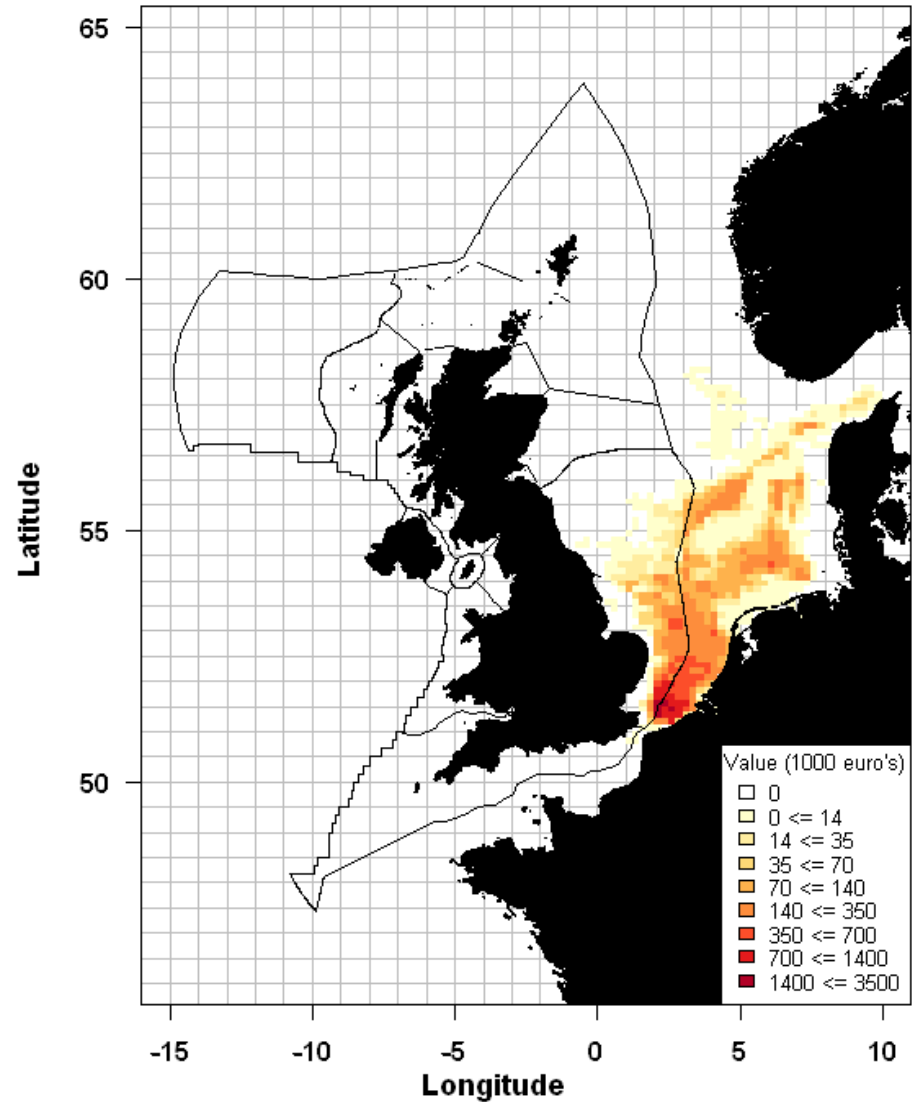


Fleet distribution by period

TBB 0610

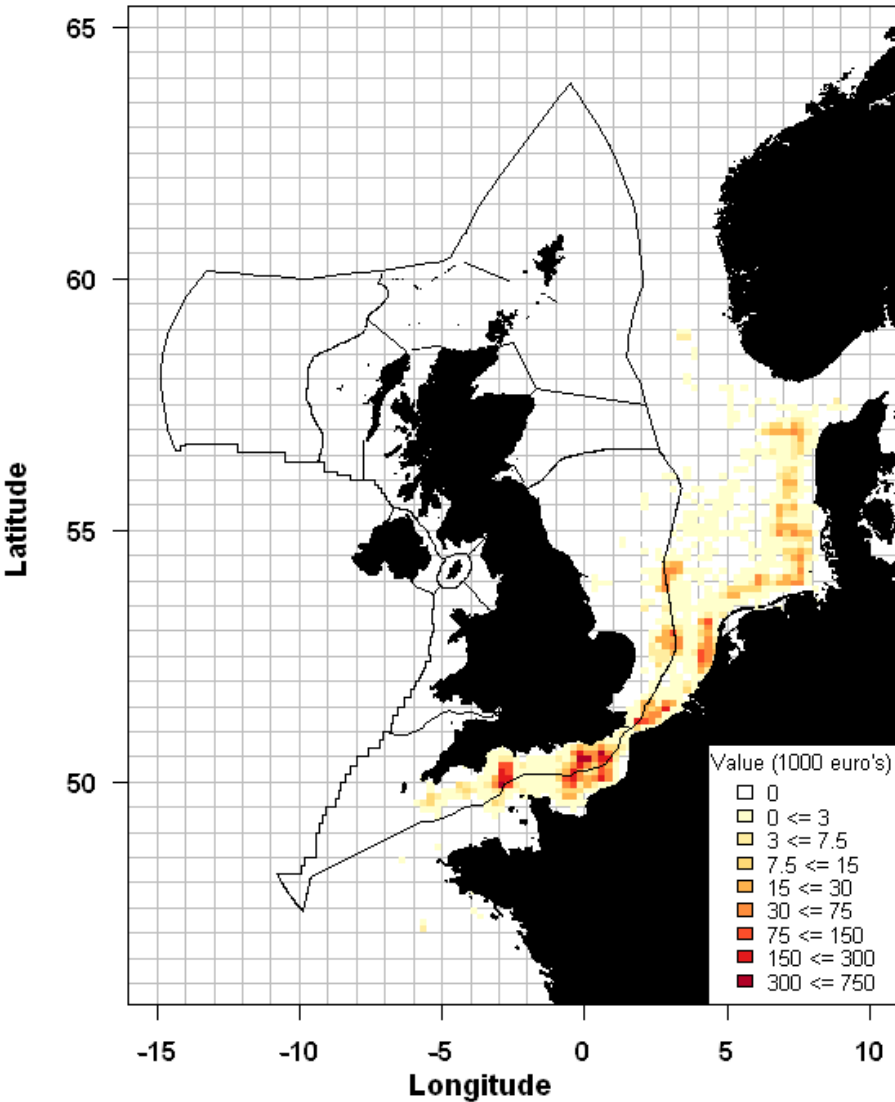


TBB 1115

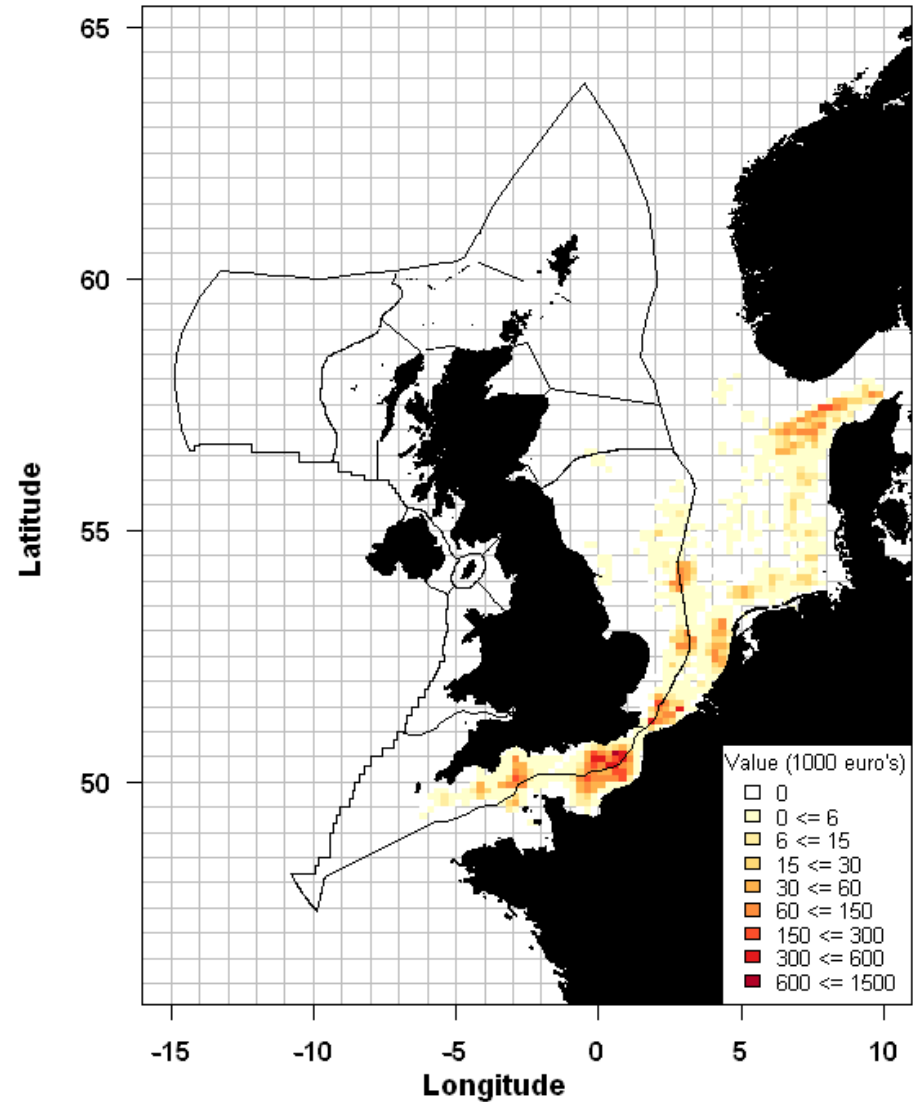


Fleet distribution by period

SSC 0610

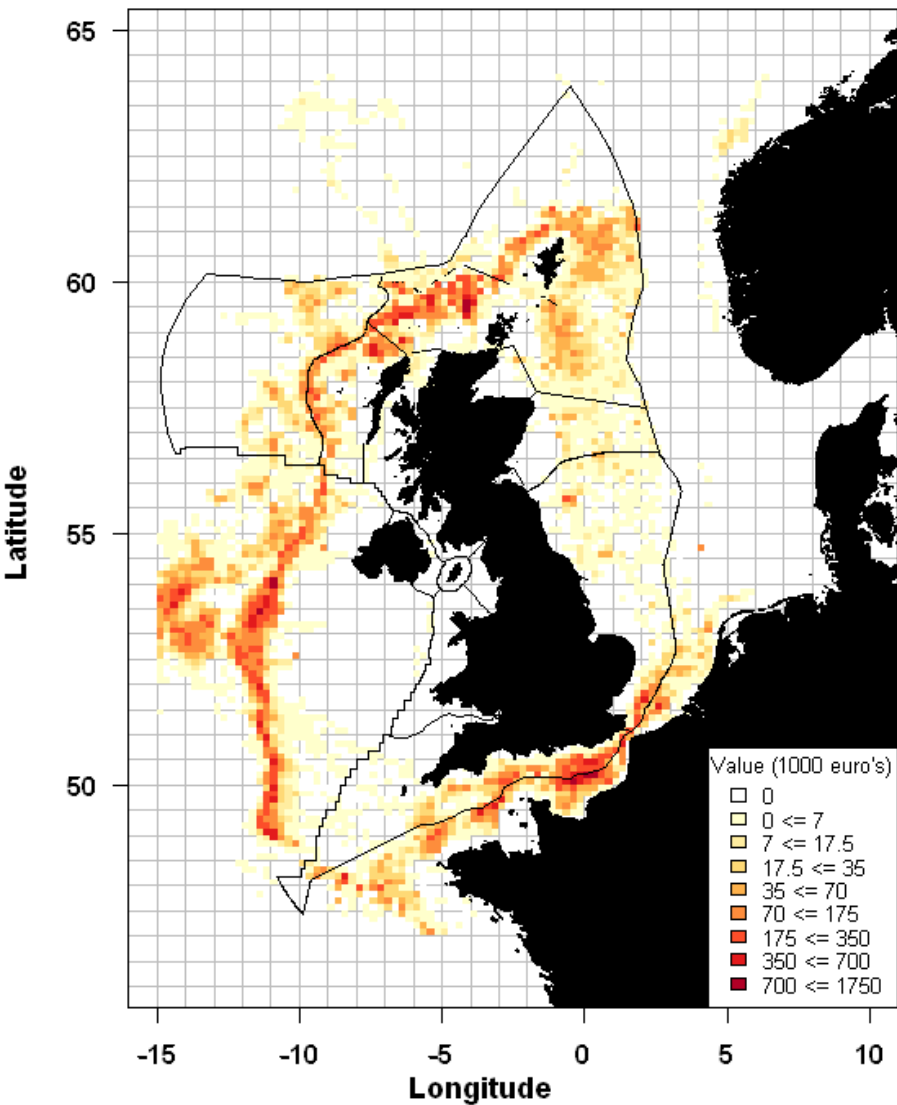


SSC 1115

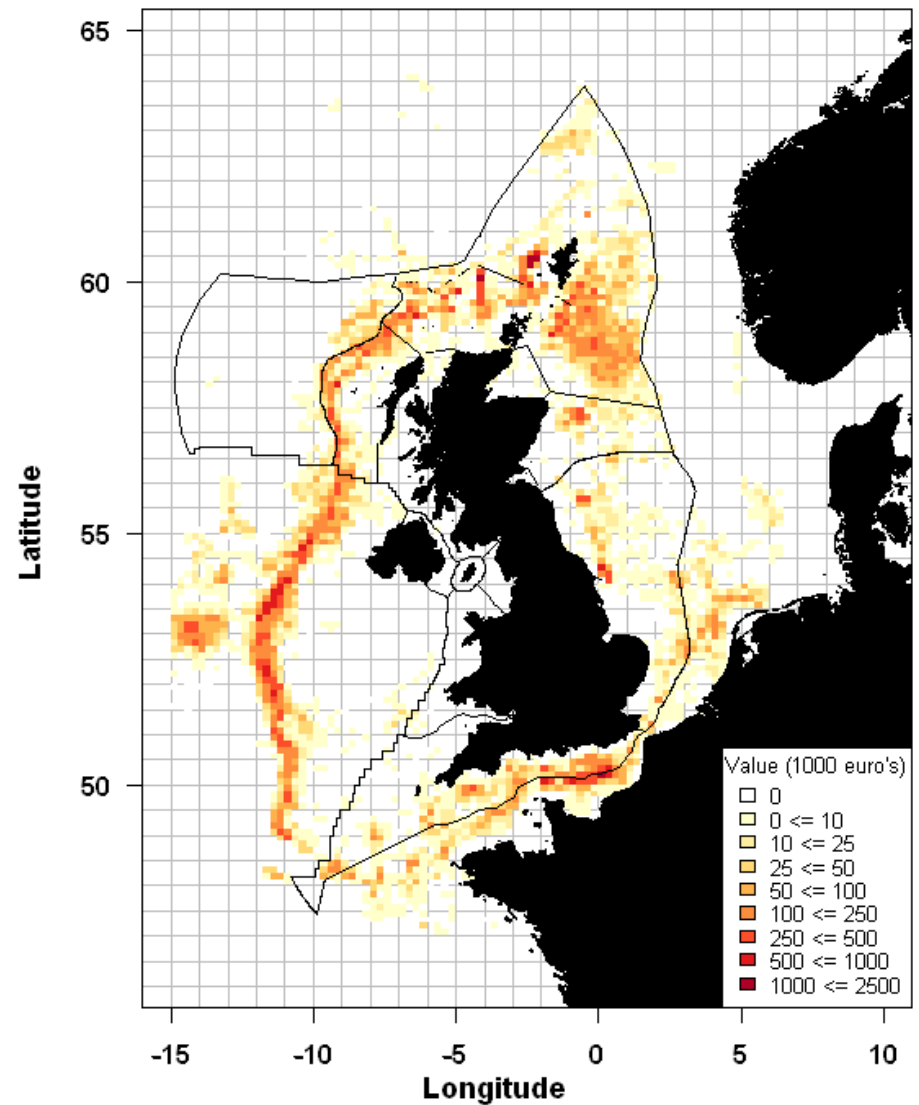


Fleet distribution by period

PEL 0610

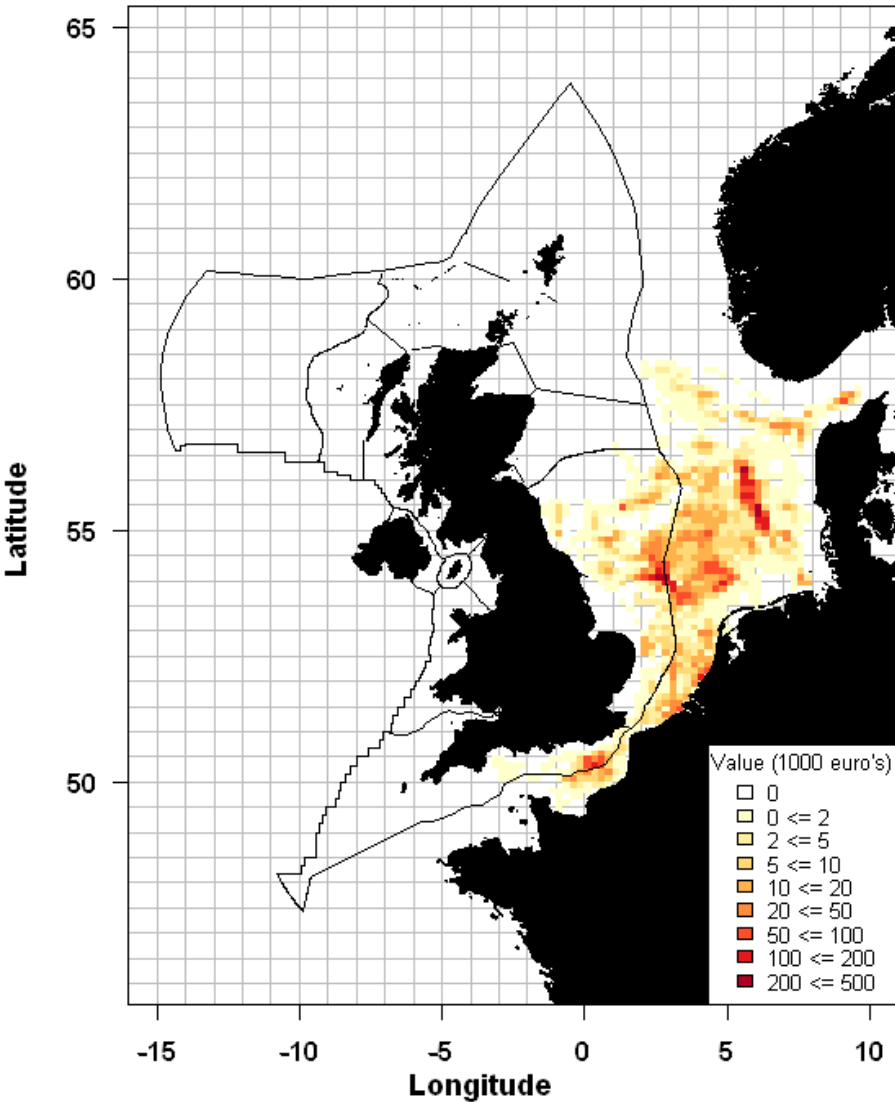


PEL 1115

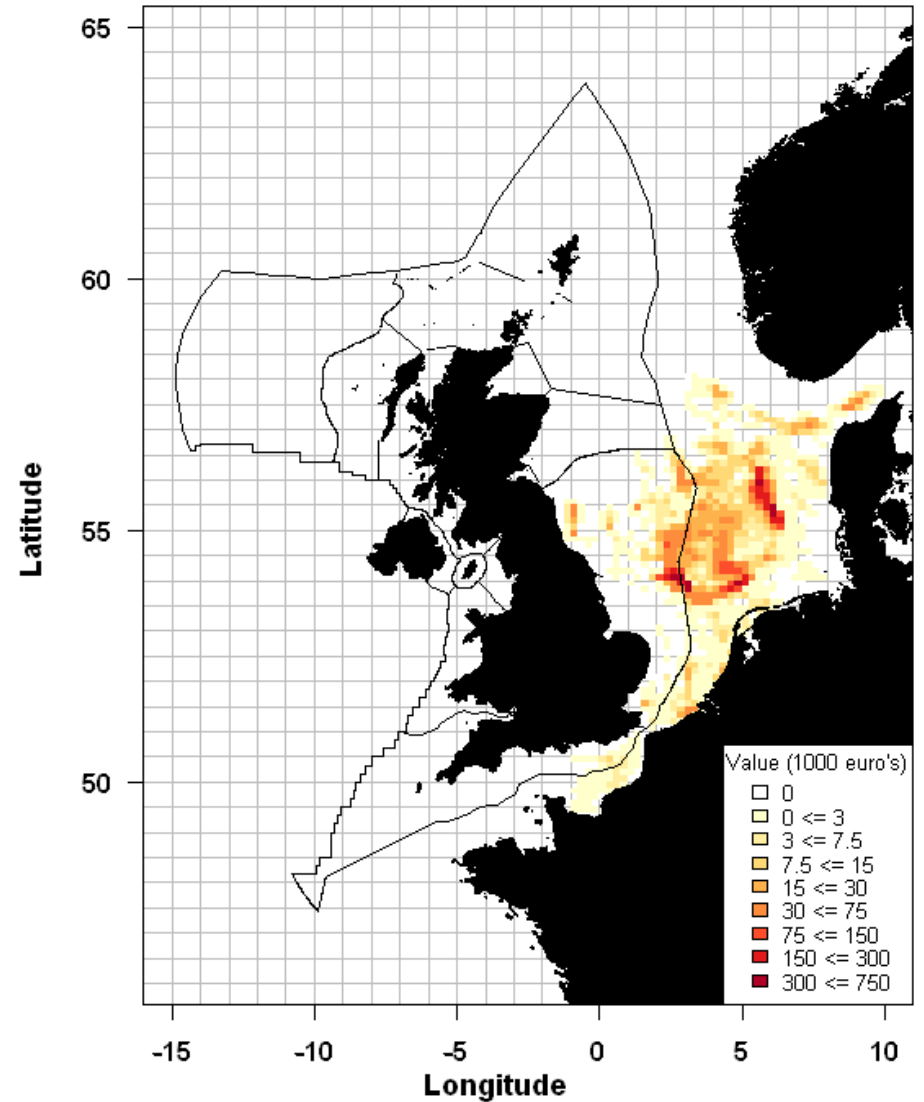


Fleet distribution by period

OTB 0610

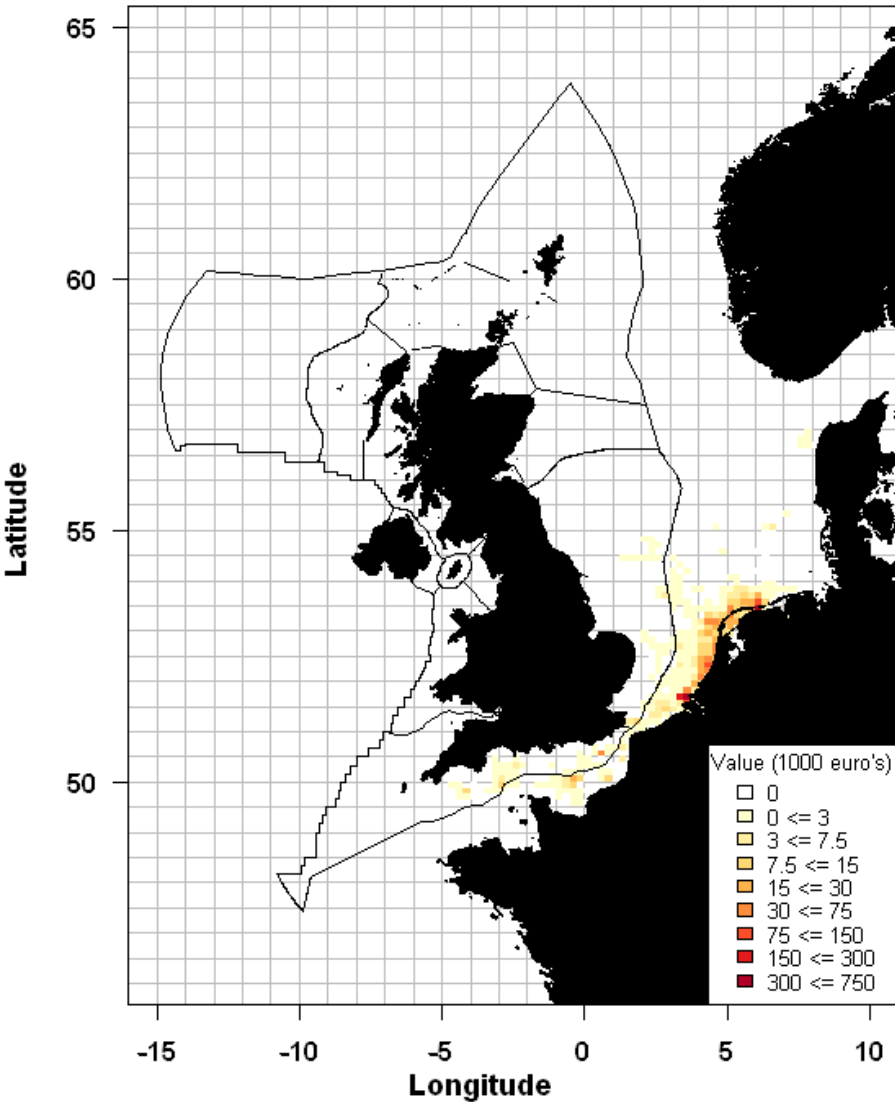


OTB 1115

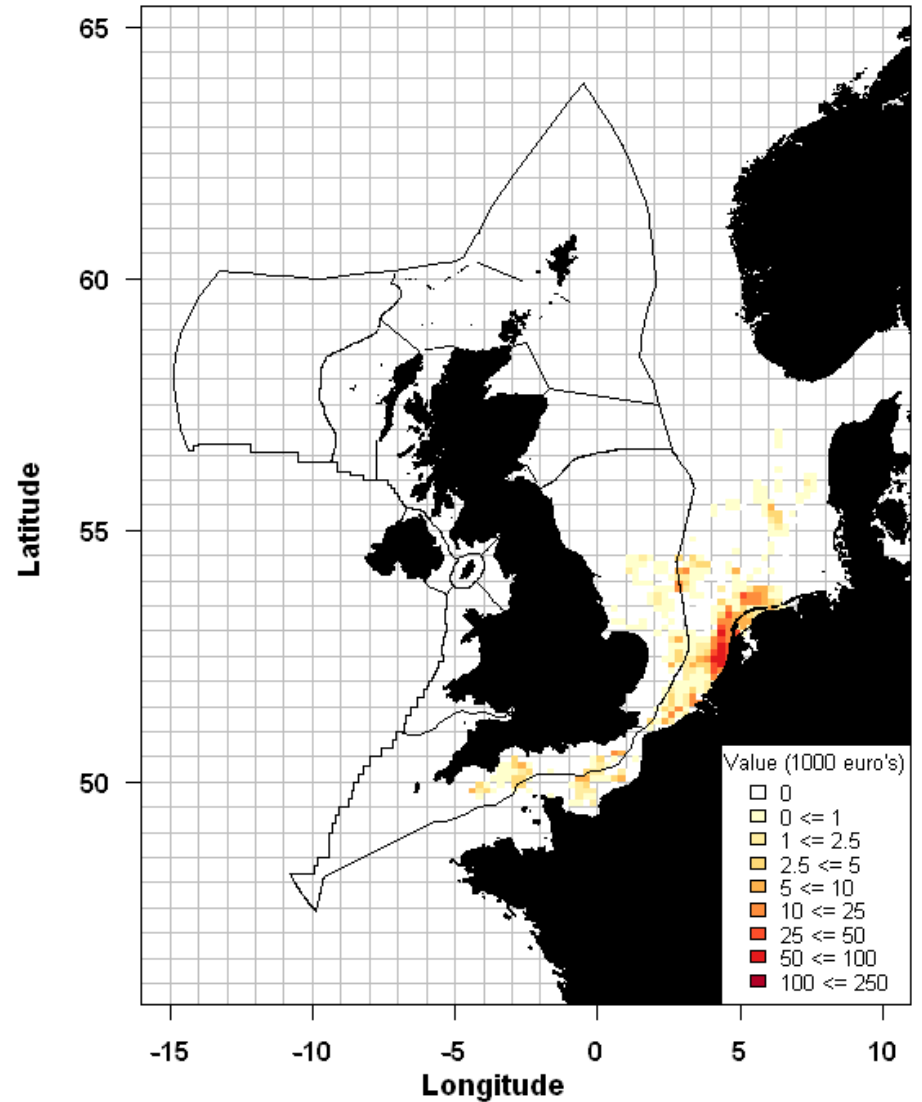


Fleet distribution by period

OTH 0610

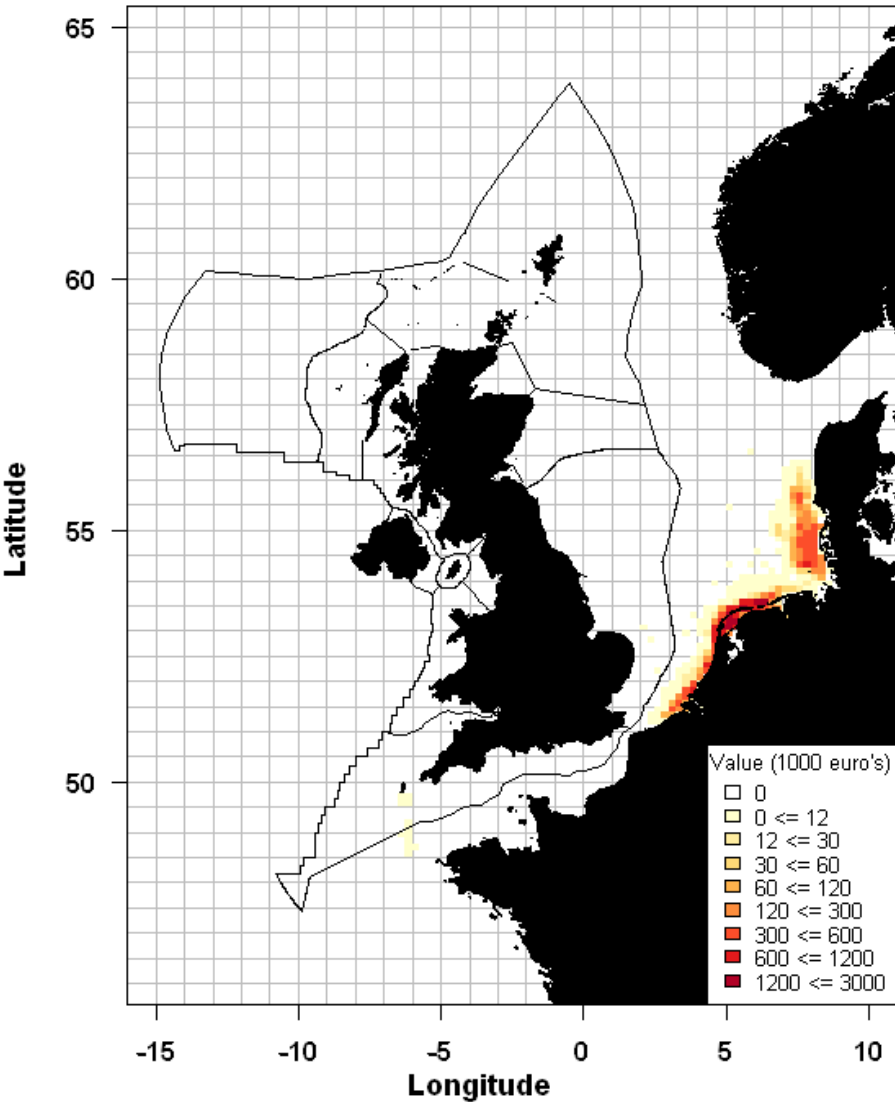


OTH 1115

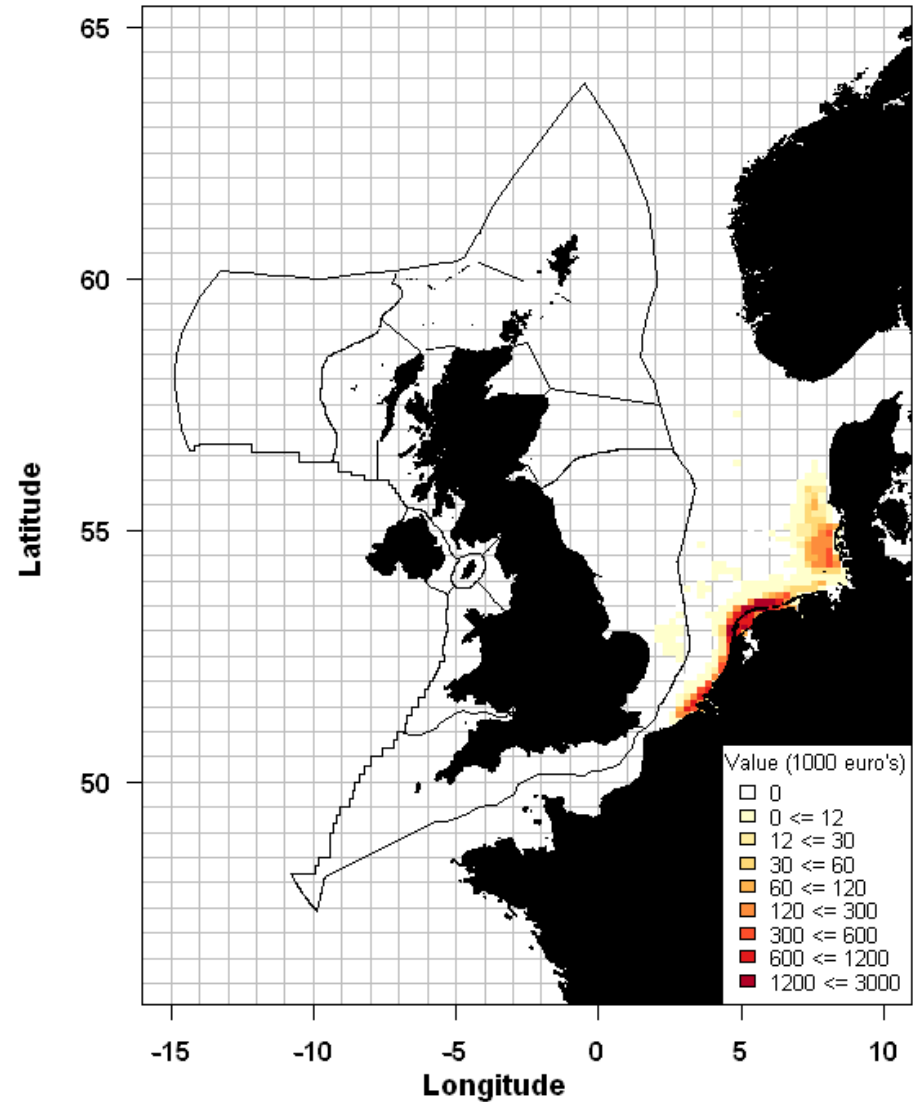


Fleet distribution by period

TBS 0610

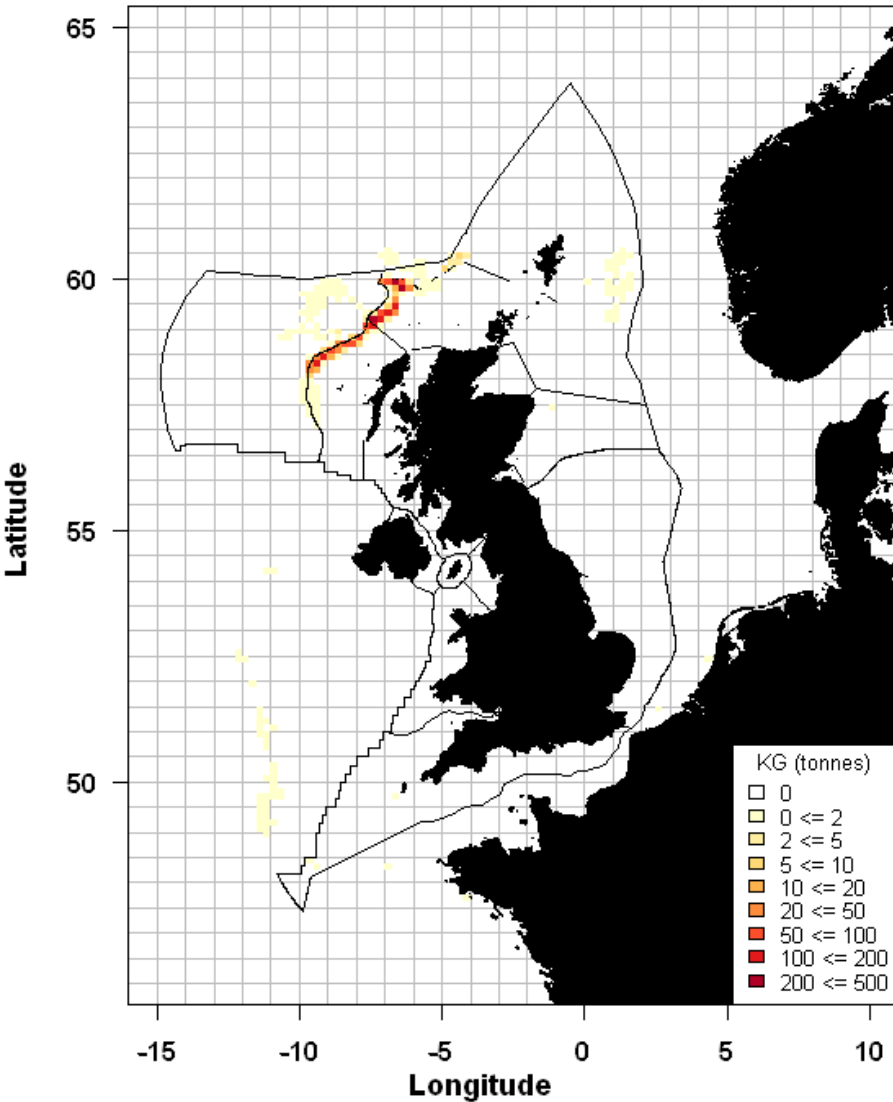


TBS 1115

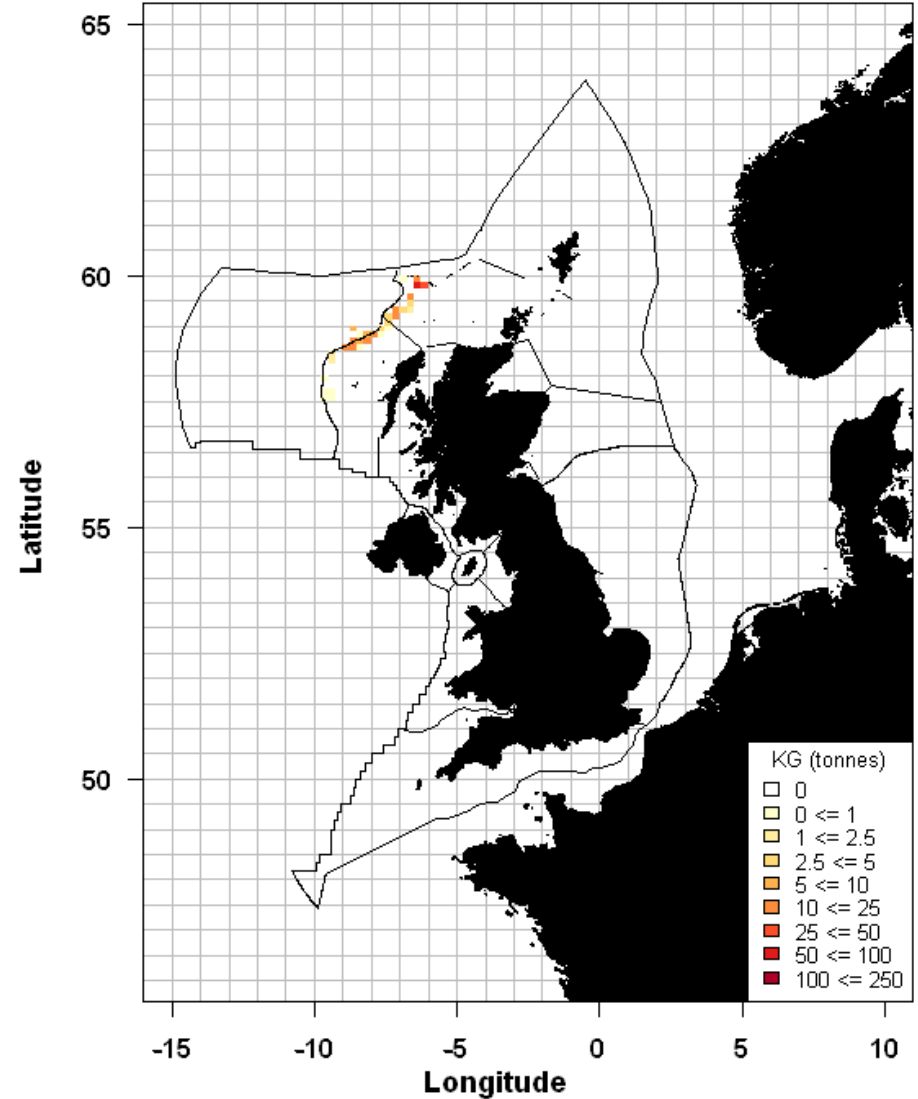


Species distribution by period

ARG 0610

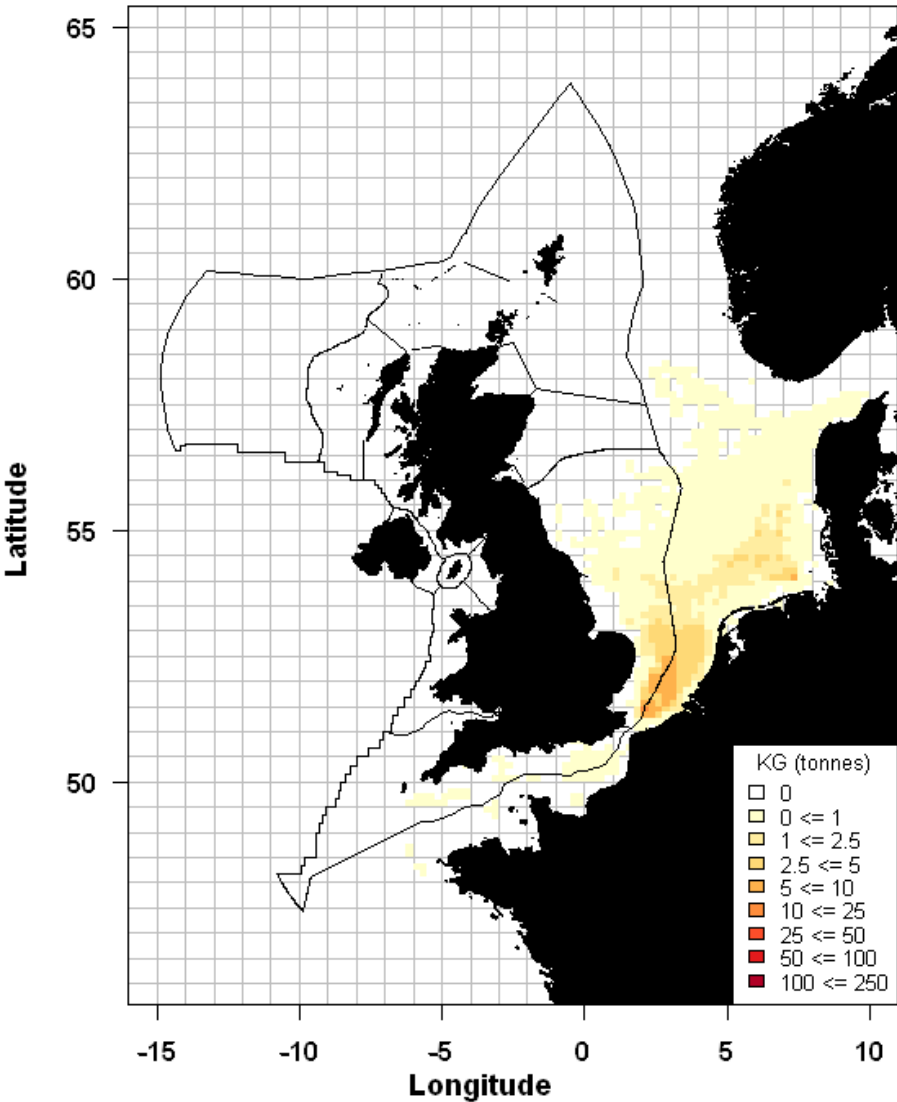


ARG 1115

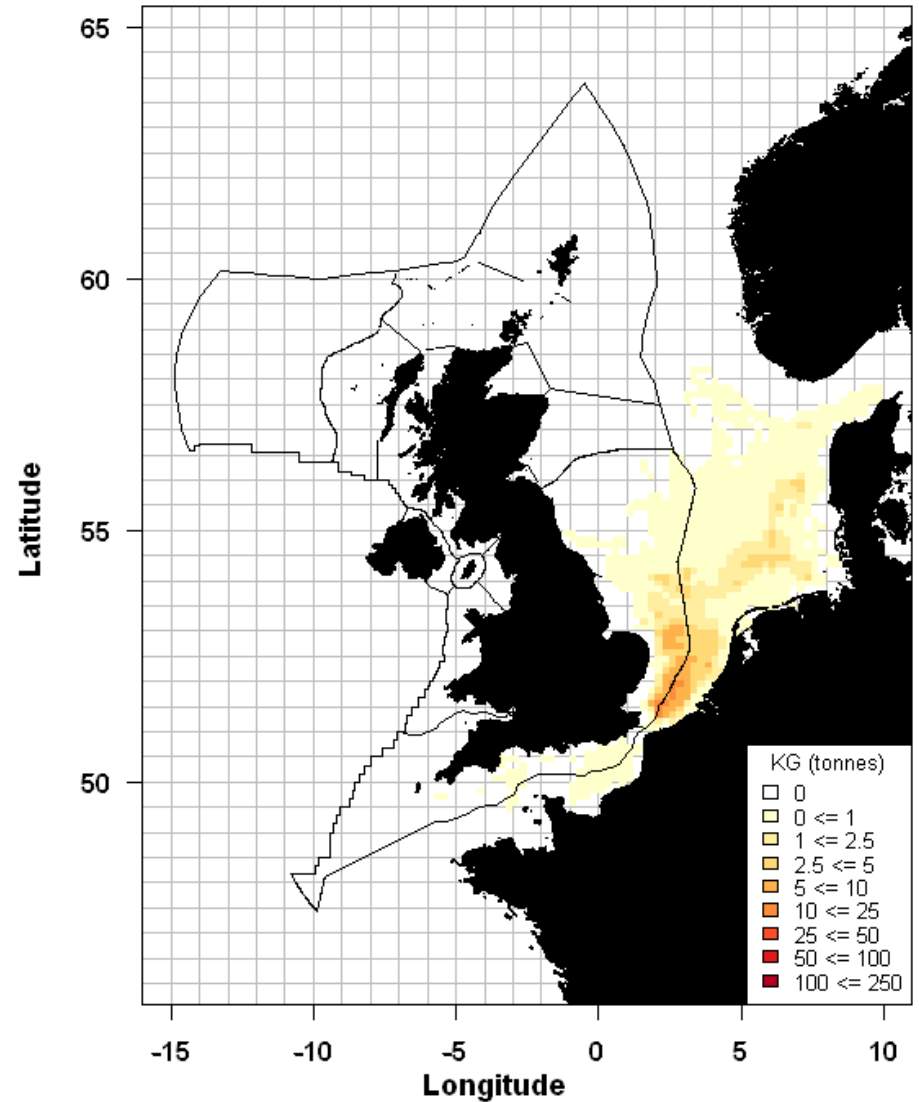


Species distribution by period

BLL 0610

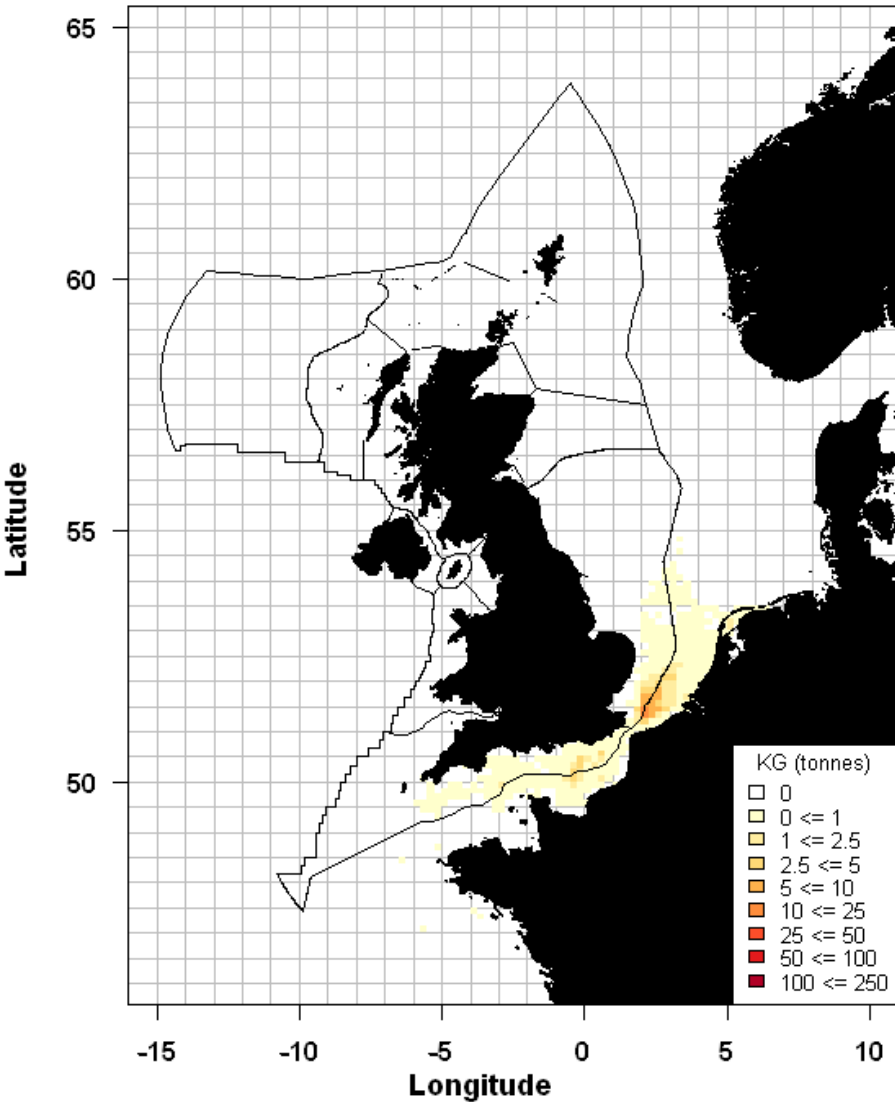


BLL 1115

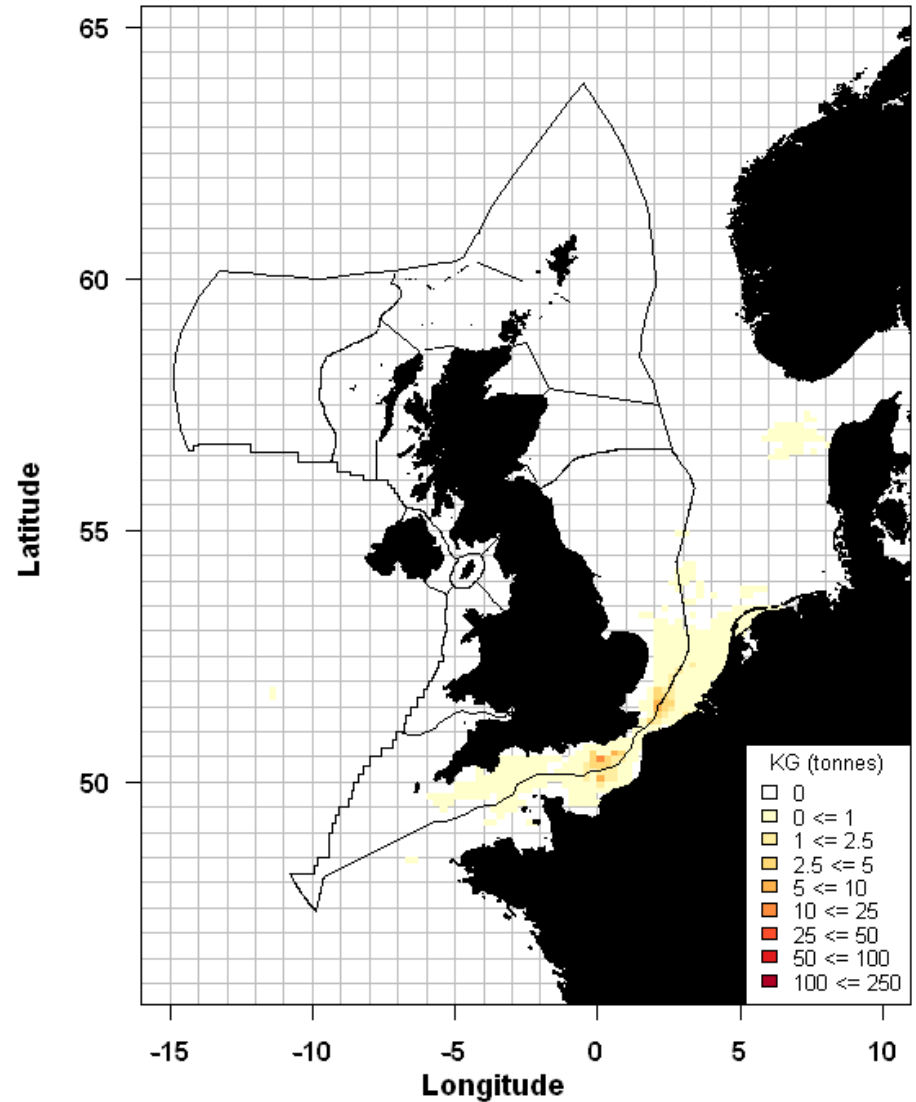


Species distribution by period

BSS 0610

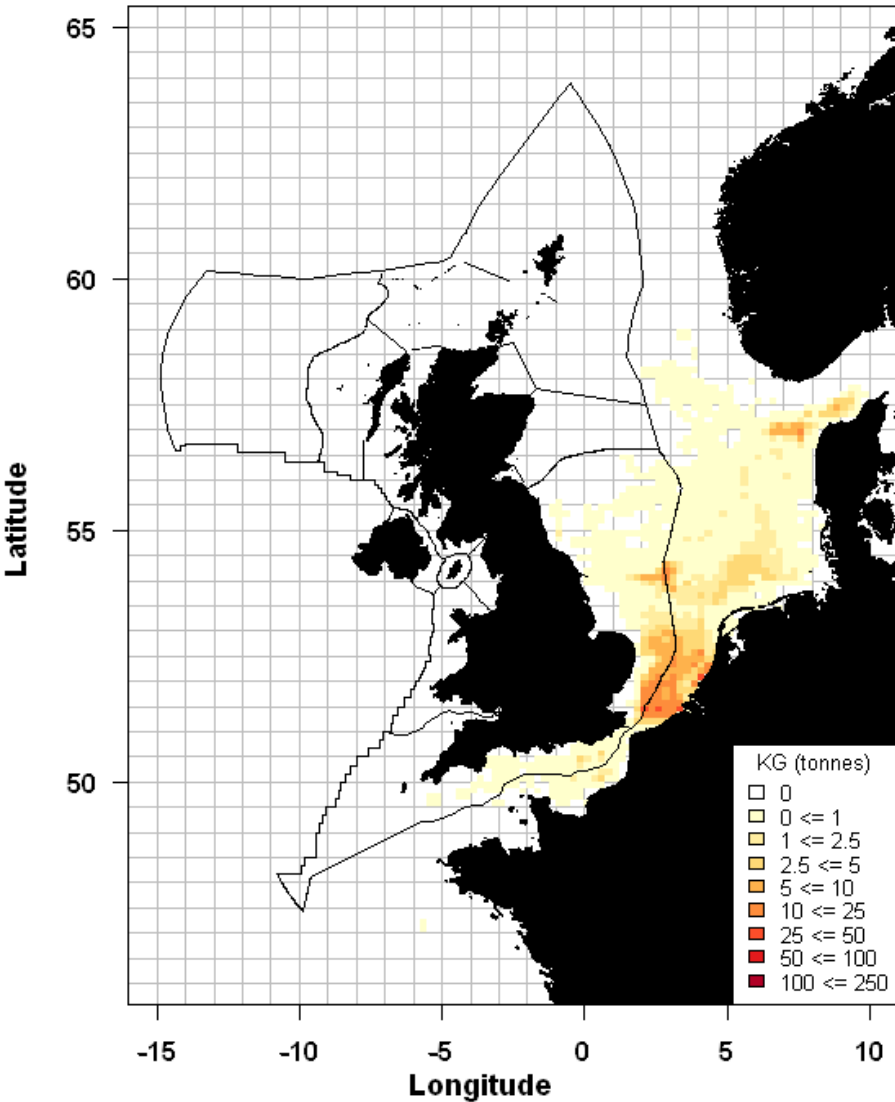


BSS 1115

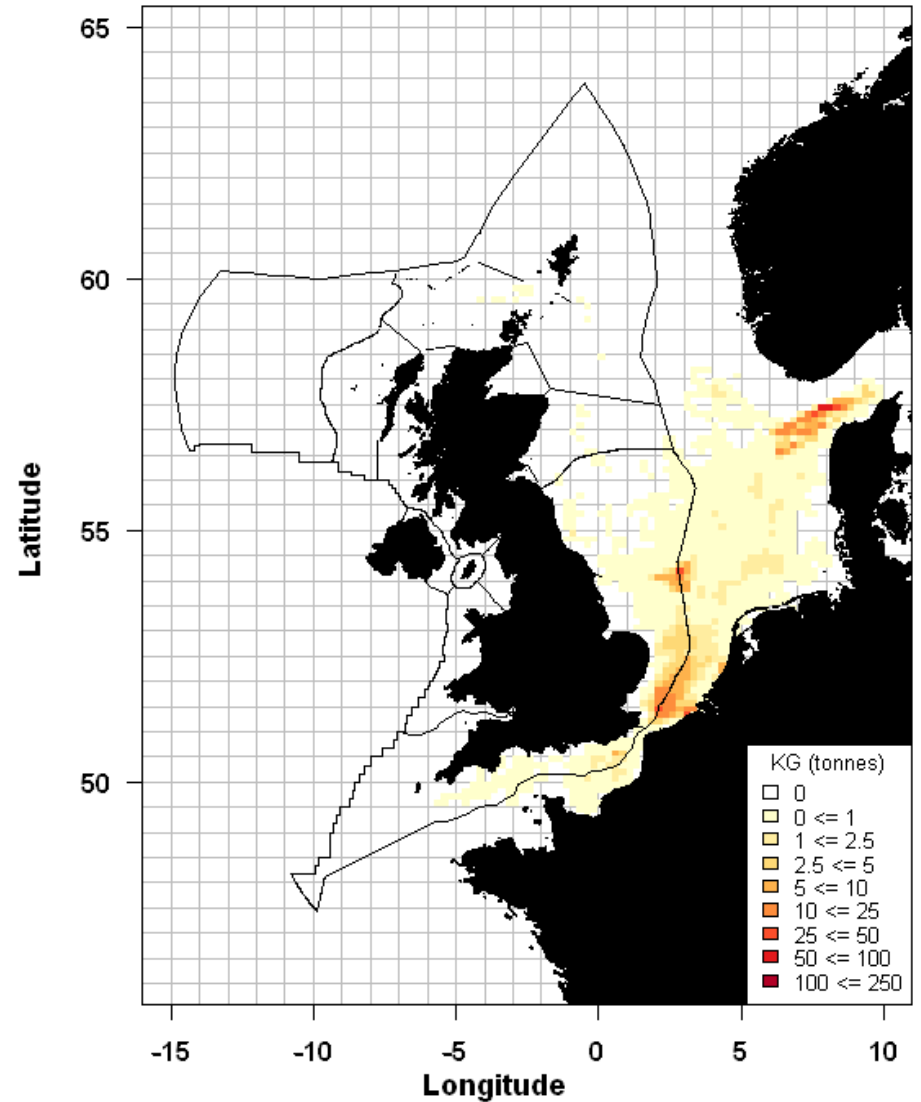


Species distribution by period

COD 0610

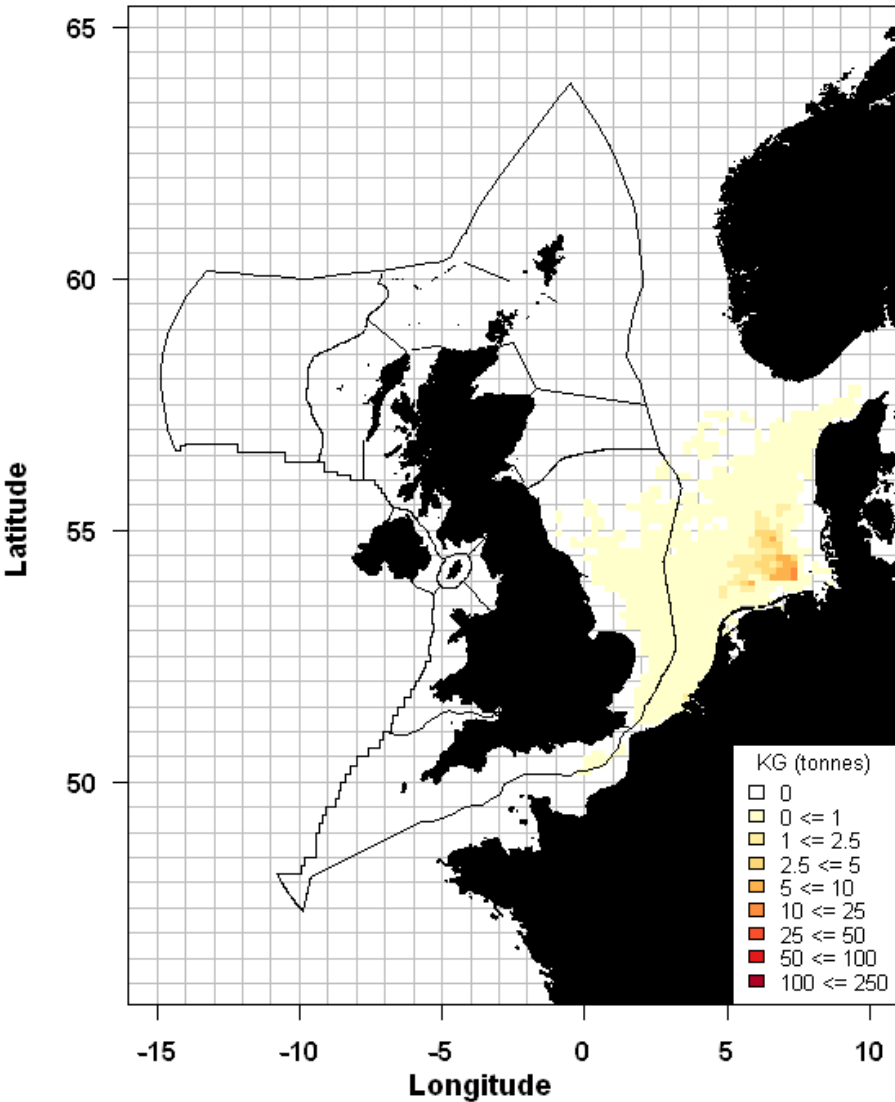


COD 1115

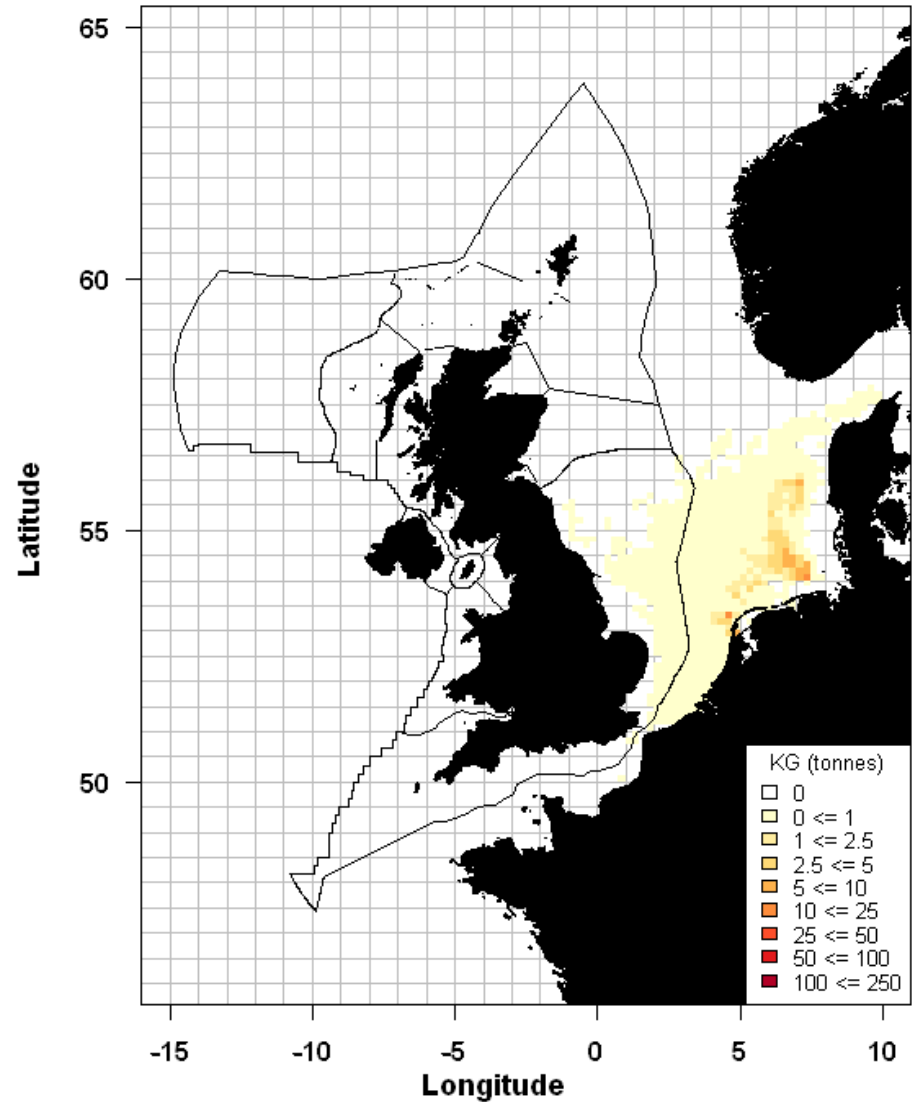


Species distribution by period

CRE 0610

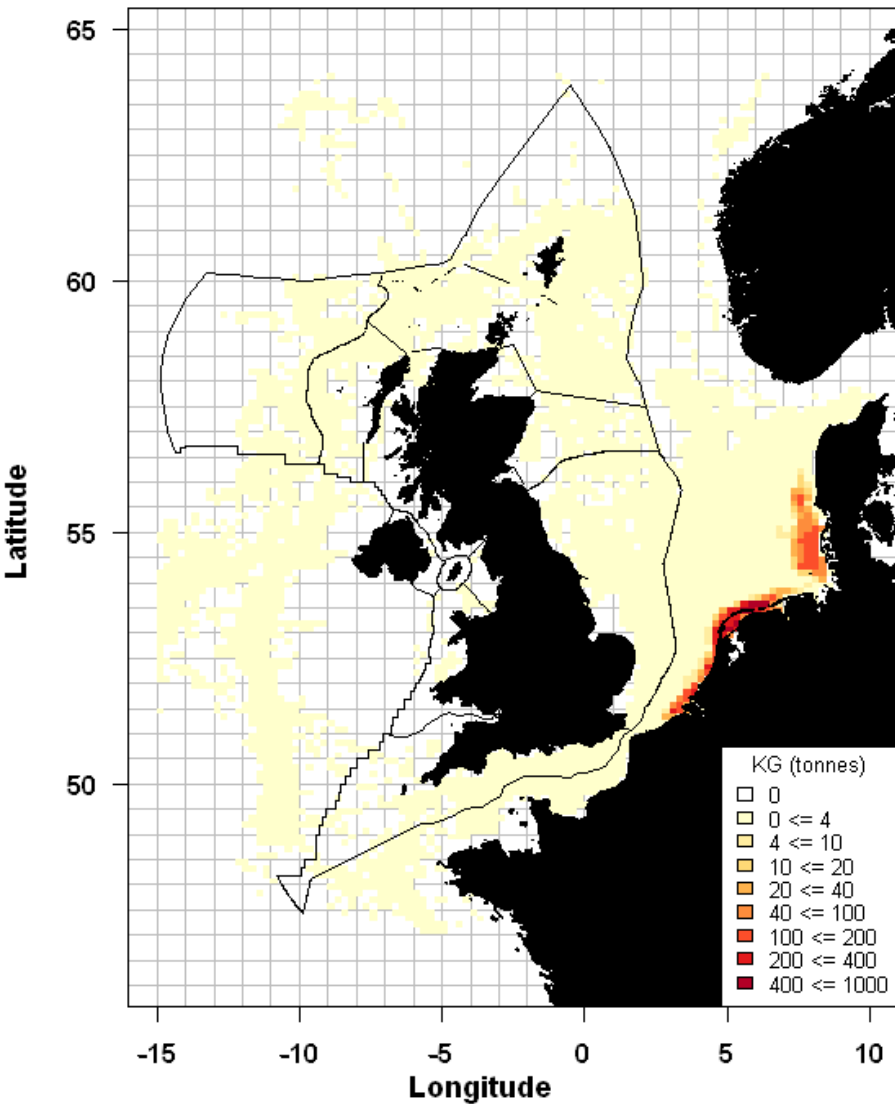


CRE 1115

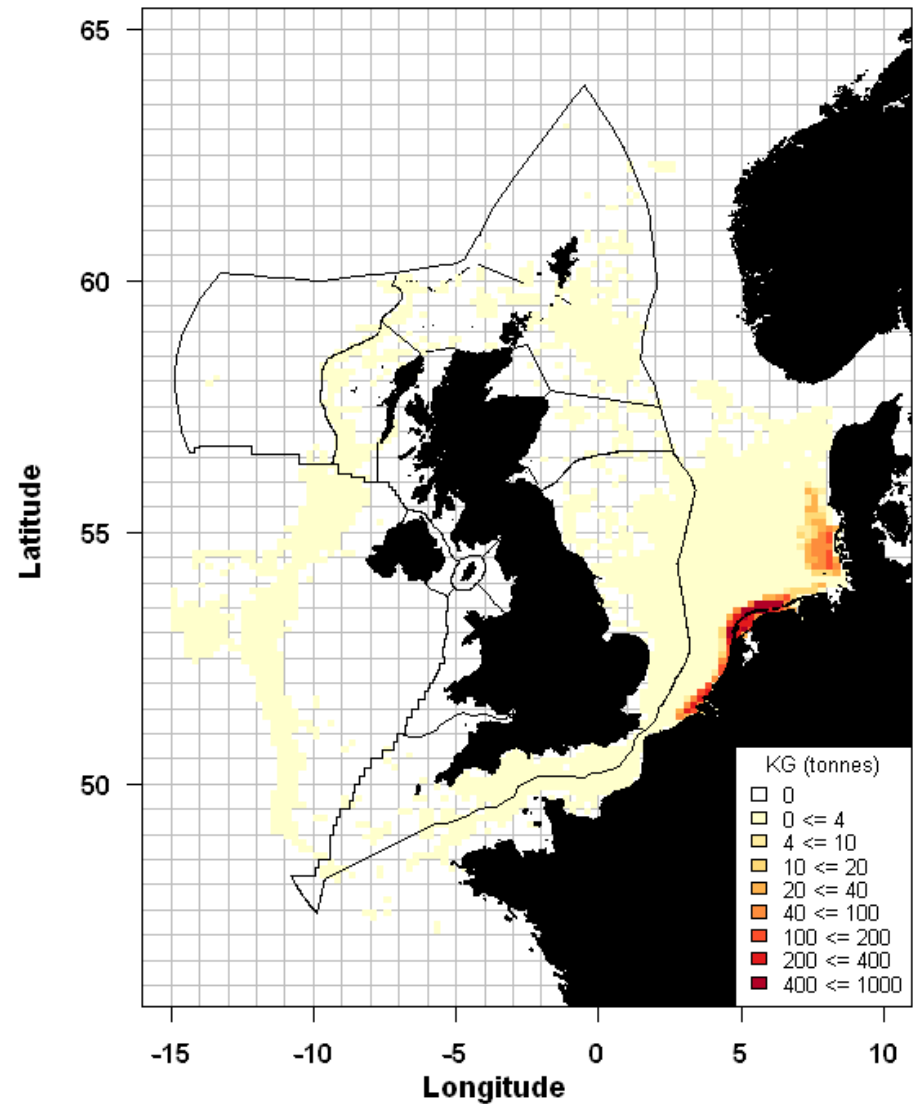


Species distribution by period

CSH 0610

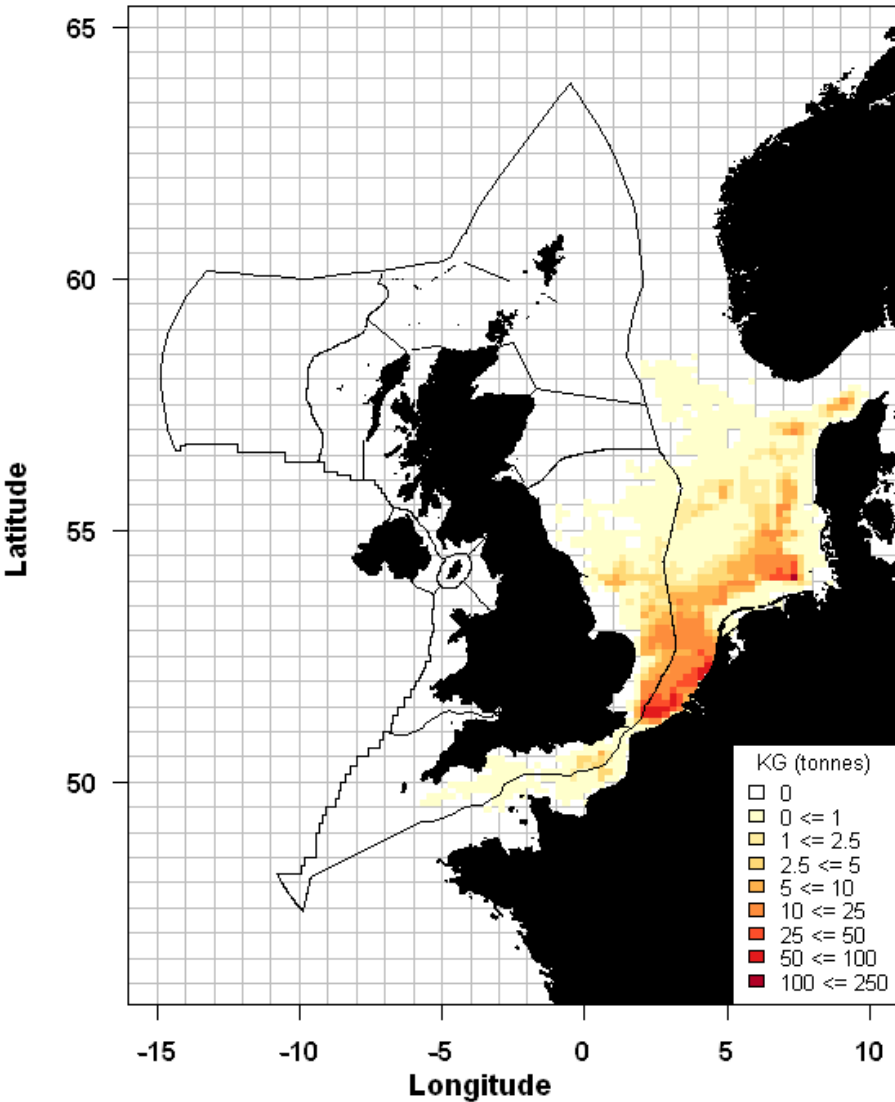


CSH 1115

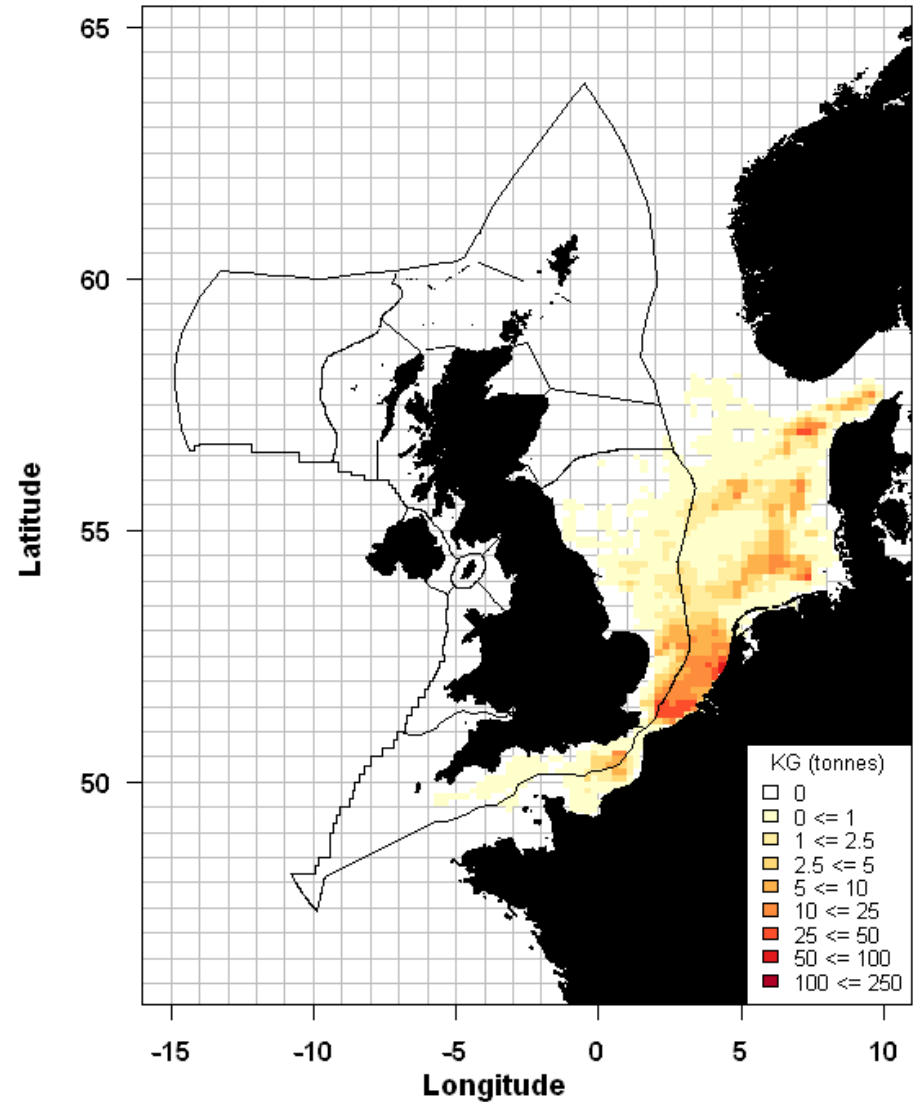


Species distribution by period

DAB 0610

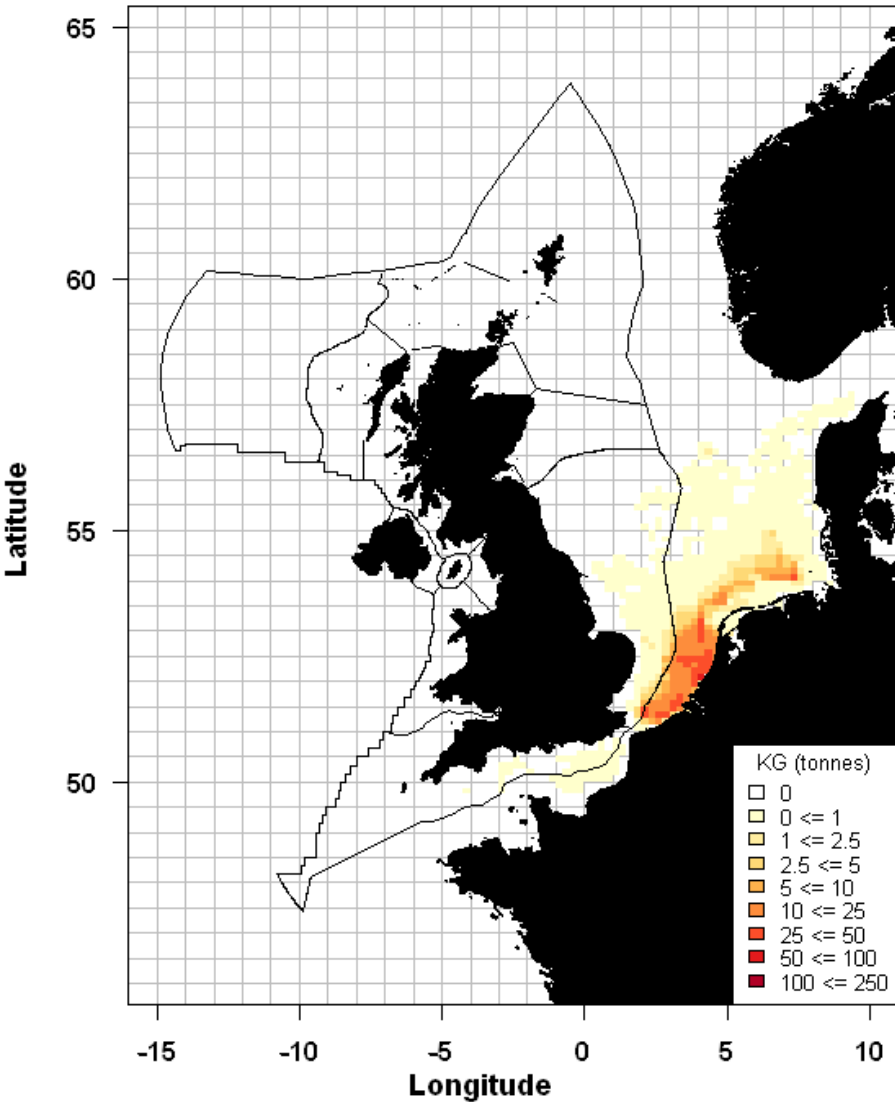


DAB 1115

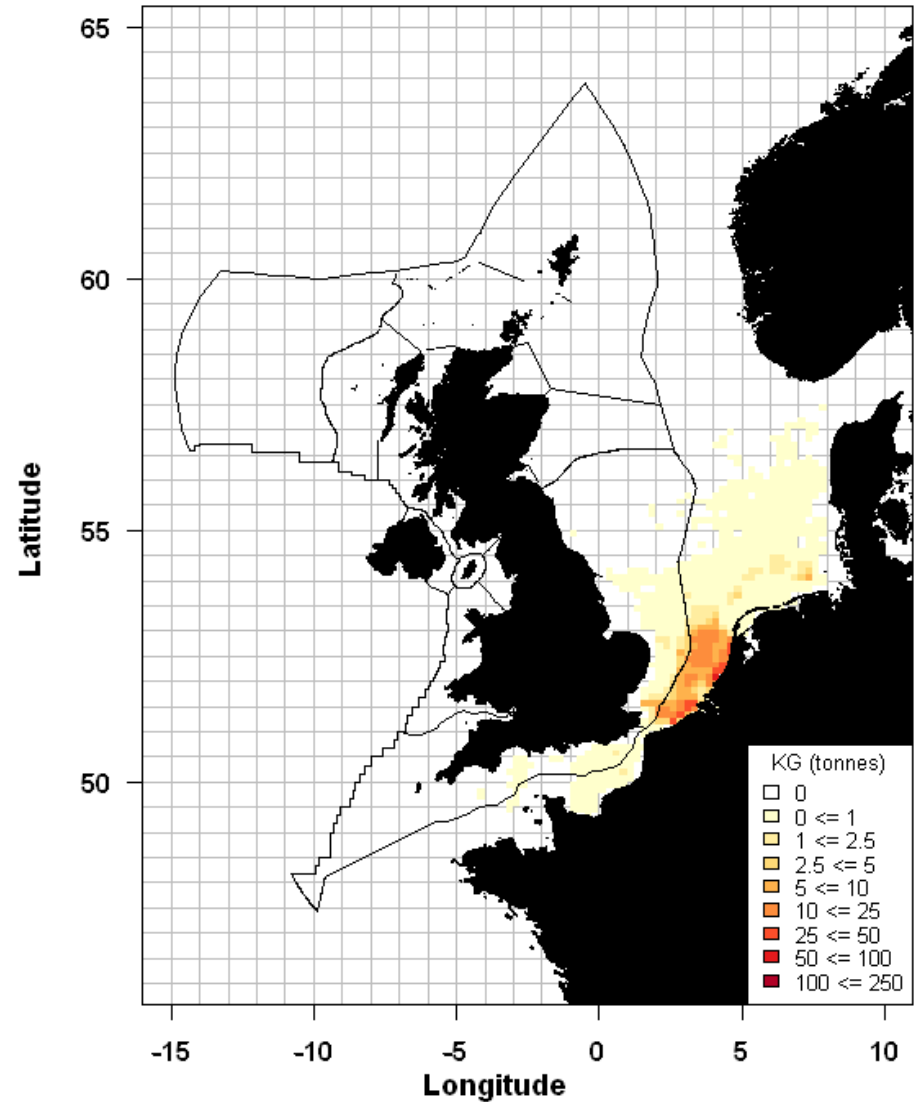


Species distribution by period

FLE 0610

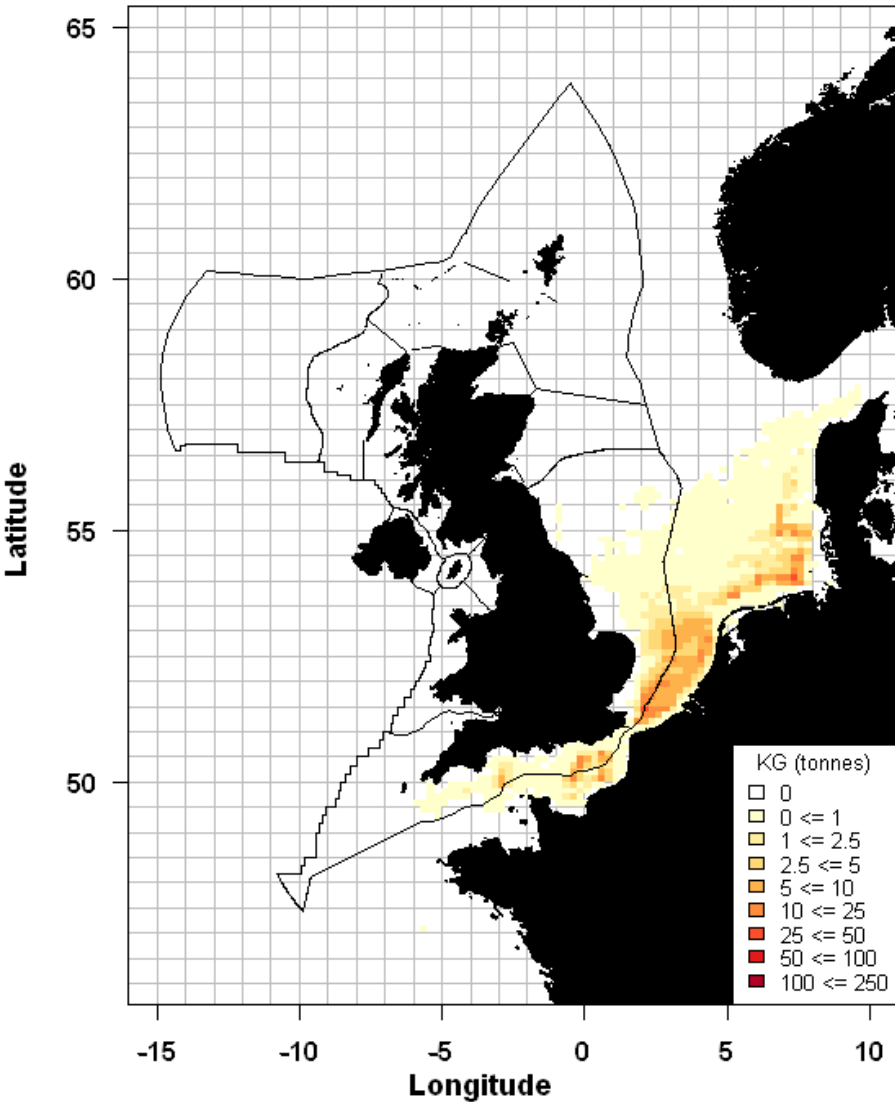


FLE 1115

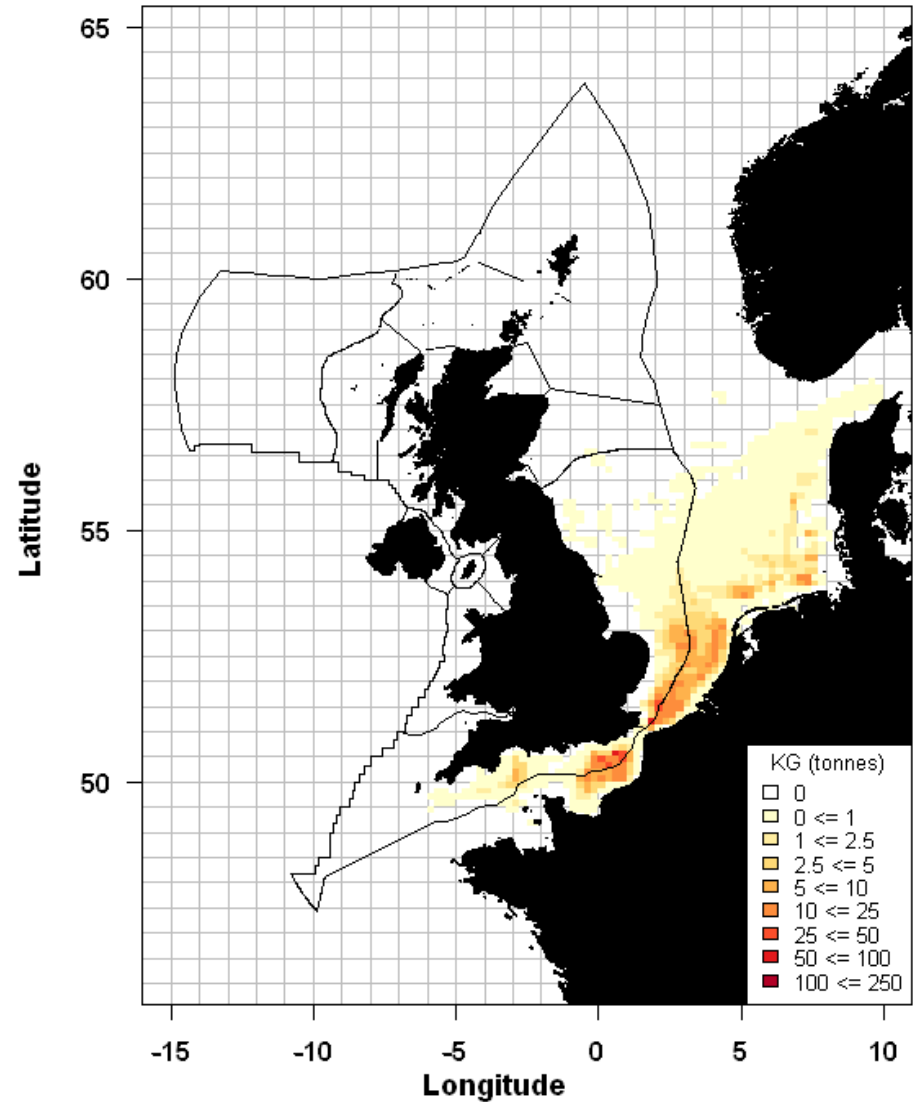


Species distribution by period

GUU 0610

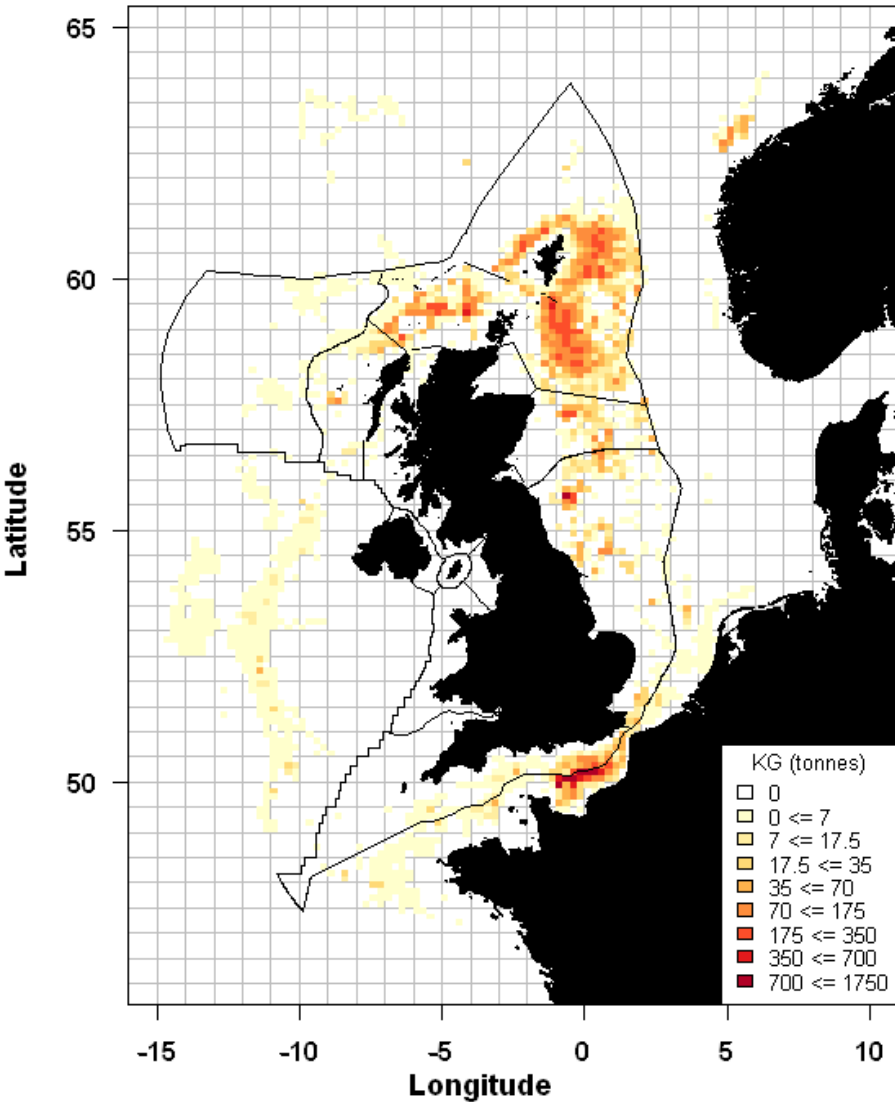


GUU 1115

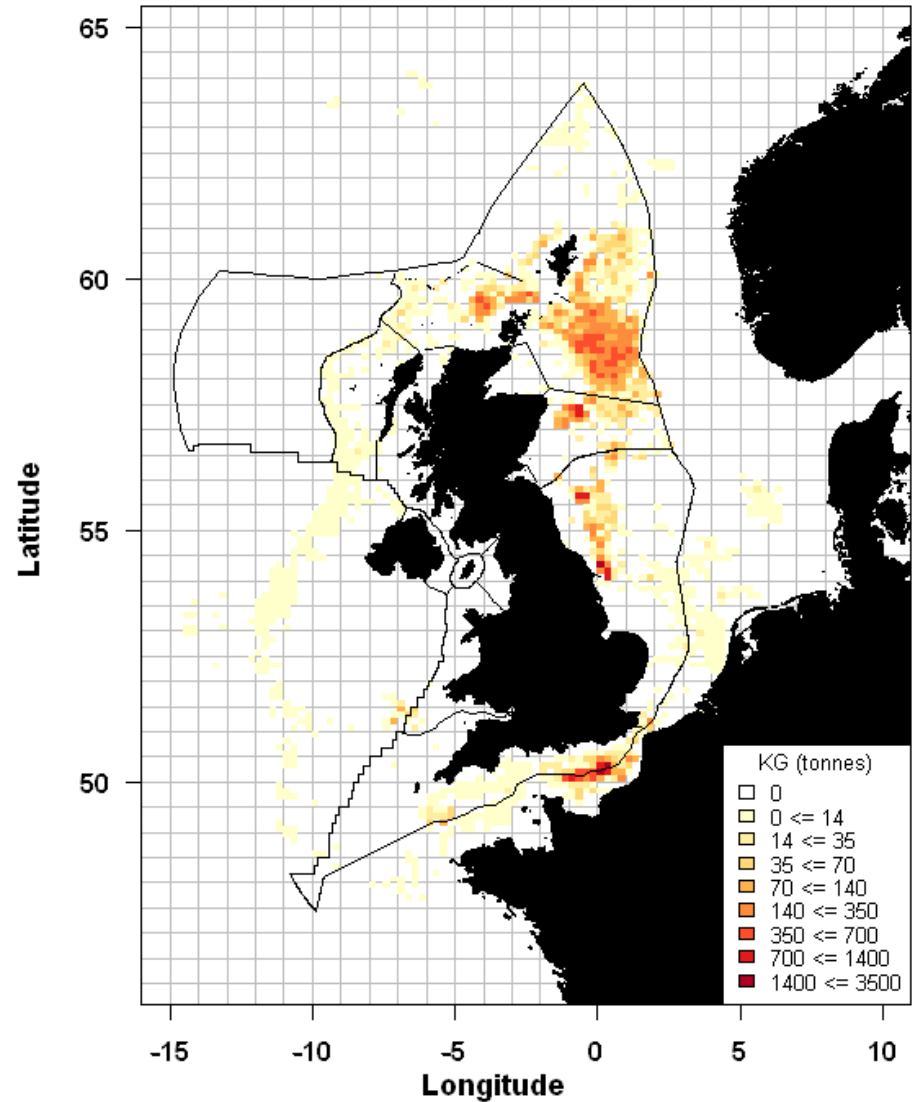


Species distribution by period

HER 0610

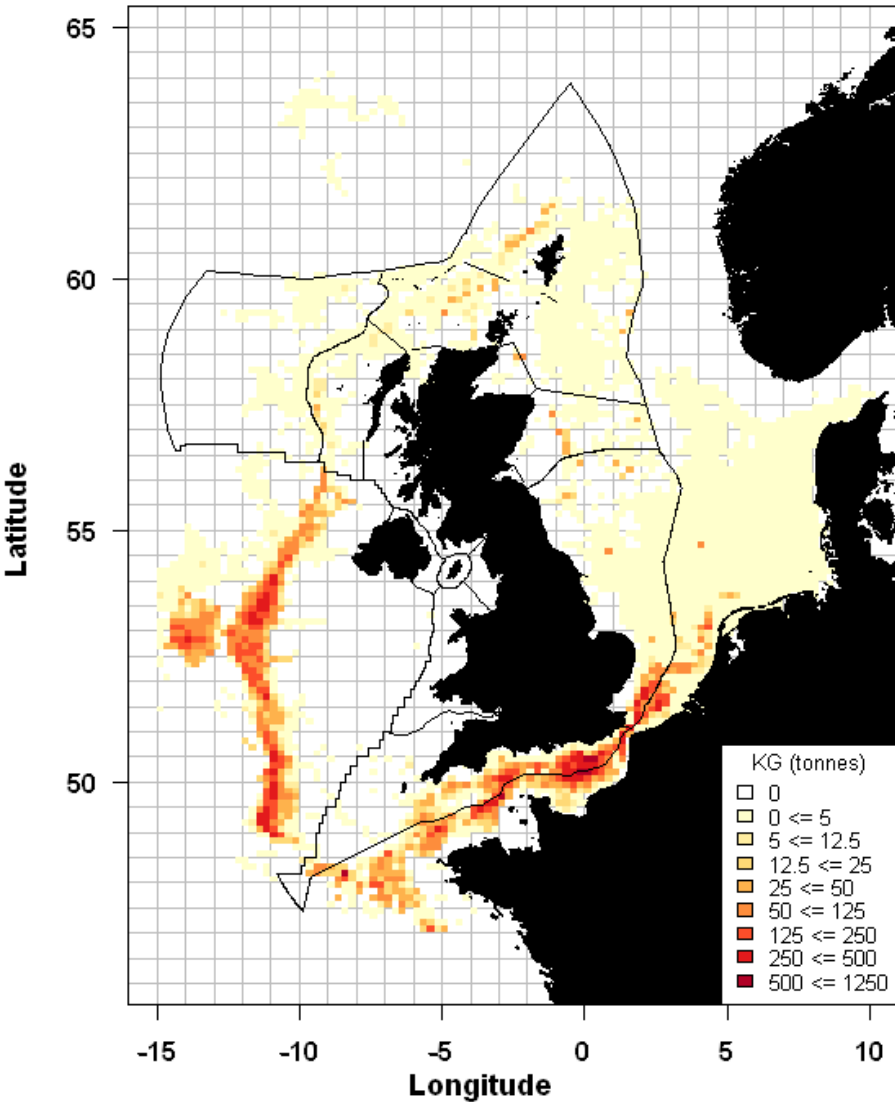


HER 1115

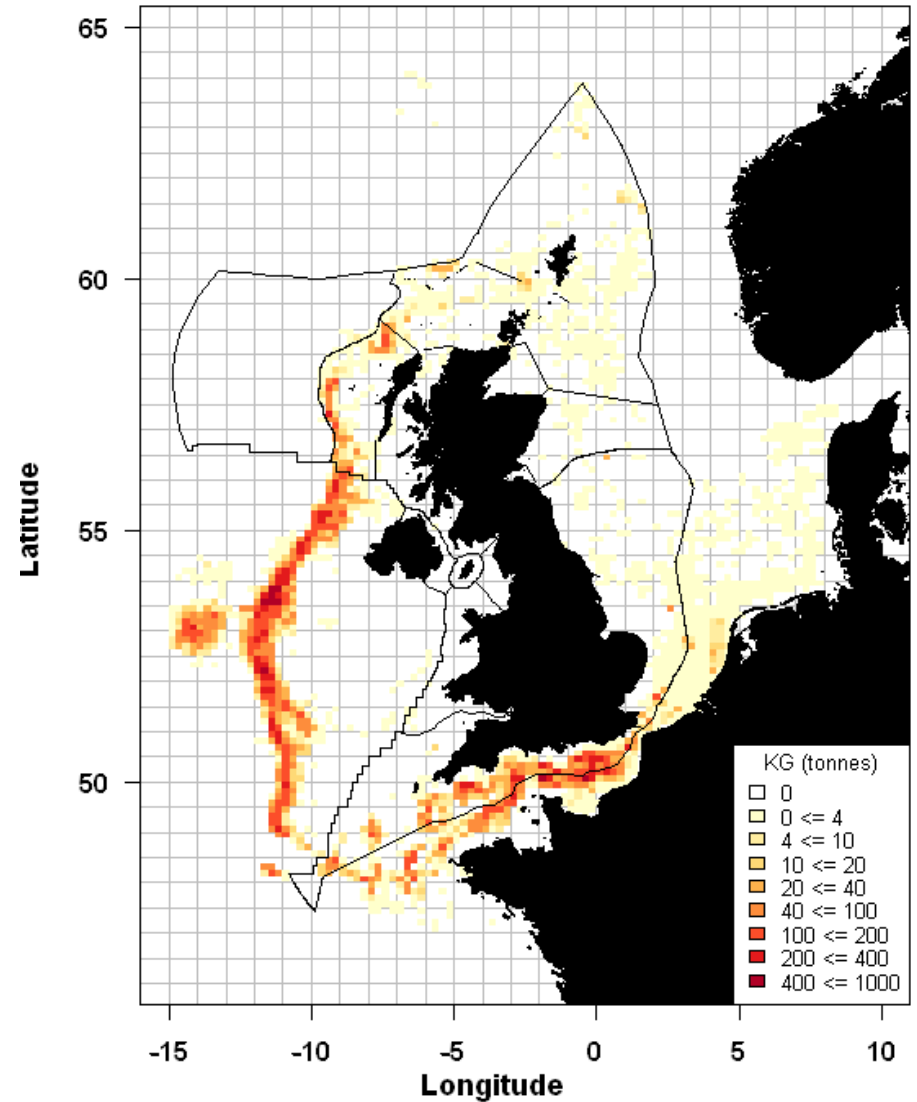


Species distribution by period

JAX 0610

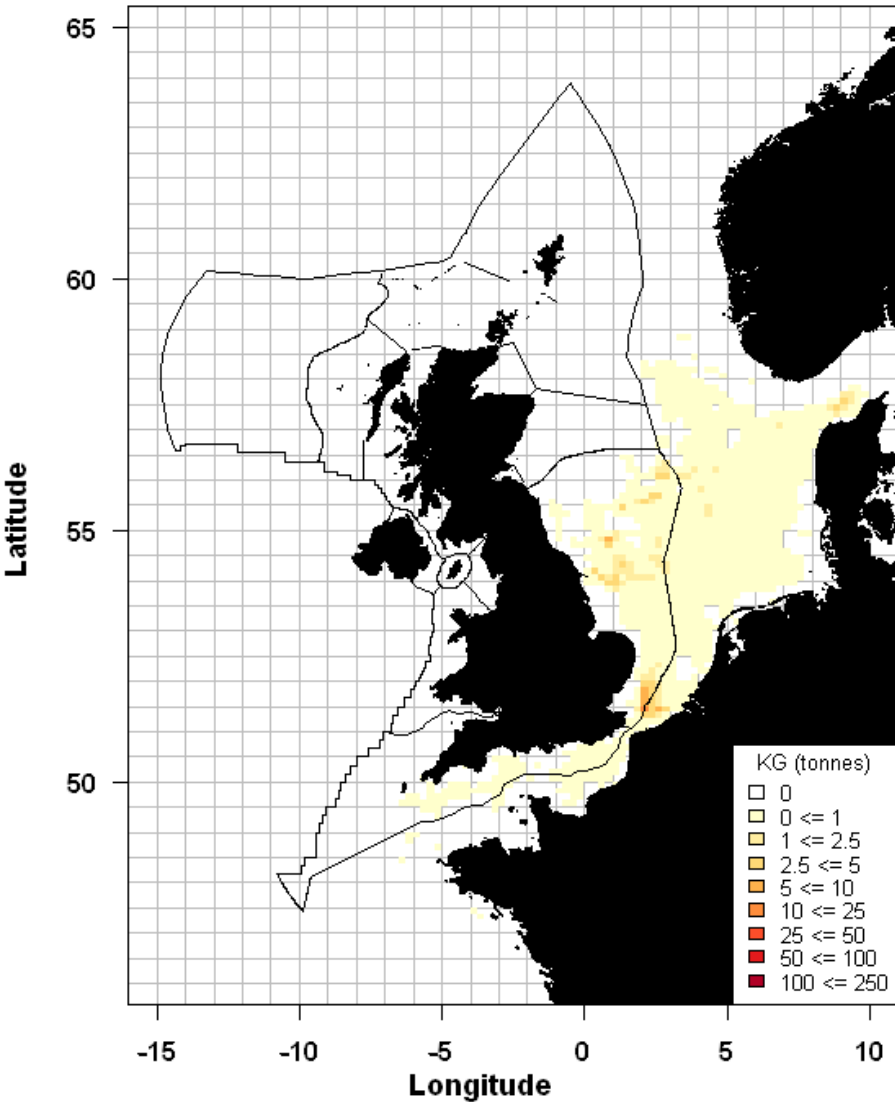


JAX 1115

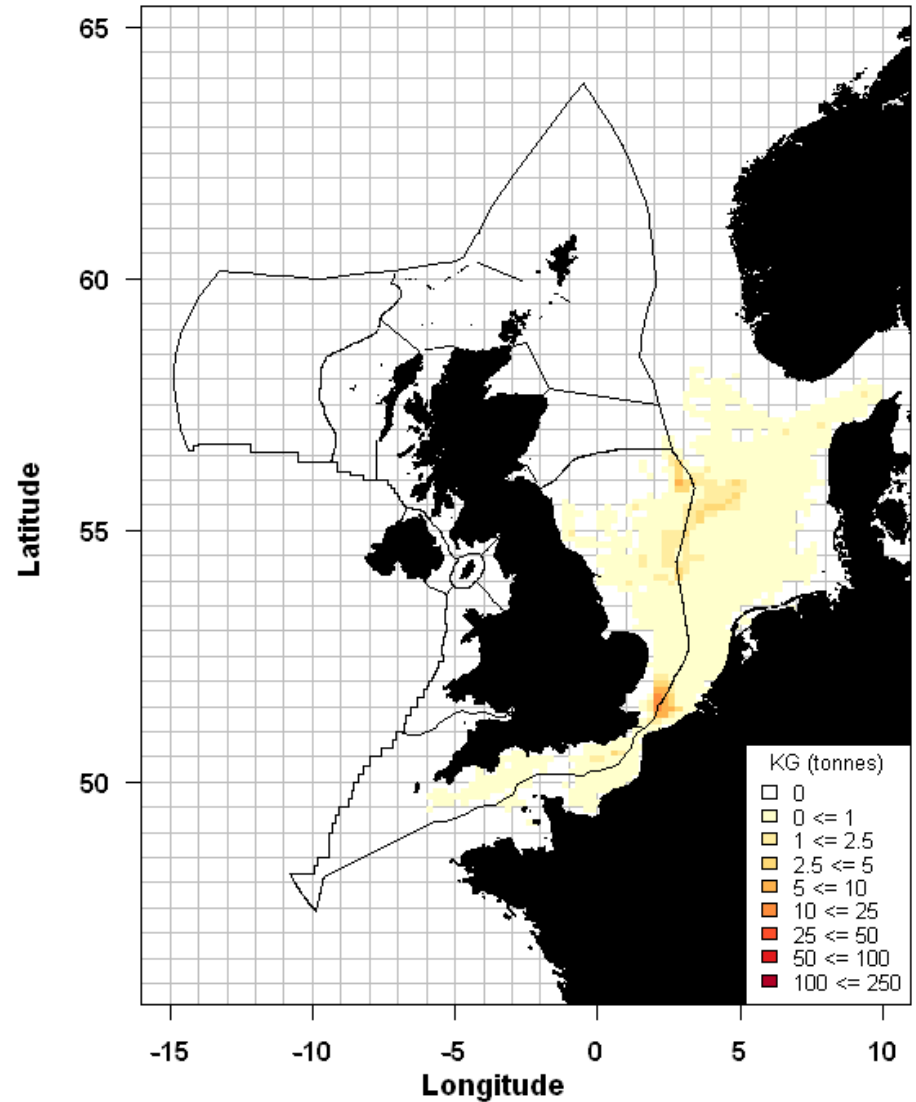


Species distribution by period

LEM 0610

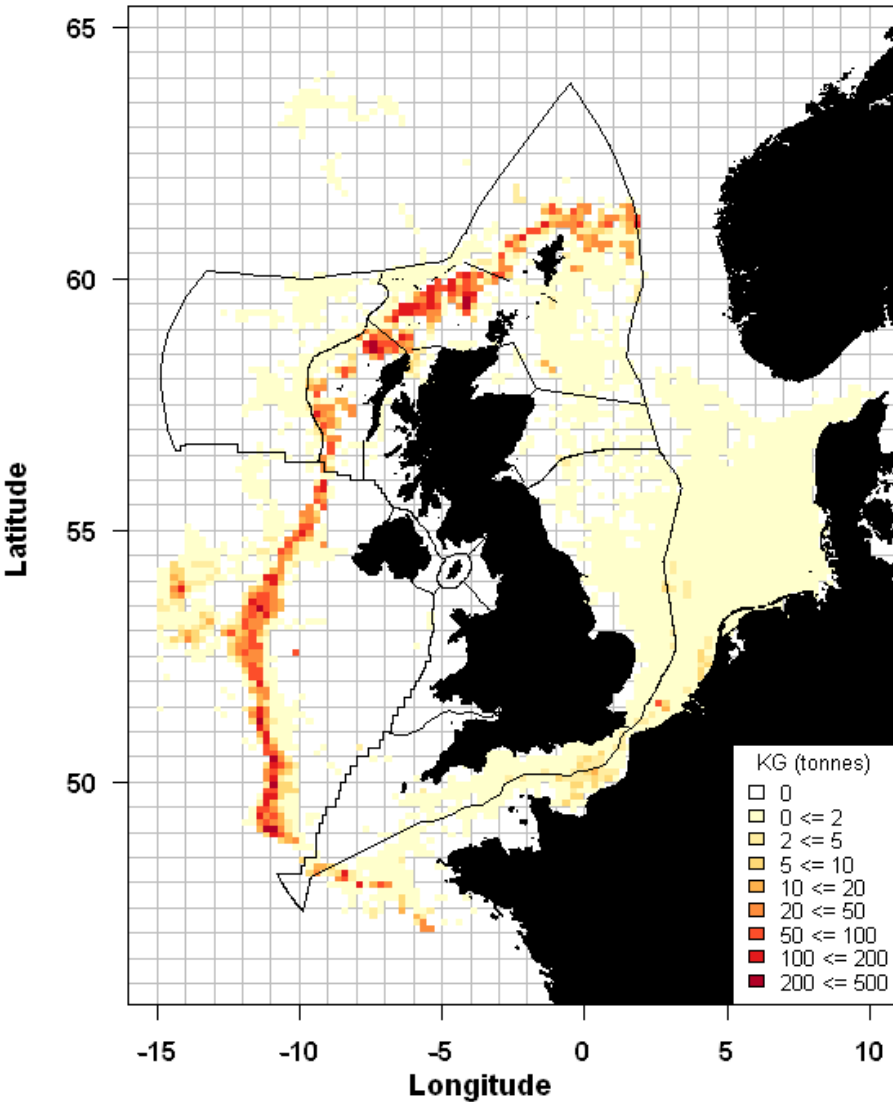


LEM 1115

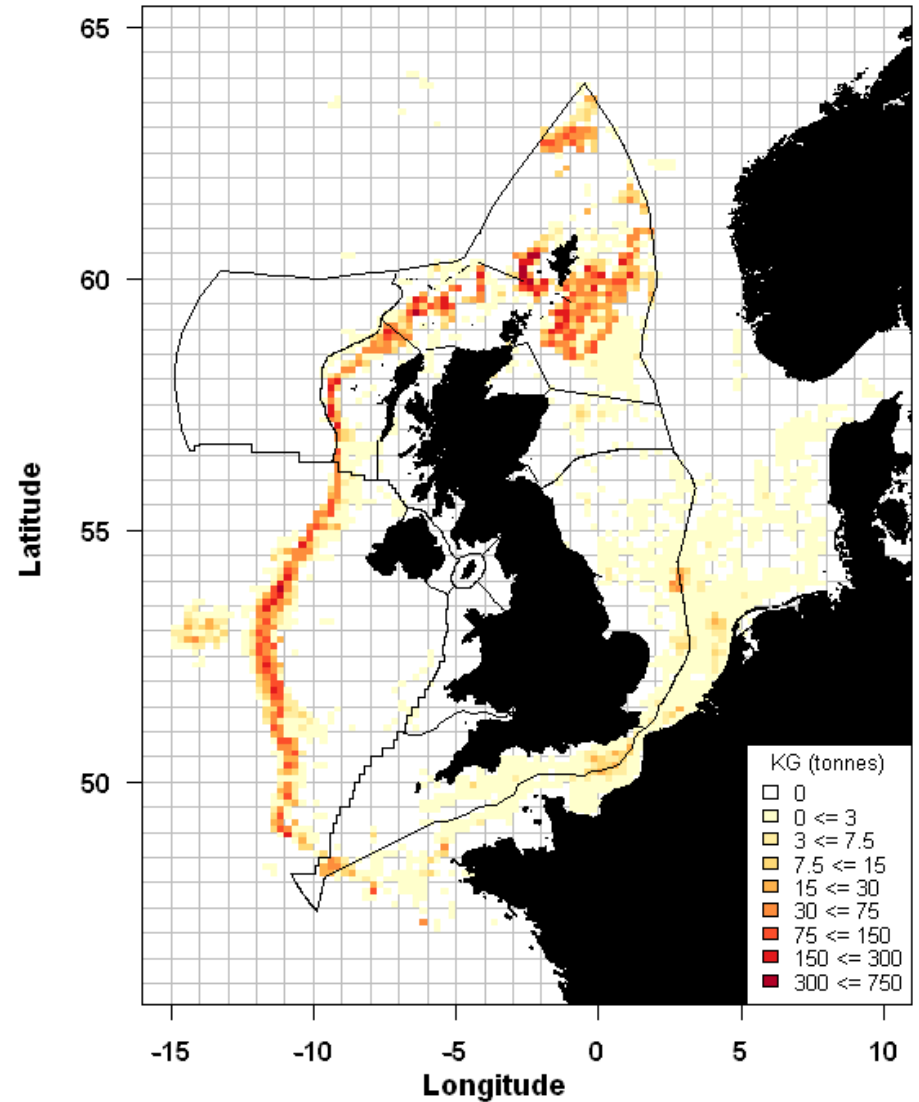


Species distribution by period

MAC 0610

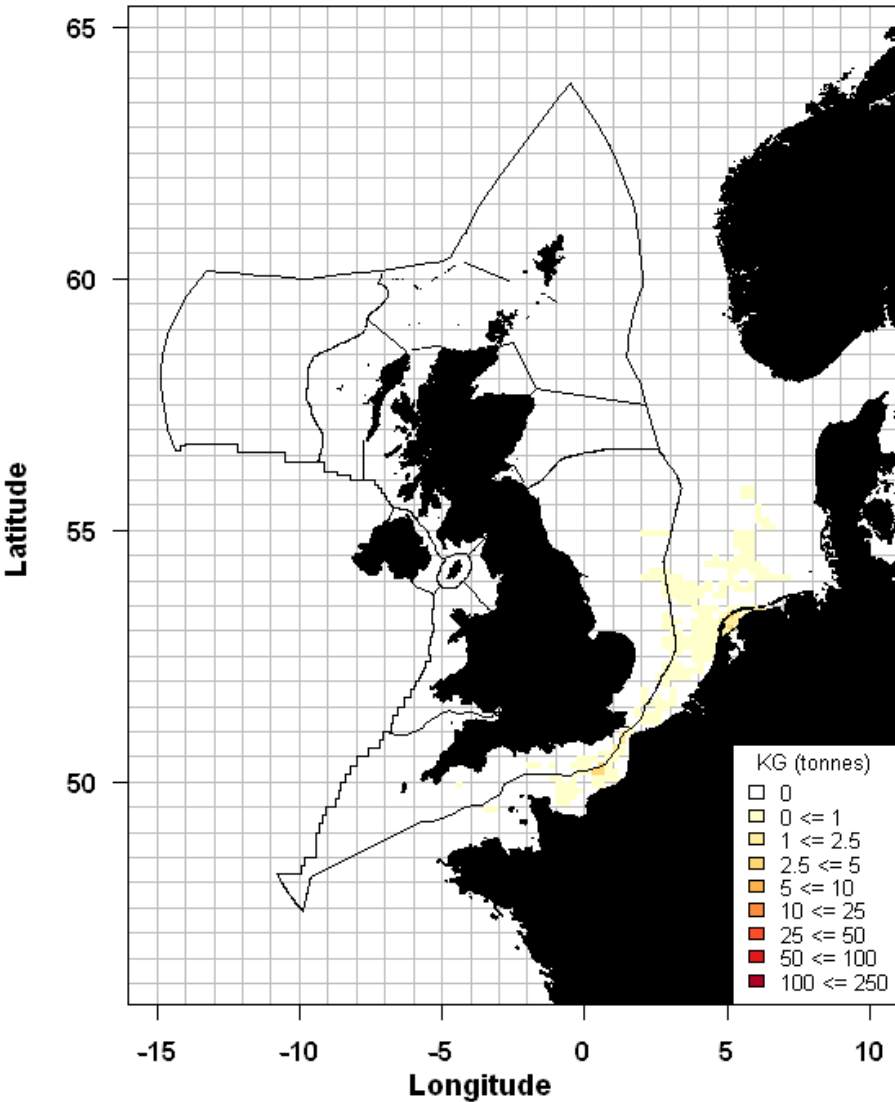


MAC 1115

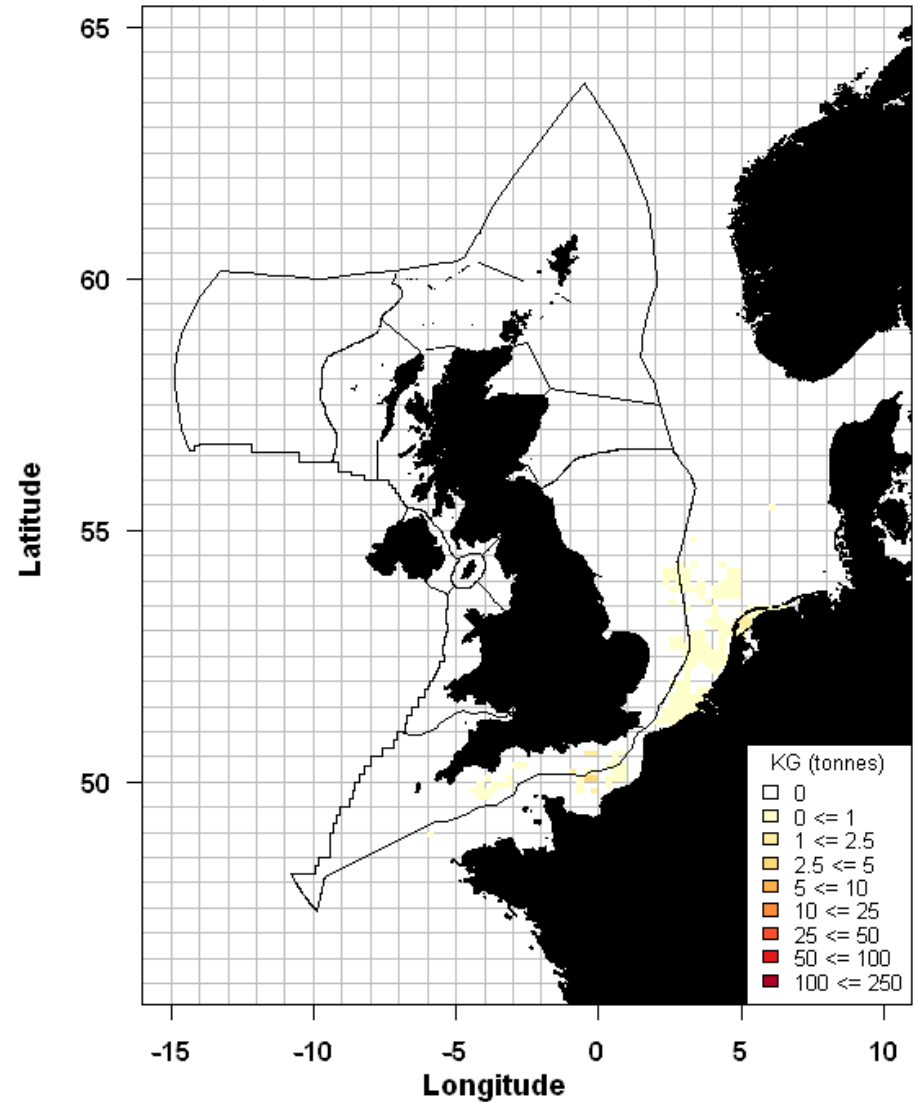


Species distribution by period

MUL 0610

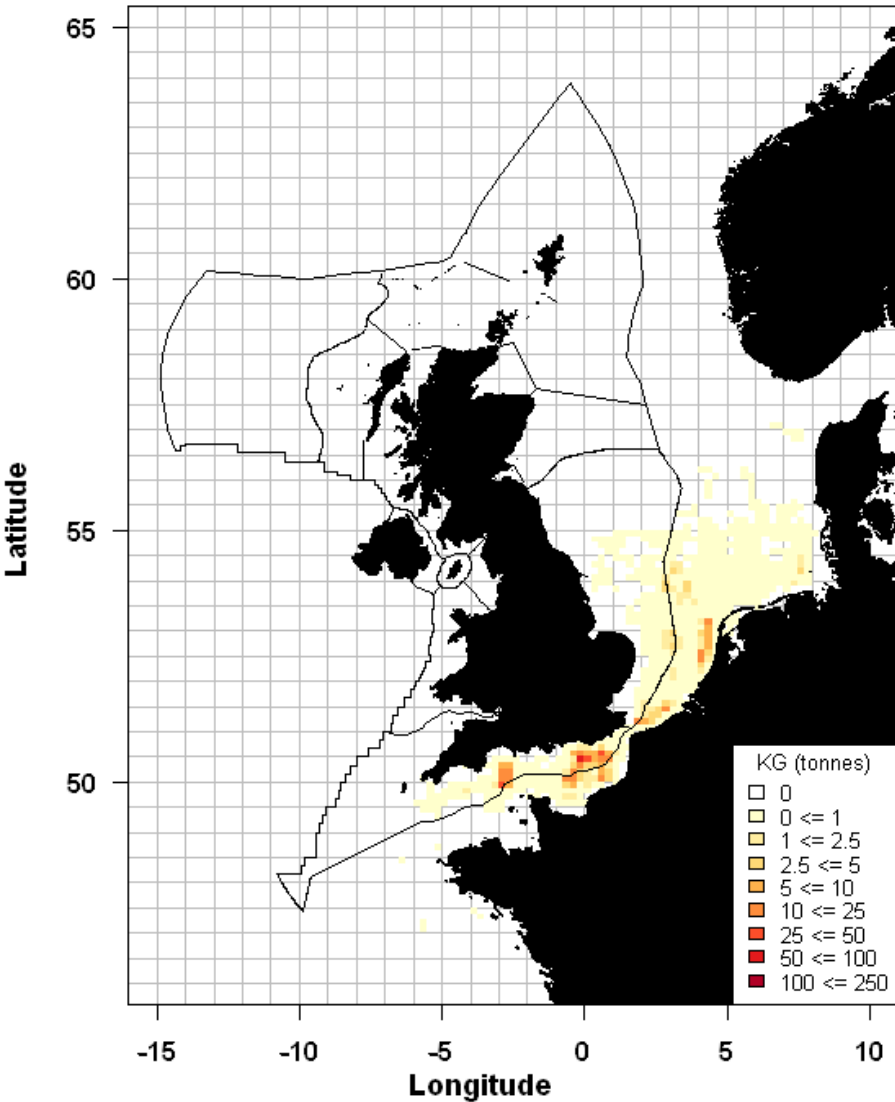


MUL 1115

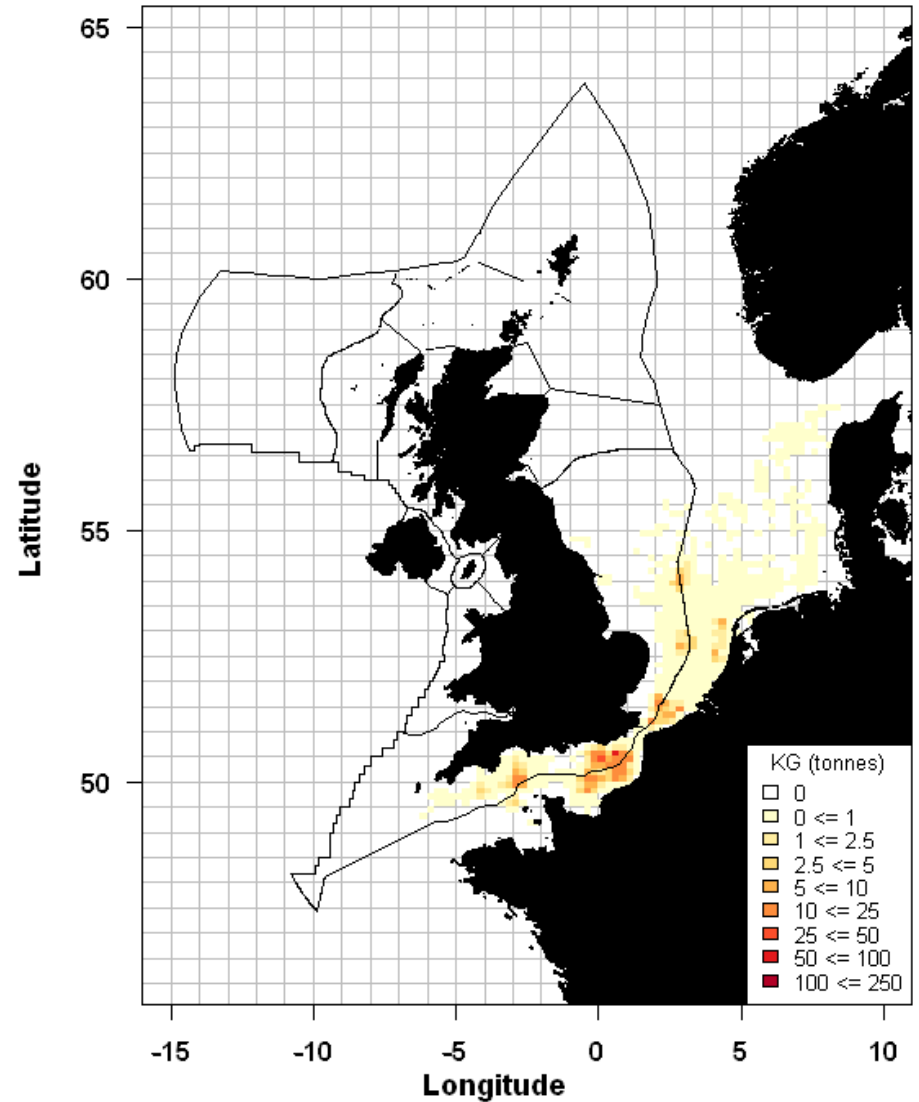


Species distribution by period

MUR 0610

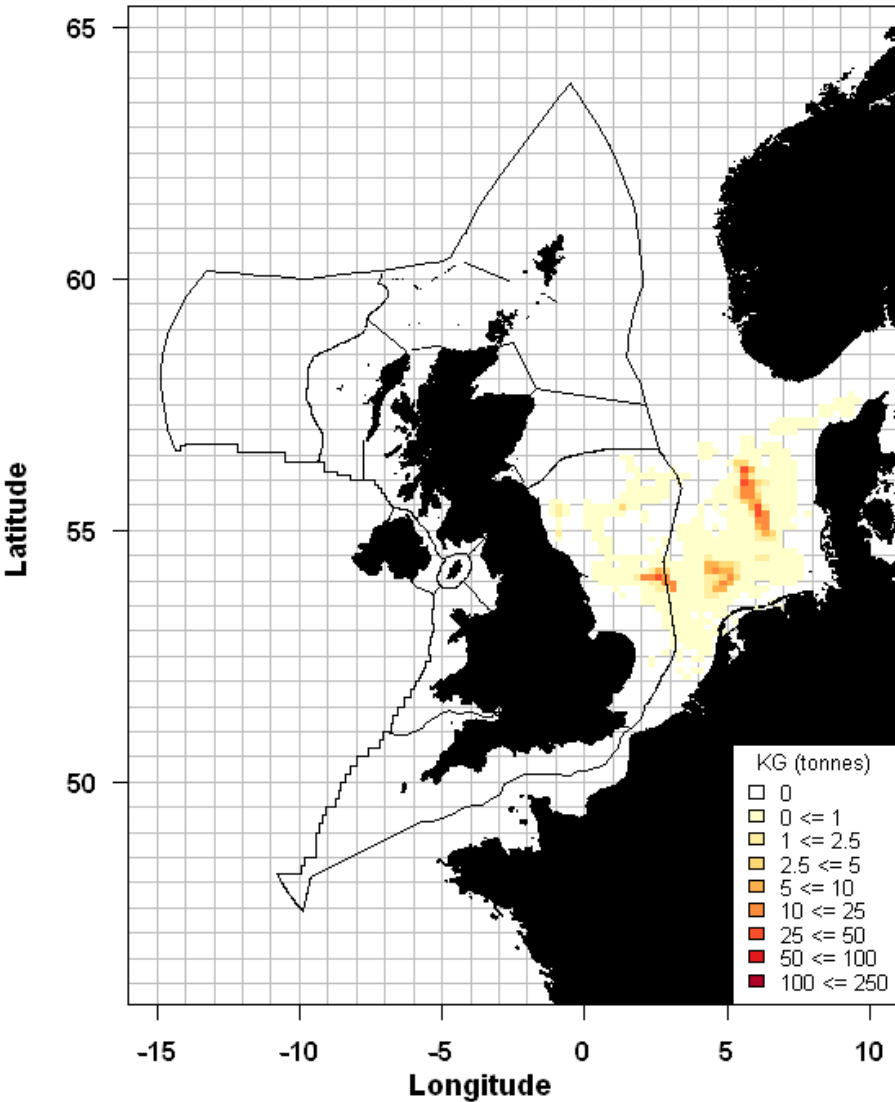


MUR 1115

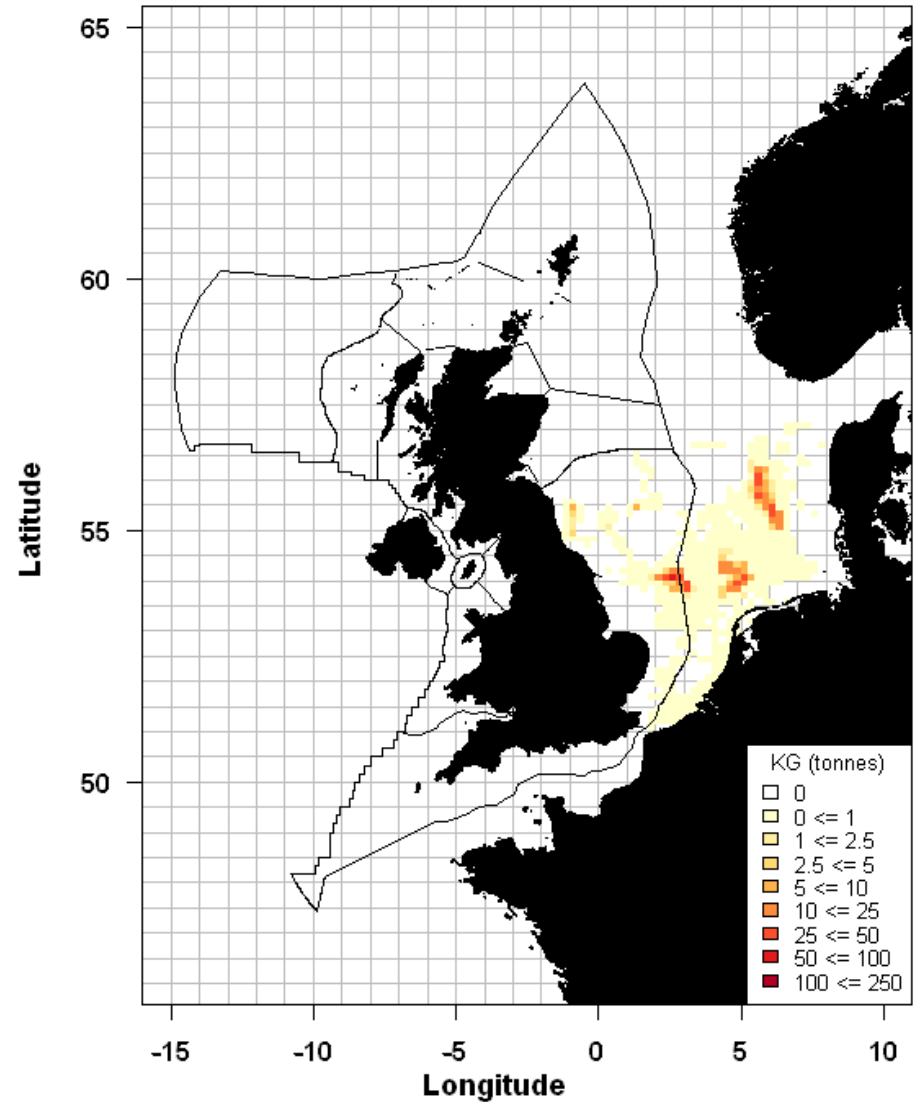


Species distribution by period

NEP 0610

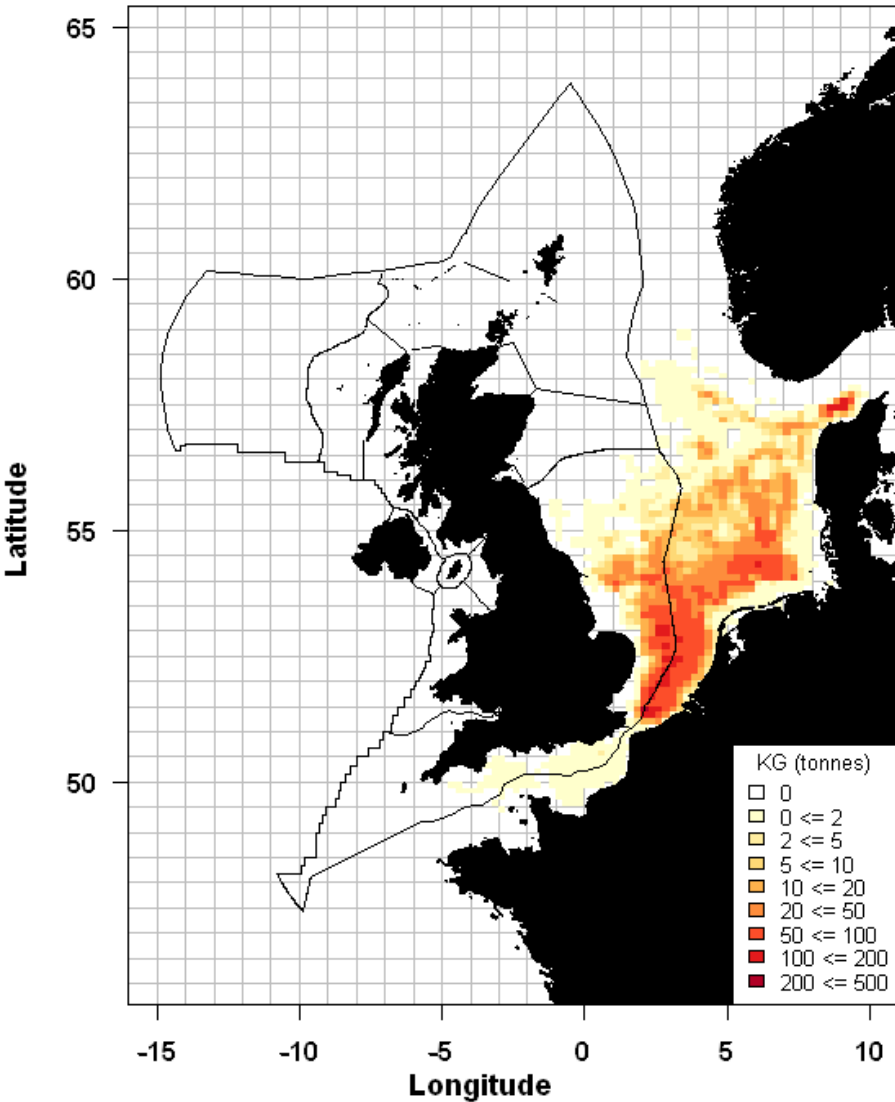


NEP 1115

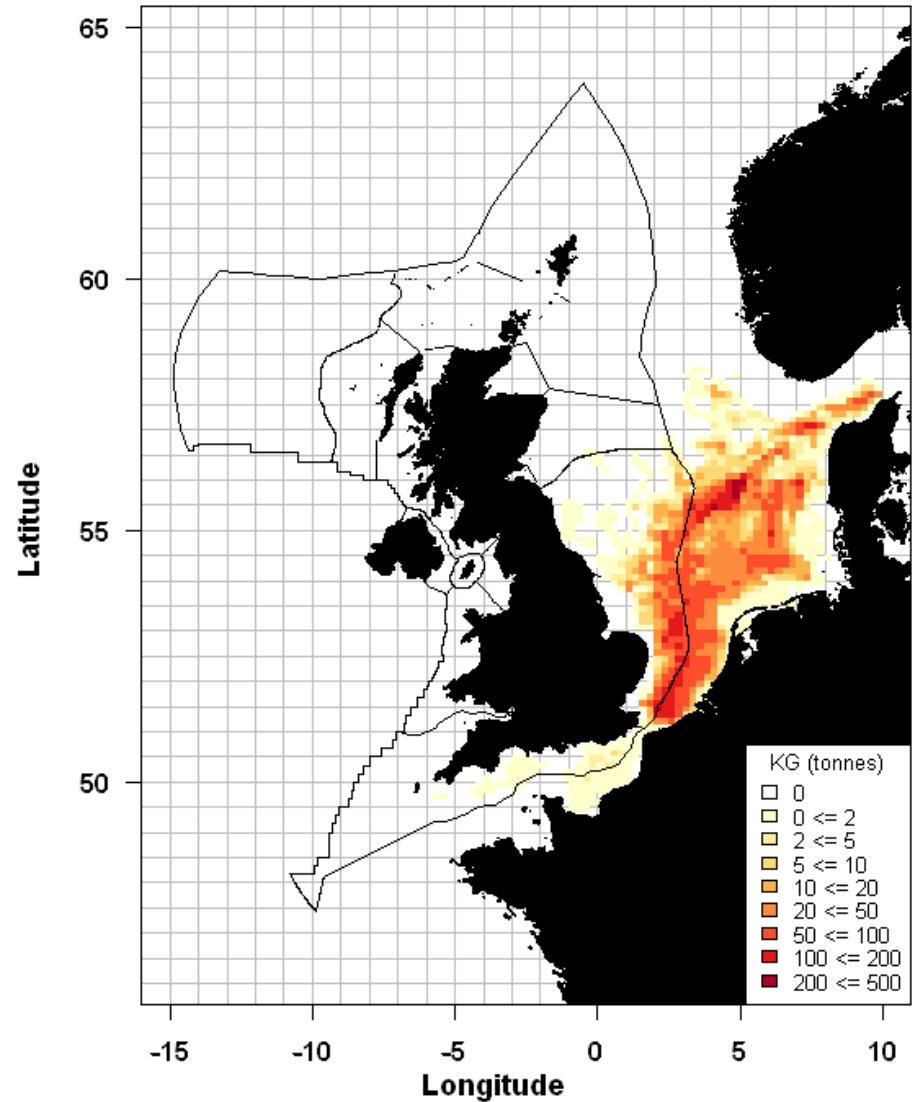


Species distribution by period

PLE 0610

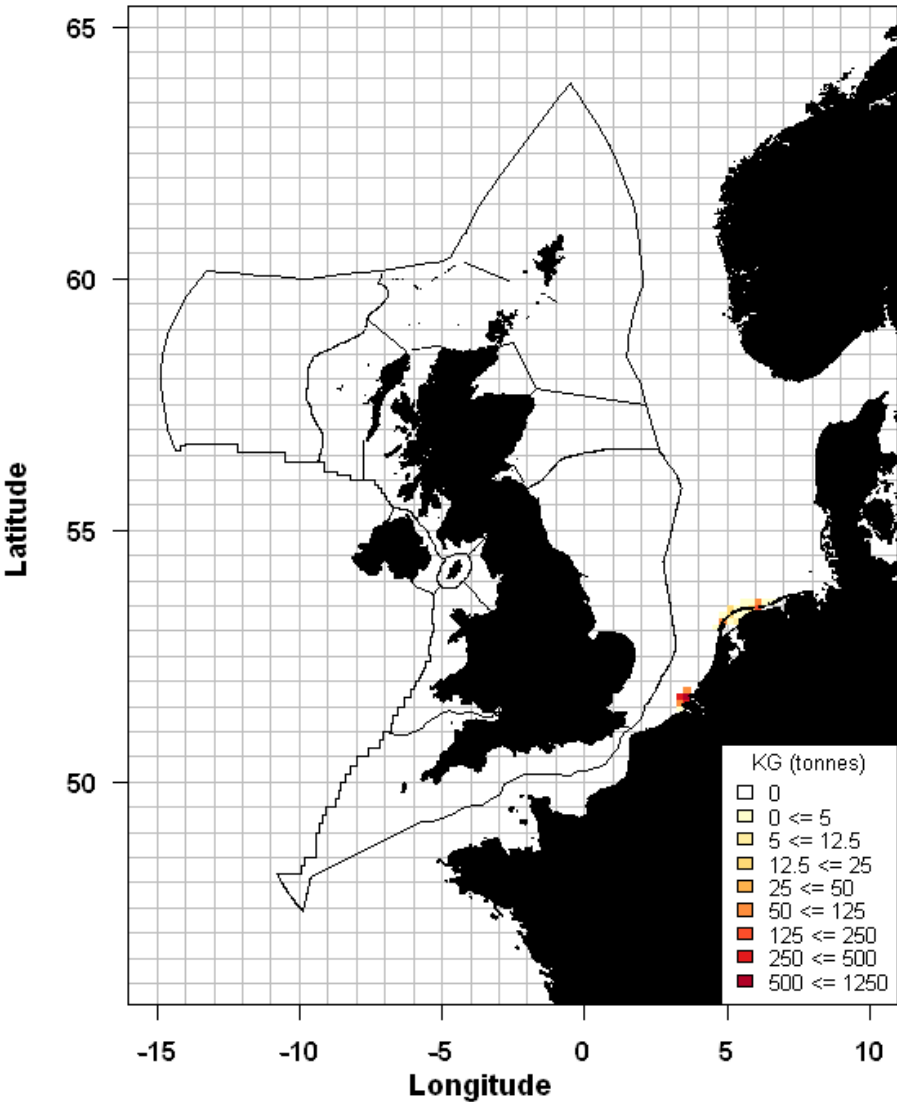


PLE 1115

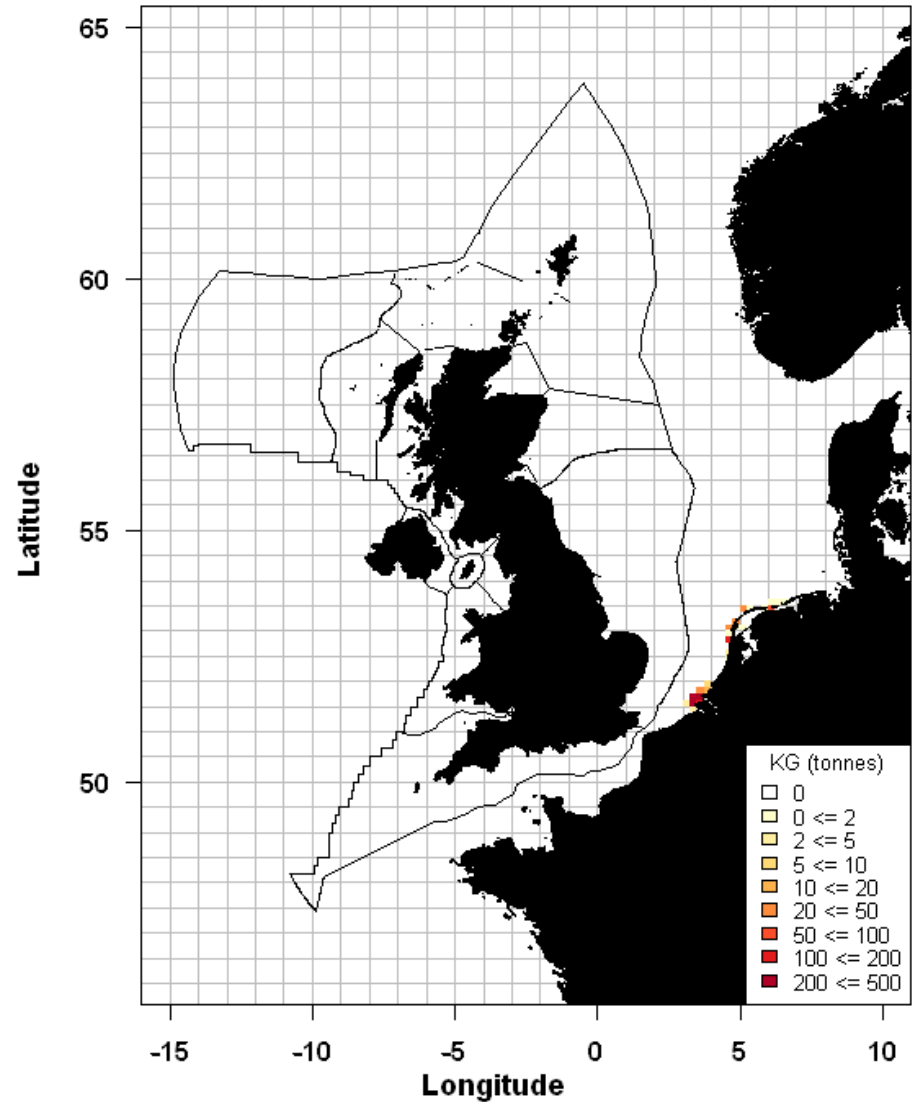


Species distribution by period

RAZ 0610

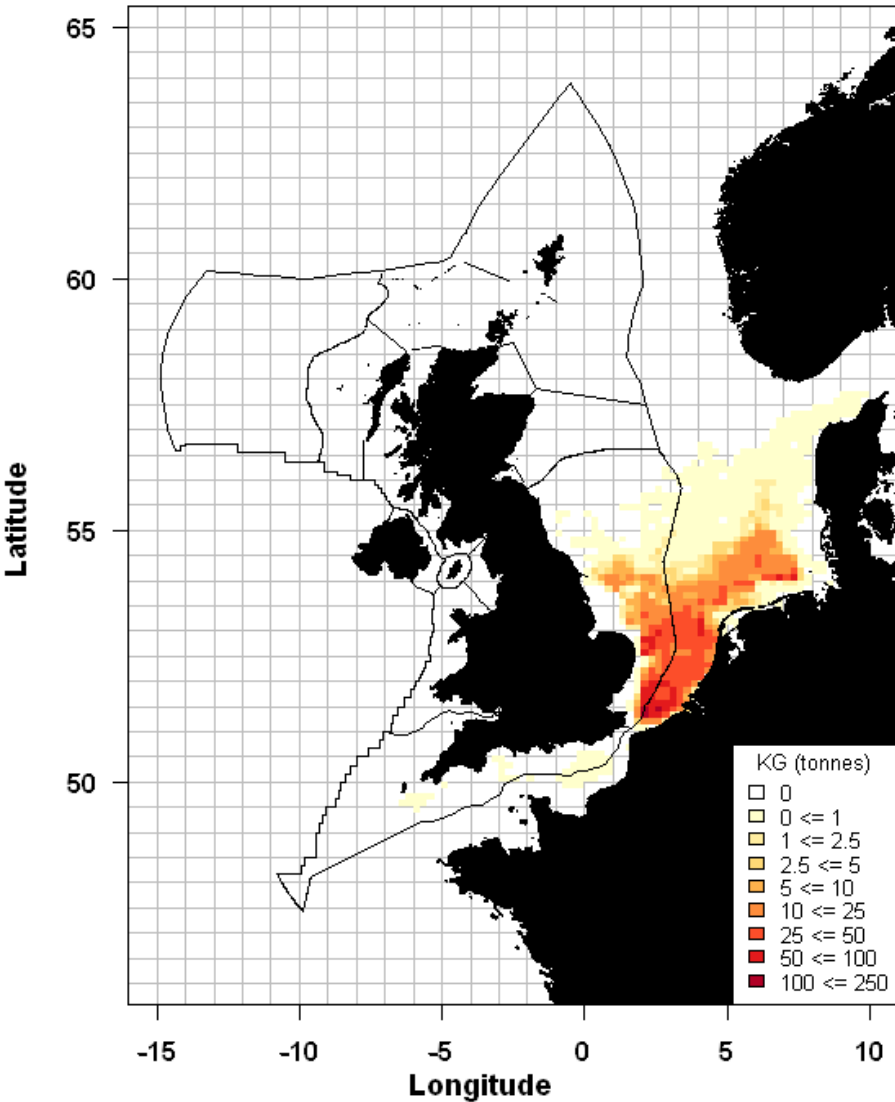


RAZ 1115

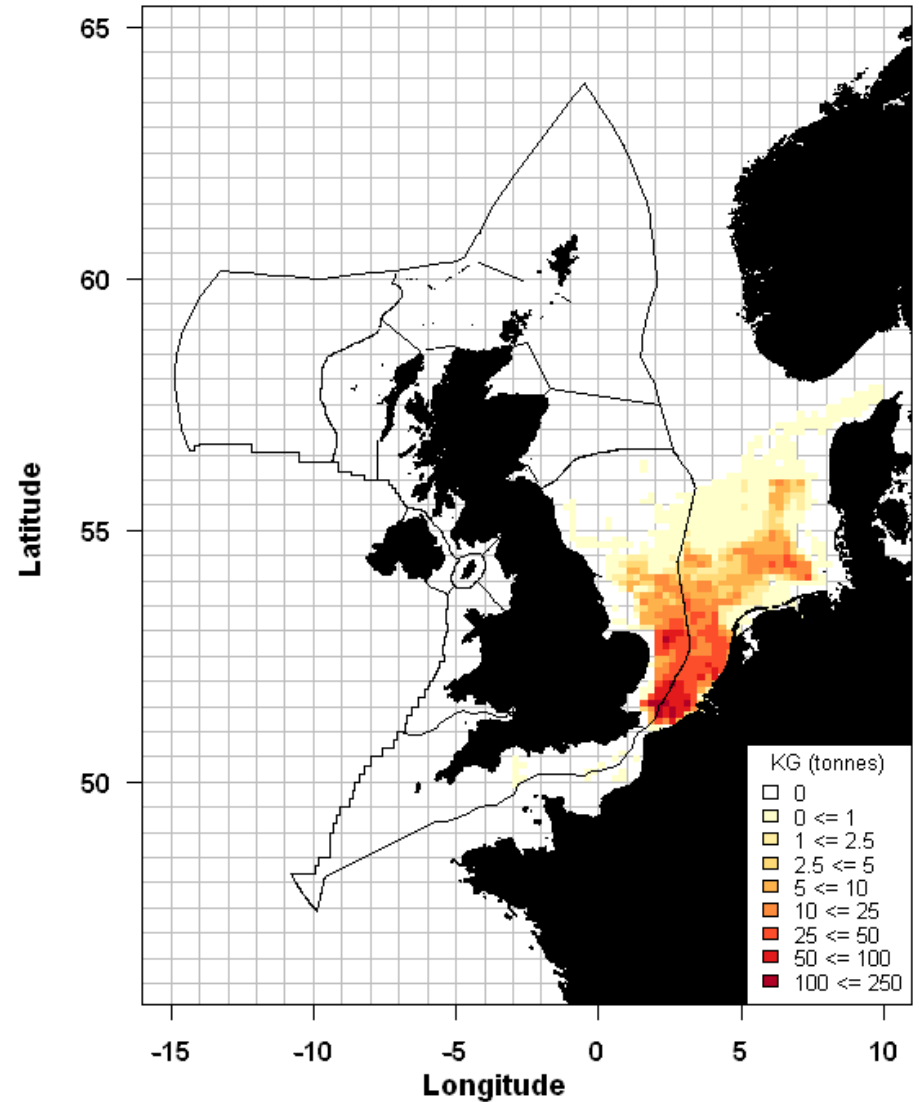


Species distribution by period

SOL 0610

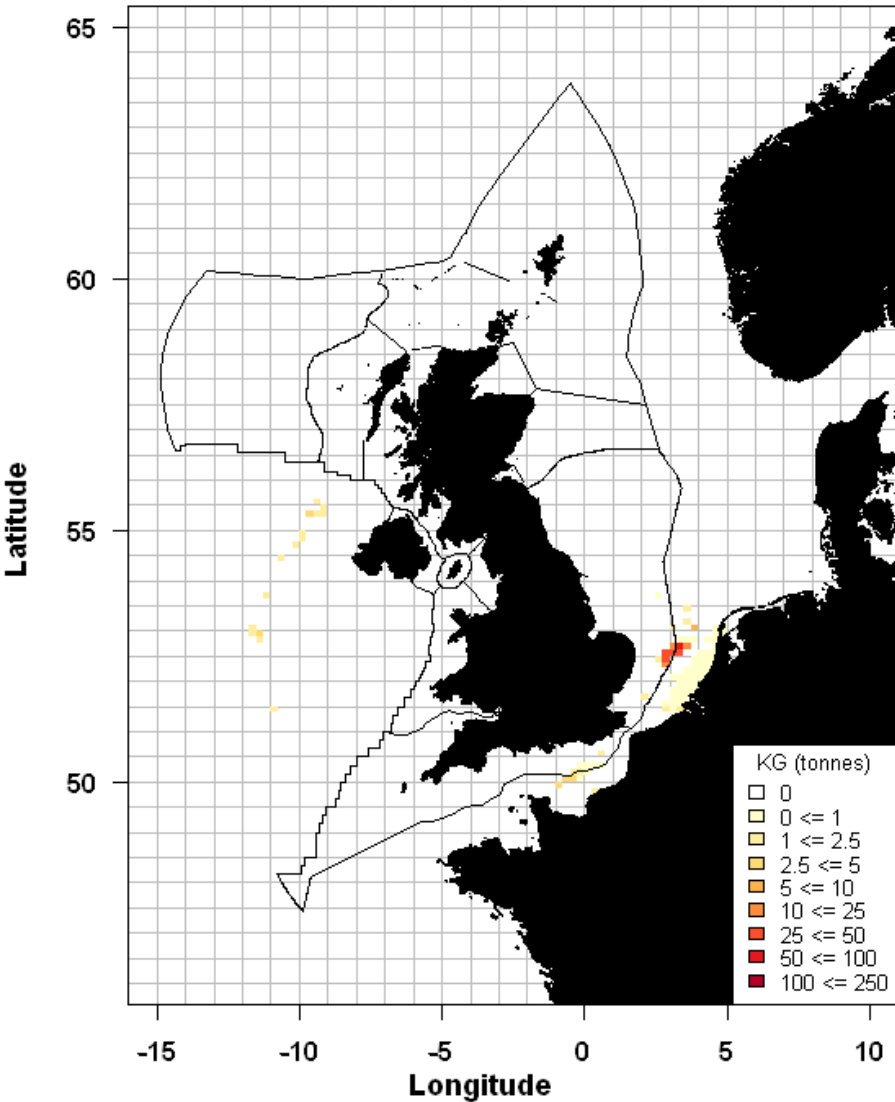


SOL 1115

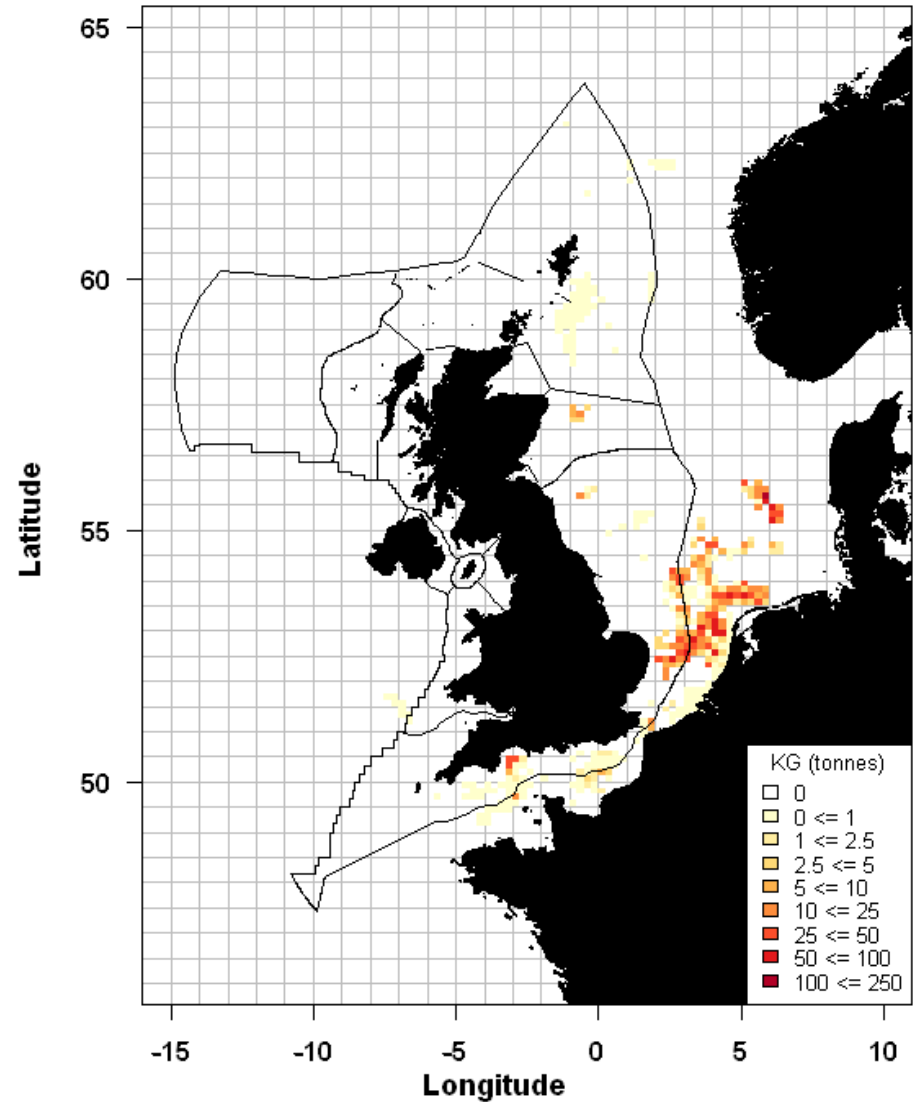


Species distribution by period

SPR 0610

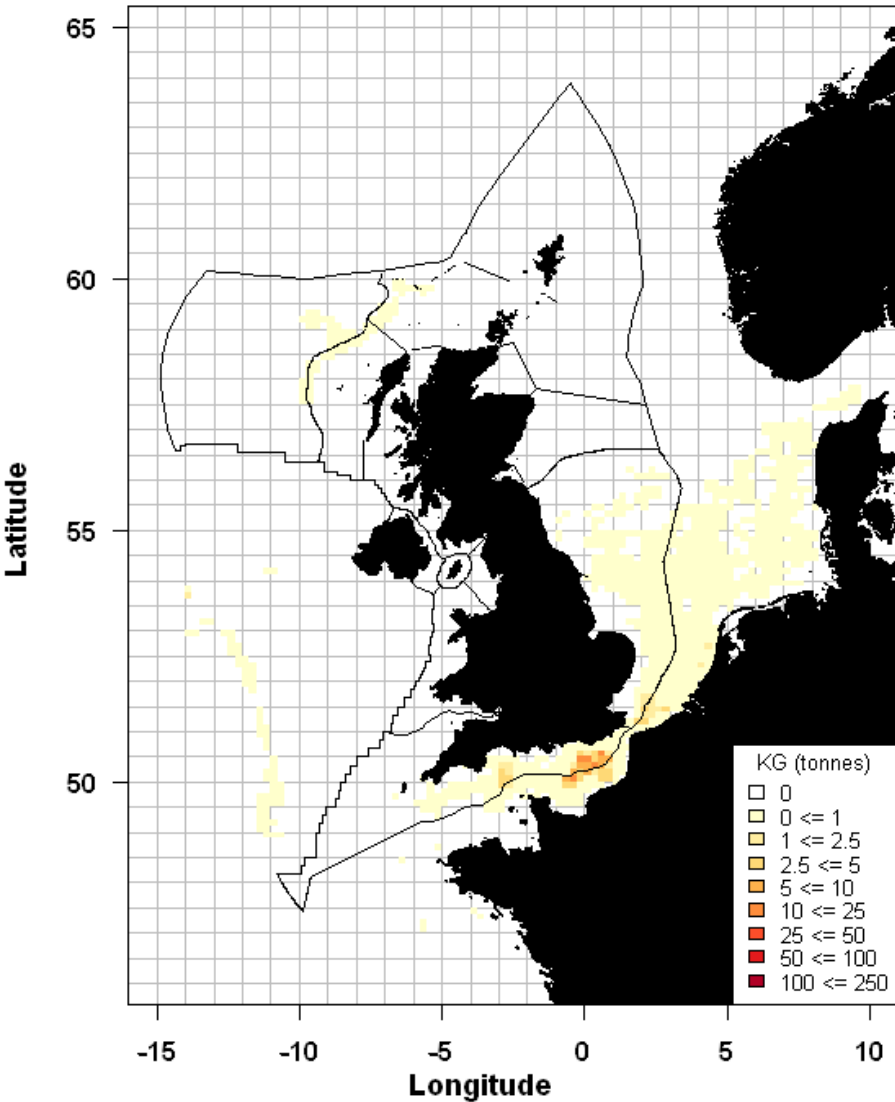


SPR 1115

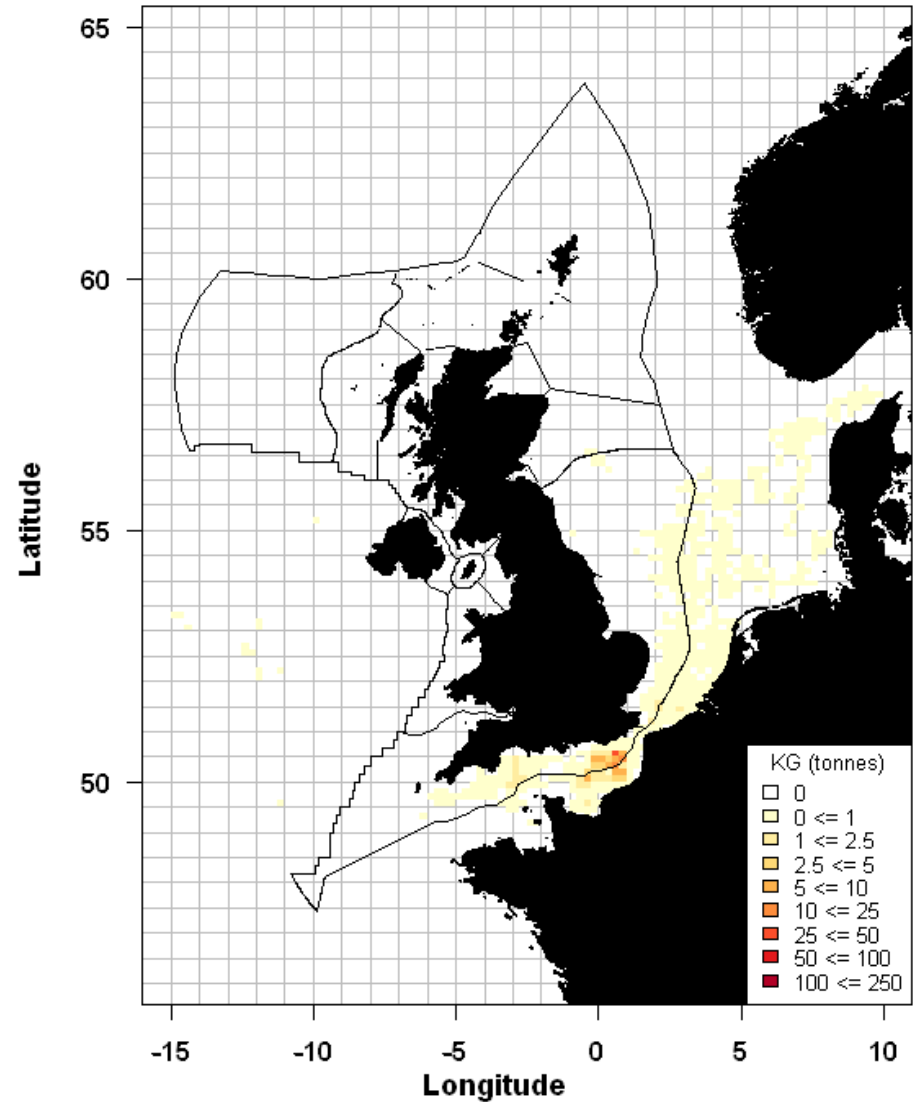


Species distribution by period

SQU 0610

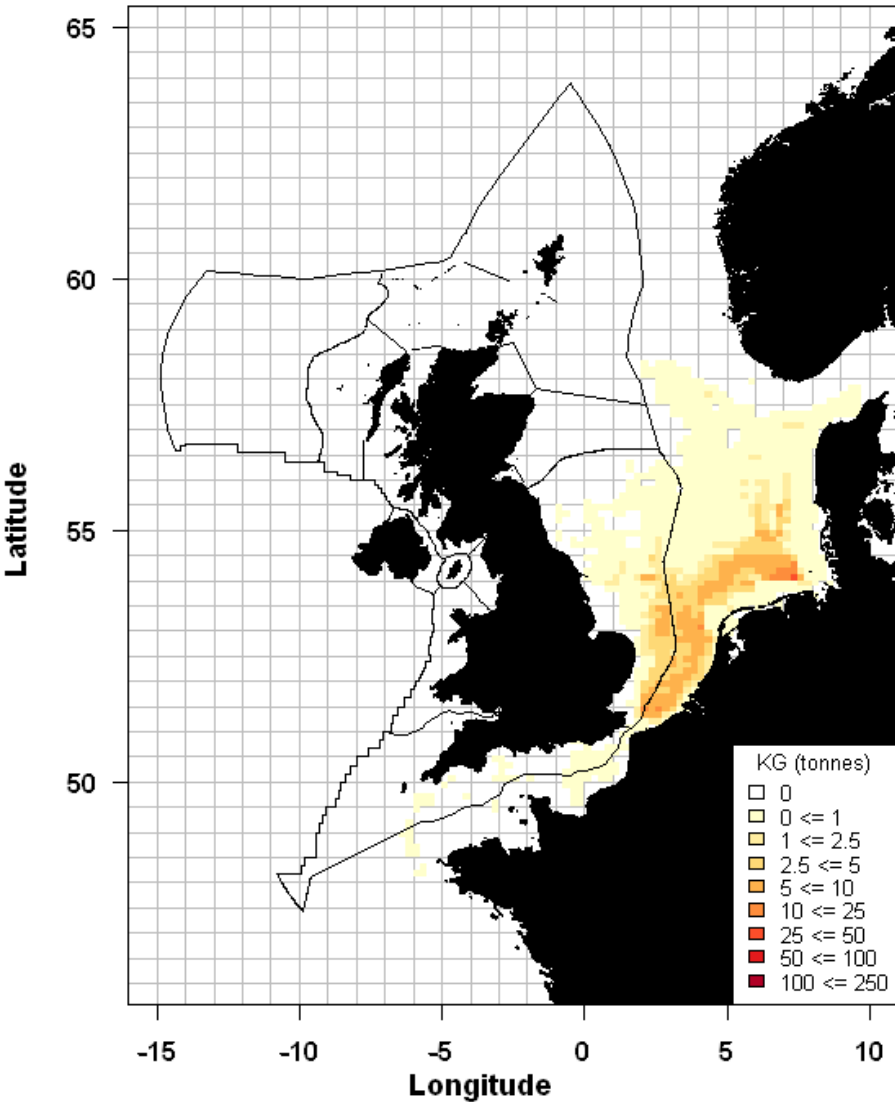


SQU 1115

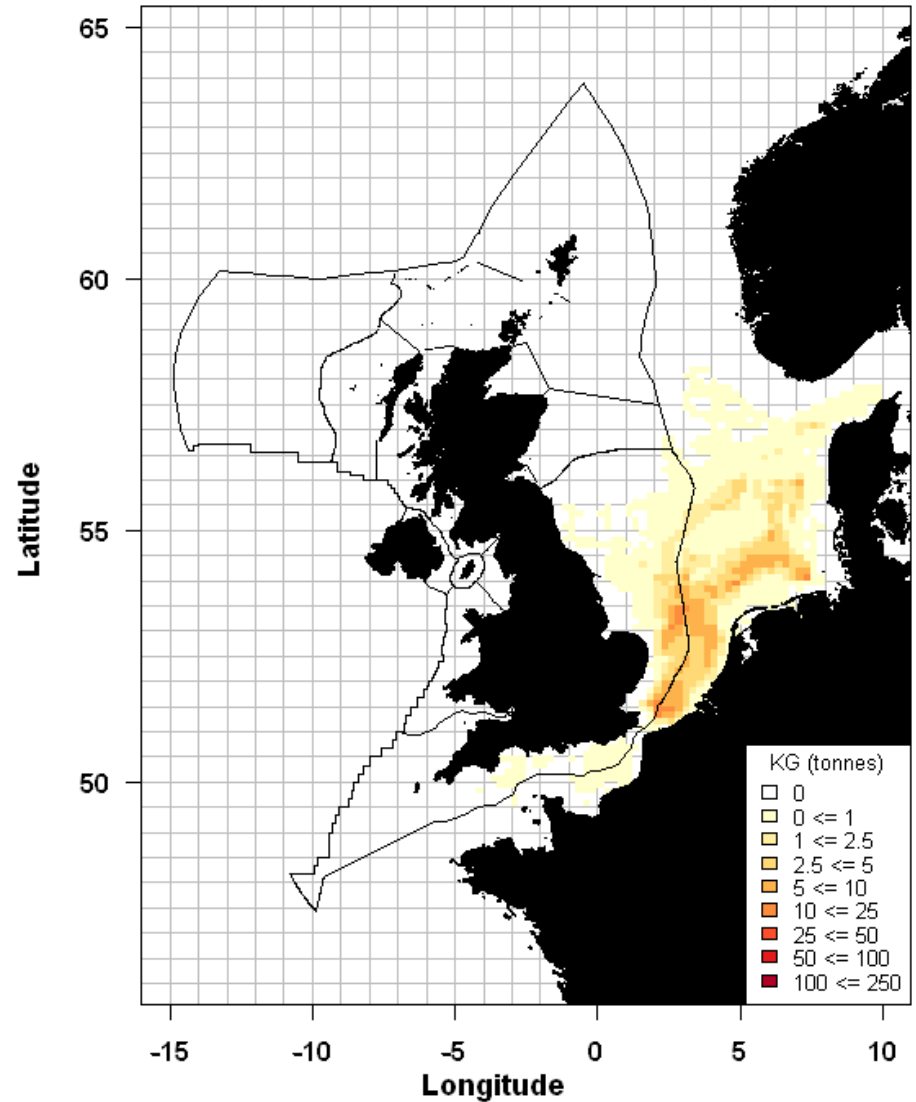


Species distribution by period

TUR 0610

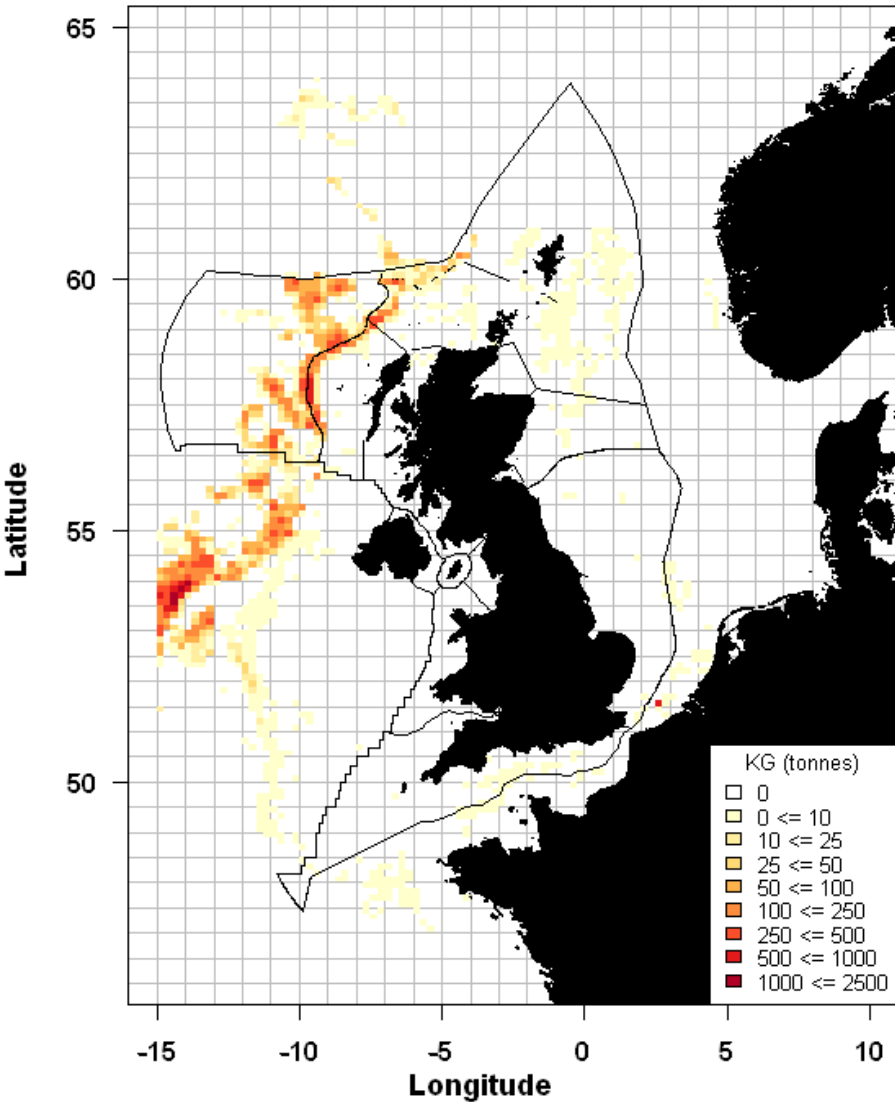


TUR 1115

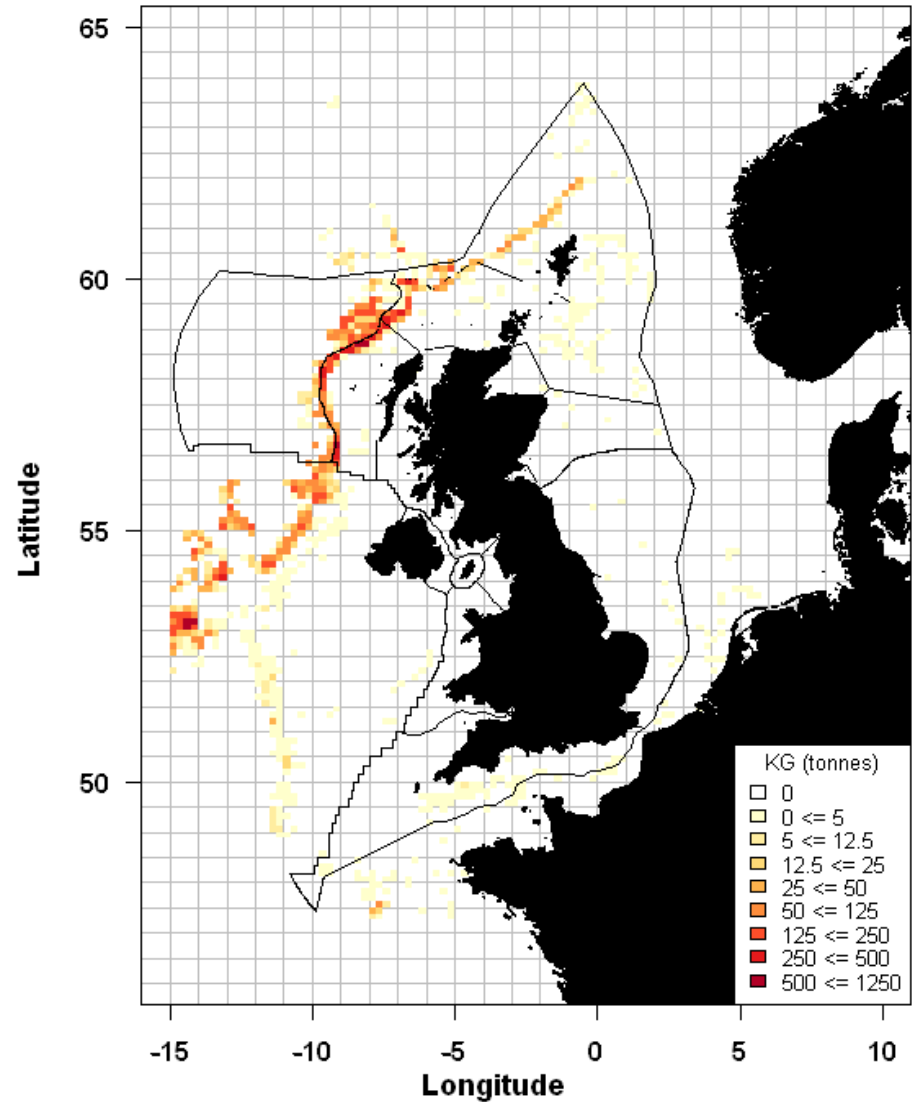


Species distribution by period

WHB 0610

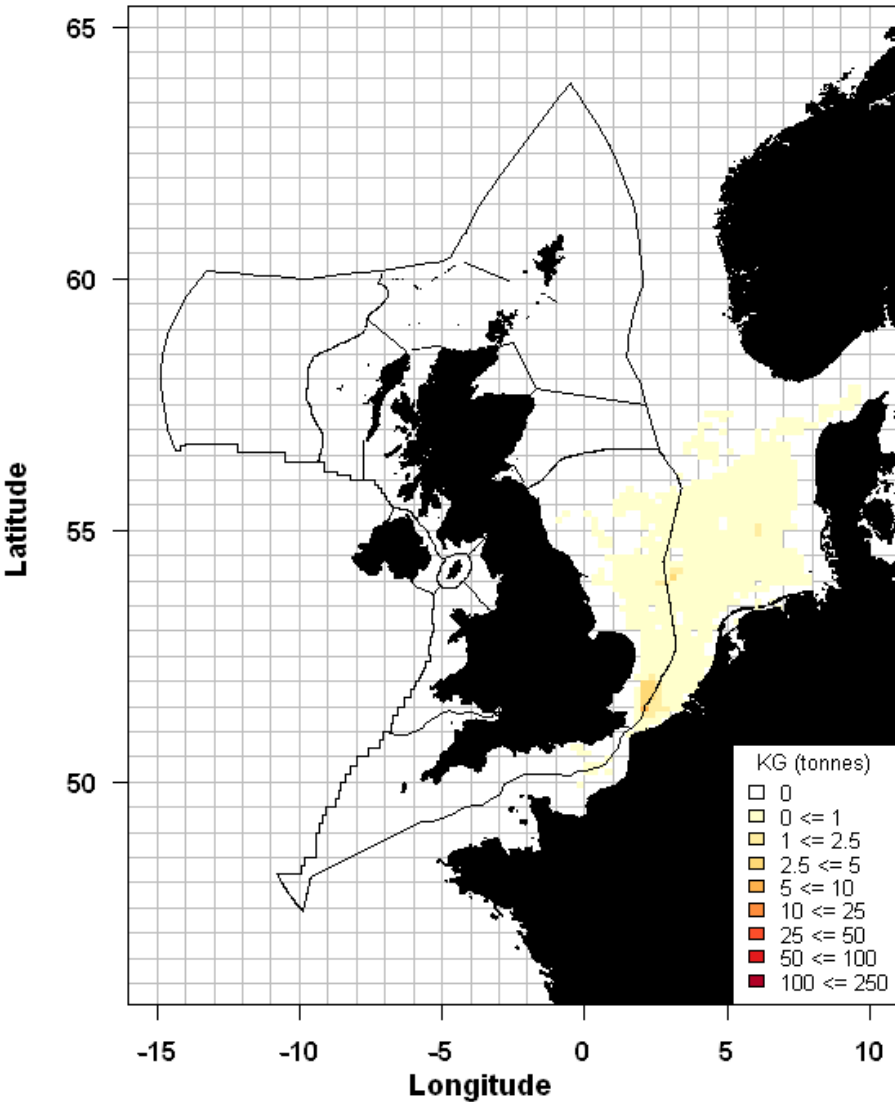


WHB 1115

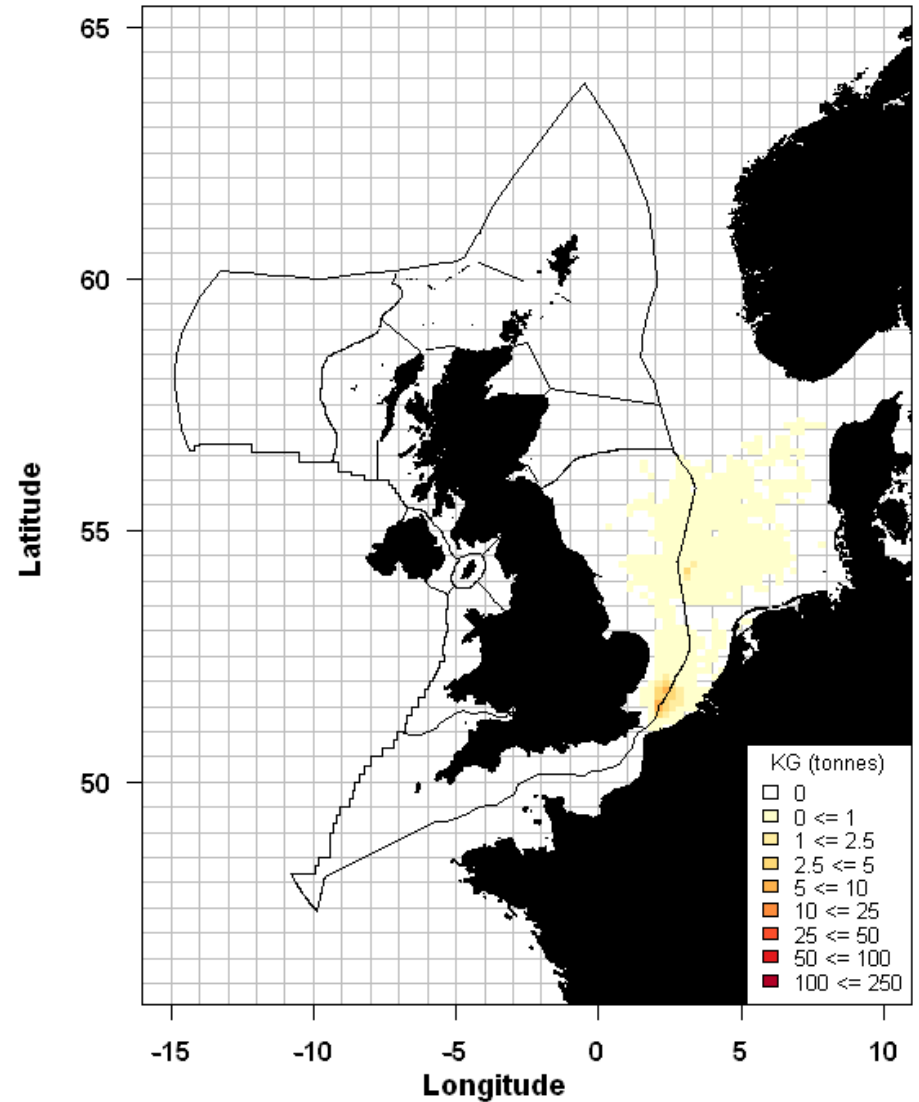


Species distribution by period

WHE 0610

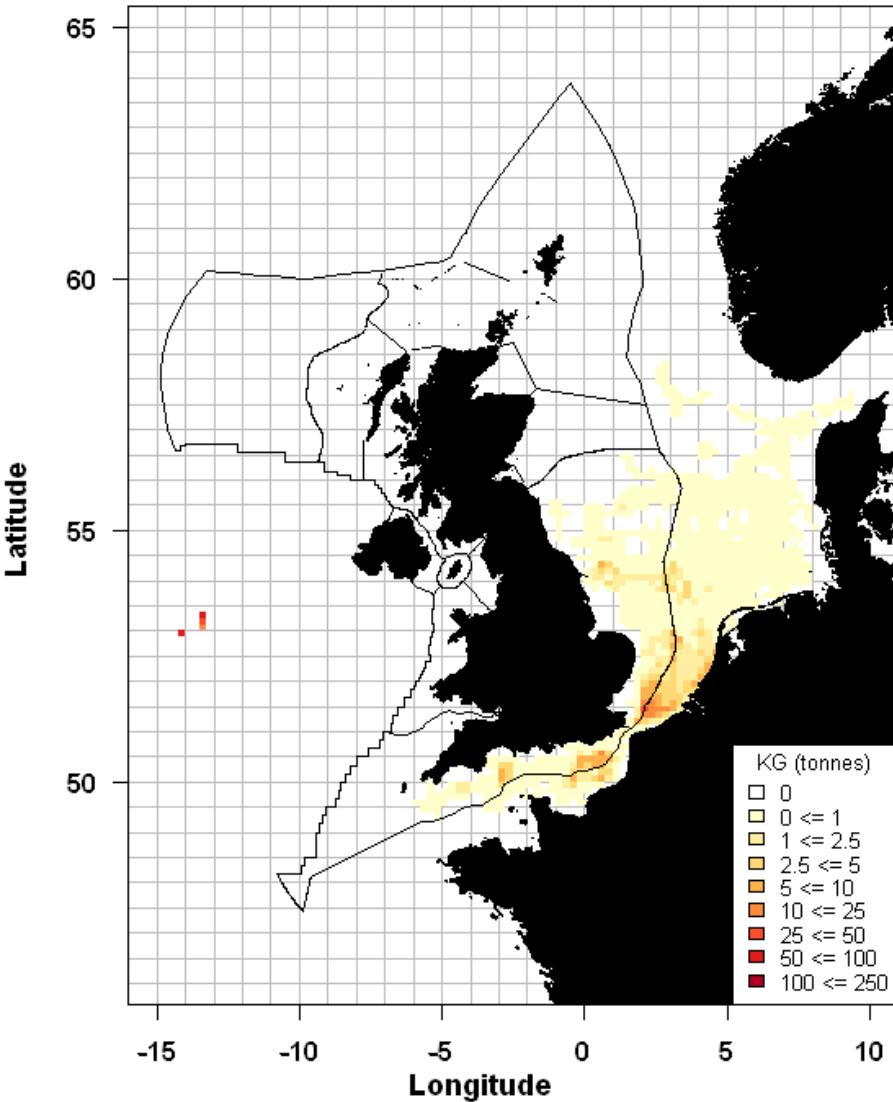


WHE 1115

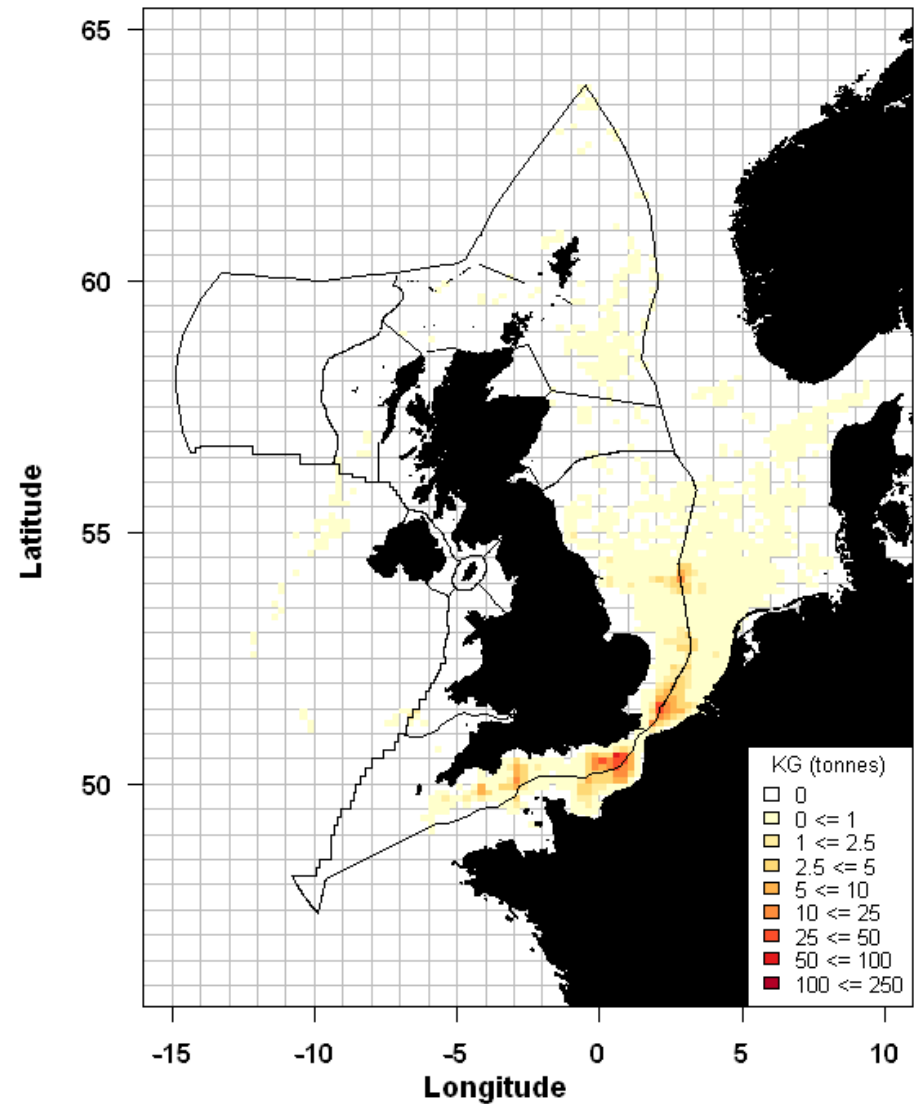


Species distribution by period

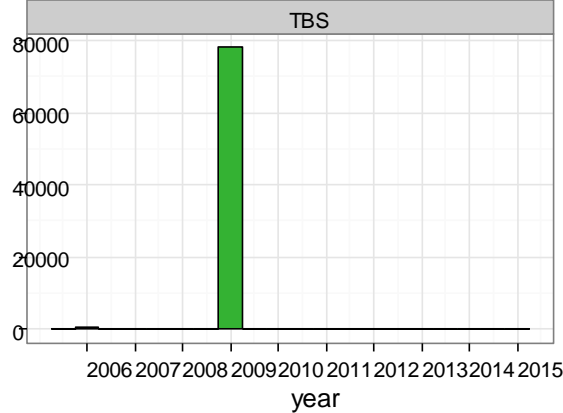
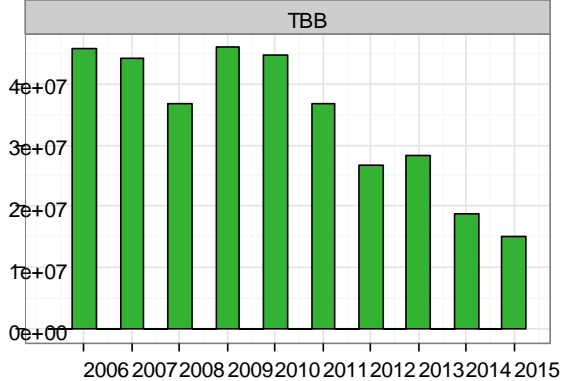
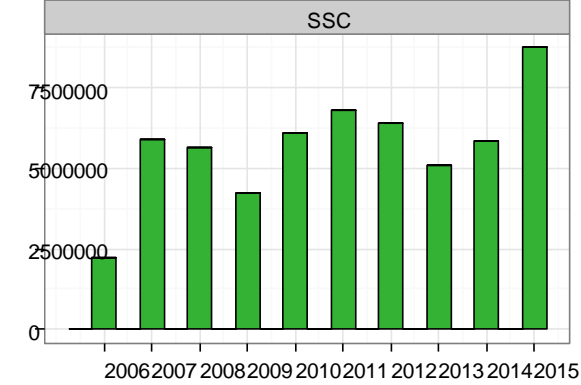
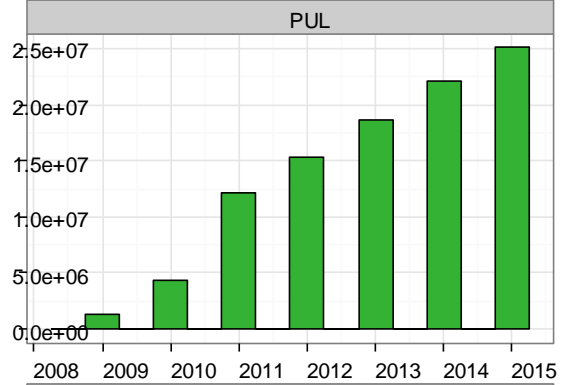
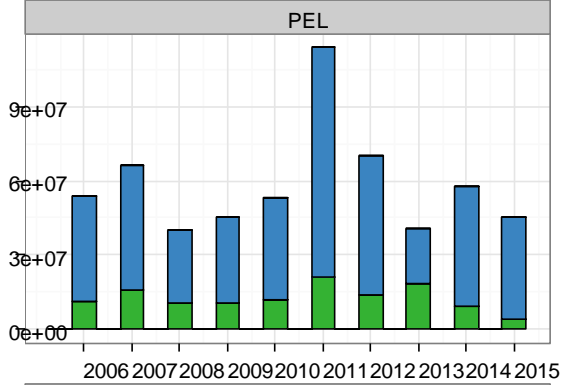
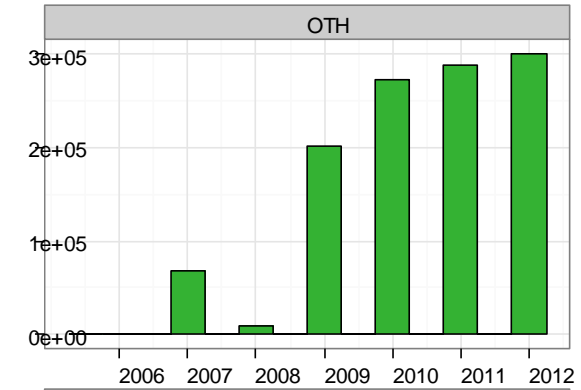
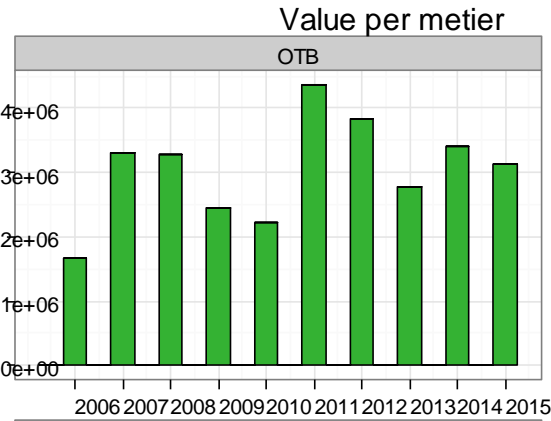
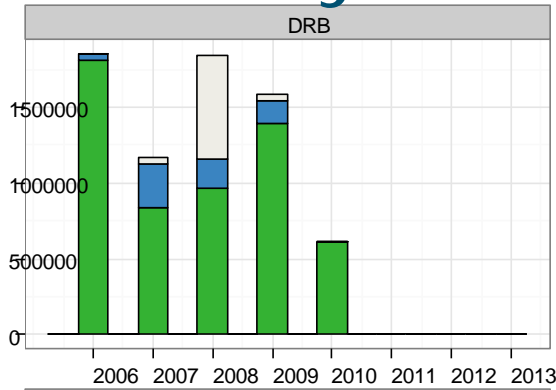
WHG 0610



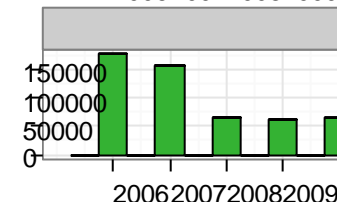
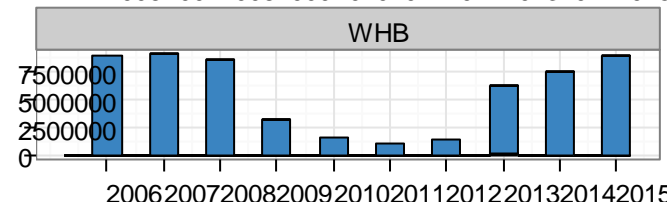
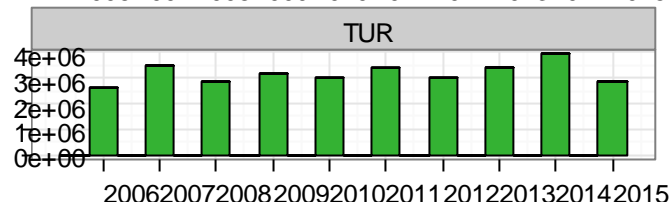
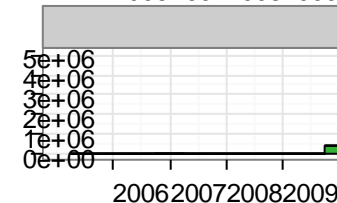
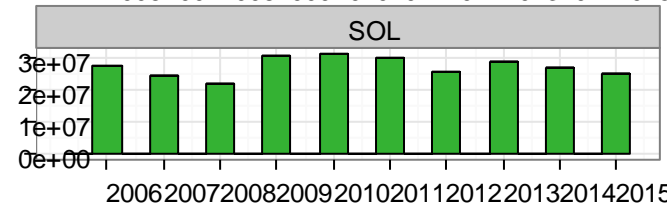
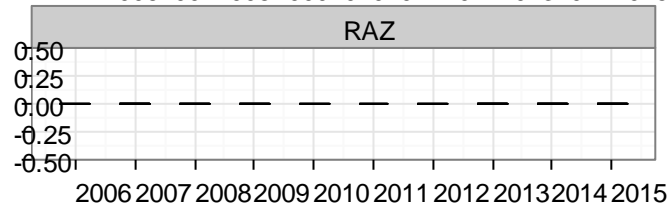
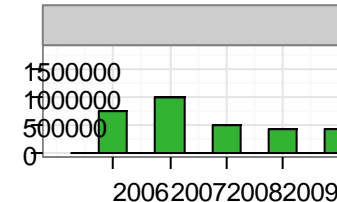
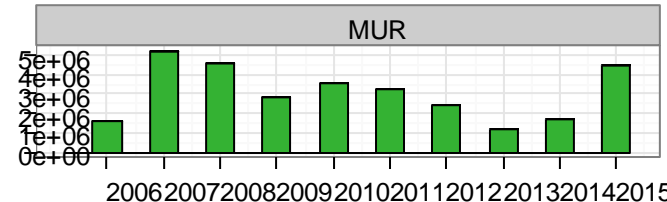
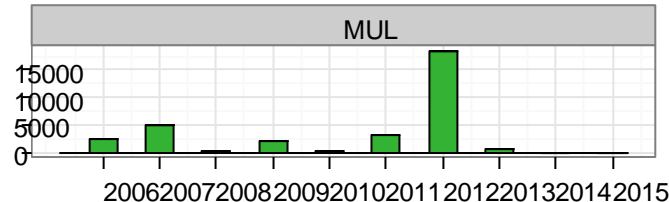
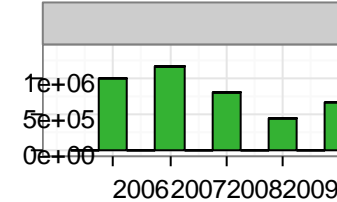
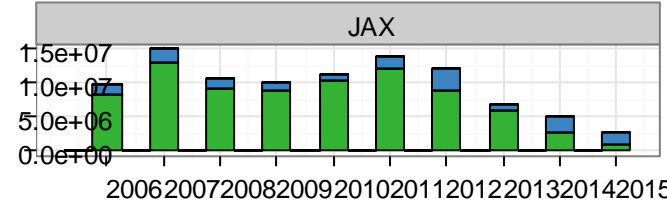
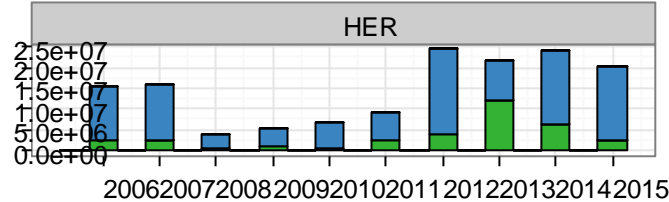
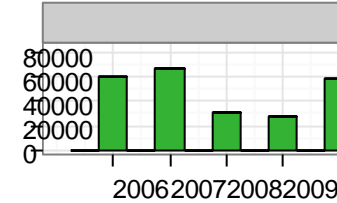
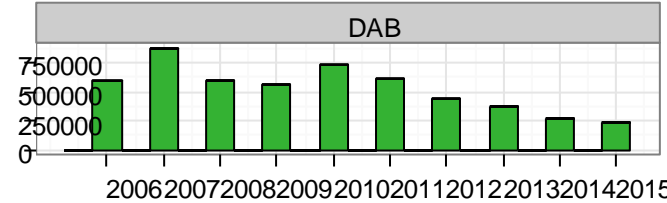
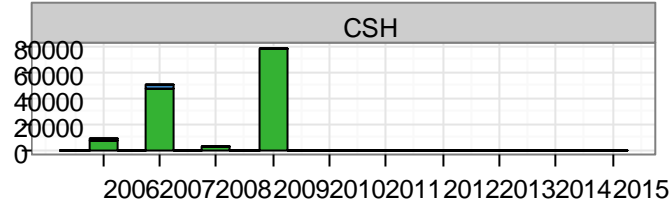
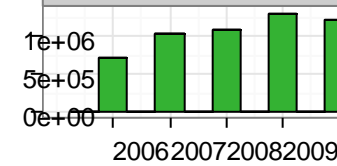
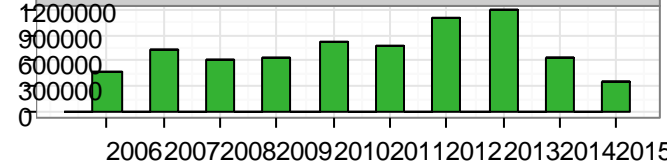
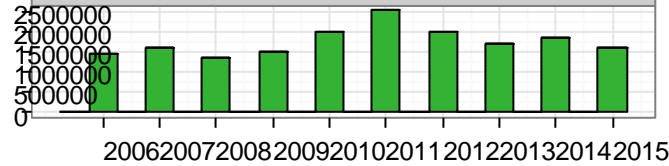
WHG 1115



Value by metier



EEZ England northern Ireland Scotland Wales



year