



EDventure

vereniging van
onderwijs
adviesbureaus

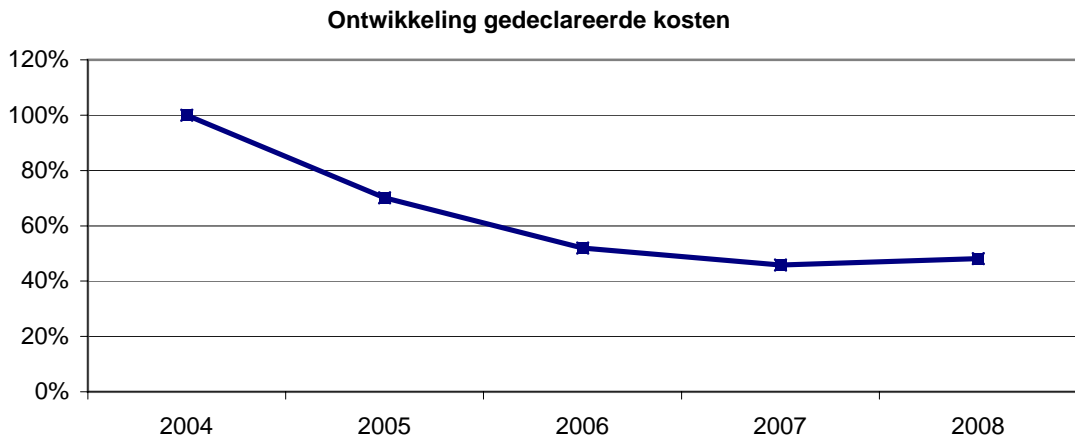
**BIJLAGEN BEHORENDE BIJ DE VERANTWOORDING
MIDDELEN FLANKEREND BELEID 2004 T/M 2008
(amendement 29)**

FINANCIËLE ANALYSES

Overzicht besteding middelen flankerend beleid 2004 t/m 2008 (amendement 29)

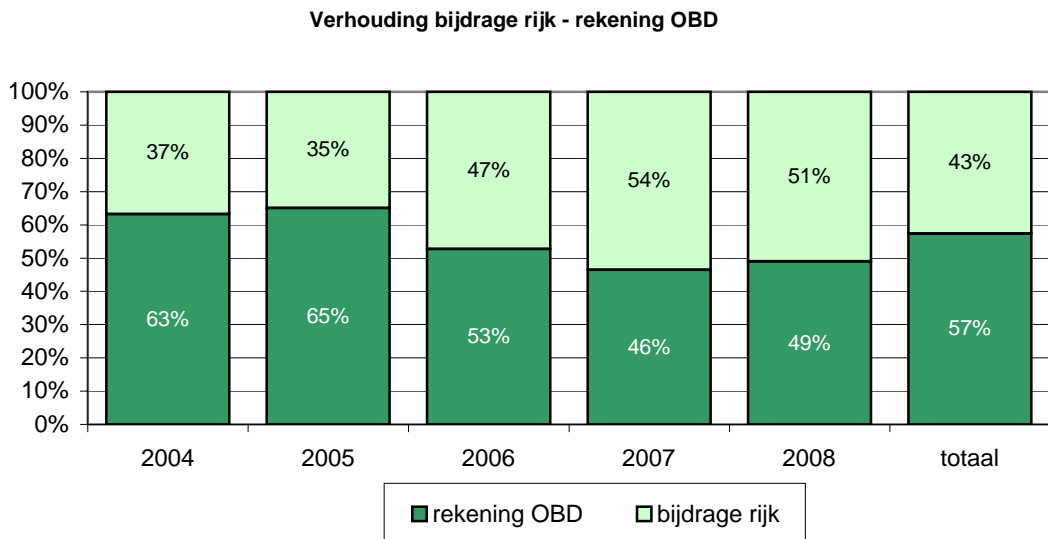
1. Gedecclareerde kosten

	2004	2005	2006	2007	2008	totaal
totaal gedeclareerd	8.970.746	6.292.198	4.657.430	4.109.616	4.315.743	28.345.733
% ontwikkeling	100%	70%	52%	46%	48%	



2. a. Verhouding bijdrage rijk - rekening OBD

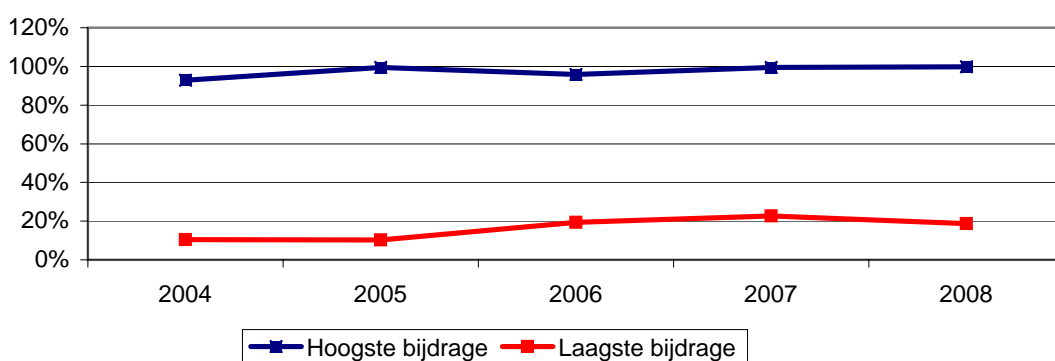
	2004	2005	2006	2007	2008	totaal
rekening OBD	5.682.067	4.092.198	2.457.430	1.909.616	2.115.743	16.257.054
bijdrage rijk	3.288.679	2.200.000	2.200.000	2.200.000	2.200.000	12.088.679
rekening OBD	63%	65%	53%	46%	49%	57%
bijdrage rijk	37%	35%	47%	54%	51%	43%



2. b. Verhouding bijdrage rijk - rekening OBD (exponenten)

	2004	2005	2006	2007	2008
<u>Hoogste bijdrage</u>					
rekening OBD	7%	0%	4%	0%	0%
bijdrage rijk	93%	100%	96%	100%	100%
<u>Laagste bijdrage</u>					
rekening OBD	90%	90%	81%	77%	81%
bijdrage rijk	10%	10%	19%	23%	19%

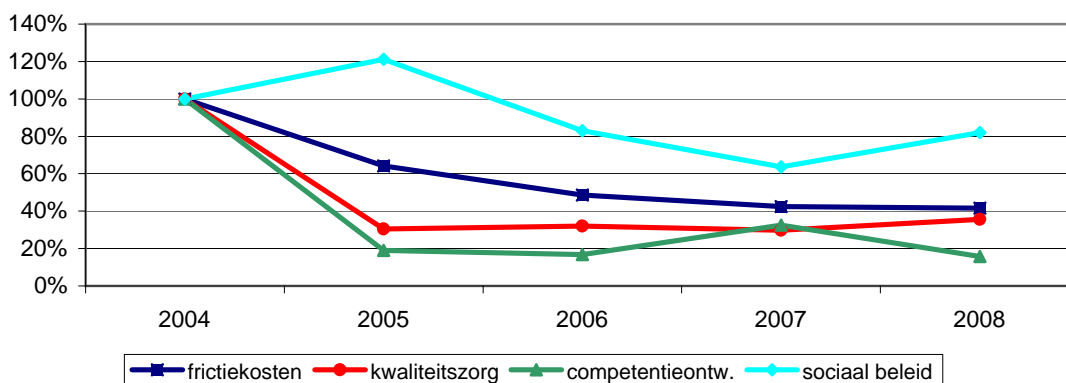
Verhouding bijdrage rijk - rekening OBD (exponenten)



3 Uitgaven flankerend beleid naar uitgavensoort

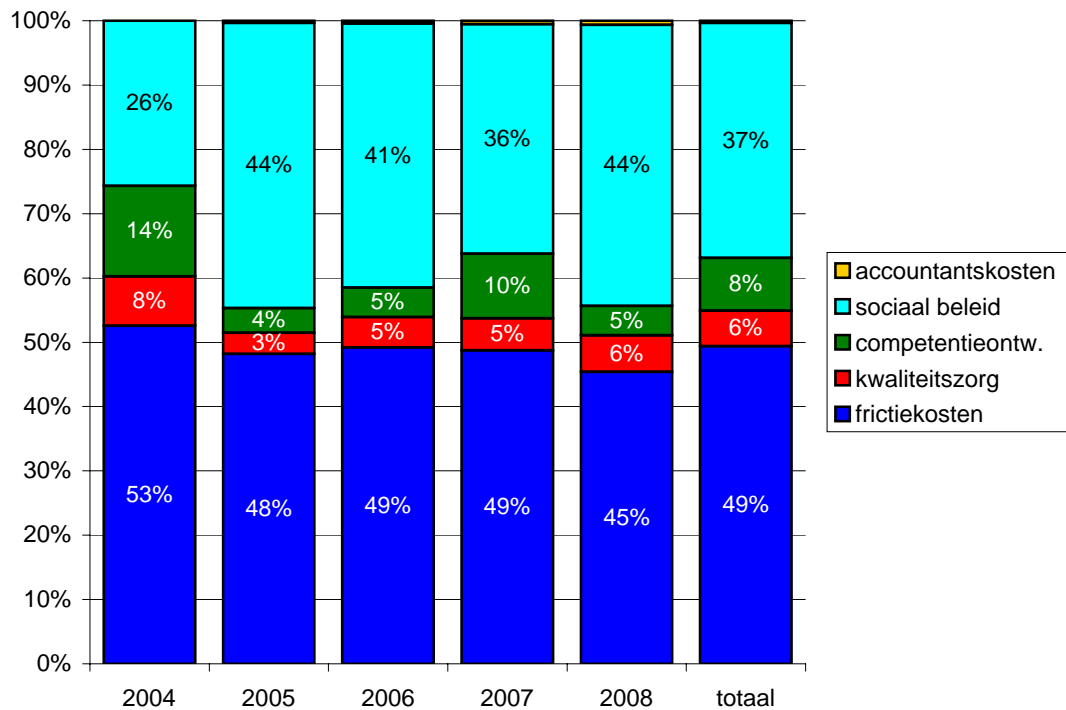
	2004	2005	2006	2007	2008	totaal
fRICTIEKOSTEN	4.716.333	3.030.961	2.290.353	2.003.275	1.958.829	13.999.717
kwALITEITZORG	685.955	208.850	219.904	204.470	244.245	1.563.420
COMPETENTIEONTW.	1.265.641	240.512	212.983	412.325	198.859	2.330.317
SOCIAAL BELEID	2.302.817	2.789.073	1.912.572	1.467.174	1.886.910	10.358.526
ACCOUNTANTSKOSTEN		22.832	21.648	22.373	26.900	93.752
Totaal	8.970.746	6.292.198	4.657.430	4.109.616	4.315.743	28.345.733
fRICTIEKOSTEN	100%	64%	49%	42%	42%	
kwALITEITZORG	100%	30%	32%	30%	36%	
COMPETENTIEONTW.	100%	19%	17%	33%	16%	
SOCIAAL BELEID	100%	121%	83%	64%	82%	

Ontwikkeling kosten naar uitgavensoort



	2004	2005	2006	2007	2008	totaal
fRICTIEKOSTEN	53%	48%	49%	49%	45%	49%
KWALITEITZORG	8%	3%	5%	5%	6%	6%
COMPETENTIEONTW.	14%	4%	5%	10%	5%	8%
SOCIAAL BELEID	26%	44%	41%	36%	44%	37%
ACCOUNTANTSKOSTEN		0%	0%	1%	1%	0%
Totaal	100%	100%	100%	100%	100%	100%

Uitgaven flankerend beleid naar uitgavensoort



**Overzicht besteding middelen flankerend beleid 2004 t/m 2008 (amendement 29)
naar organisatie**

OBD	aantal leerlingen	budget	gede- clareerd	uitgekeerd	eigen rekening absoluut	%	% aandeel rijk
ABC	64.753	480.398	1.313.422	480.398	833.024	63%	37%
Ijselgroep	144.494	1.071.992	2.373.083	1.071.992	1.301.091	55%	45%
Kobalt	0	223.829	775.304	223.829	551.475	71%	29%
MHR	49.905	370.242	568.745	370.242	198.503	35%	65%
Edux	68.200	505.971	2.149.519	505.971	1.643.547	76%	24%
Vrijescholen	13.376	99.236	106.803	99.236	7.567	7%	93%
De Kempen	19.225	142.629	326.571	142.629	183.942	56%	44%
DOBA + SOM	70.354	521.952	1.800.313	521.952	1.278.362	71%	29%
Marant	79.587	590.451	1.222.063	590.451	631.612	52%	48%
Expertis	63.738	472.868	1.103.871	472.868	631.003	57%	43%
HCO	42.945	318.606	447.251	318.606	128.645	29%	71%
ABCG	12.205	90.548	249.071	90.548	158.523	64%	36%
Drielanden	46.319	343.638	421.335	343.638	77.698	18%	82%
Consent	79.936	593.040	1.347.577	593.040	754.537	56%	44%
OCGH	22.541	167.230	273.982	167.230	106.752	39%	61%
Giralis	80.597	597.944	2.695.867	597.944	2.097.923	78%	22%
Noordwest	80.617	598.092	1.893.389	598.092	1.295.297	68%	32%
Cedin	100.740	747.383	888.285	747.383	140.902	16%	84%
Duin en Bollenstreek	16.809	124.705	148.172	124.705	23.467	16%	84%
Eduniek	124.153	921.083	2.181.761	921.083	1.260.678	58%	42%
RPCZ	32.917	244.209	786.405	244.209	542.196	69%	31%
Centraal Nederland	43.664	323.940	709.509	323.940	385.569	54%	46%
Zaanstreek Waterlar	32.380	240.225	451.565	240.225	211.340	47%	53%
Driestar	31.197	231.449	534.276	231.449	302.827	57%	43%
CED Groep	156.433	1.160.566	1.494.974	1.160.566	334.408	22%	78%
Kersten Onderwijsce	5.656	41.961	75.271	30.641	44.630	59%	56%
BCO	28.701	212.931	438.661	212.931	225.730	51%	49%
SAD	2.269	16.834	24.724	16.834	7.890	32%	68%
Onderwijsadvies	68.597	508.917	1.164.217	508.917	655.301	56%	44%
GH-GPC	18.484	137.132	379.747	137.132	242.615	64%	36%
Totaal	1.600.792	12.100.000	28.345.733	12.088.679	16.257.054	57%	43%

Overzicht besteding middelen flankerend beleid 2008 (amendement 29) naar organisatie

OBD	aantal leerlingen	budget	gedecleerd	uitgekeerd	eigen rekening absoluut	%	% aandeel rijk
ABC	64.753	88.991	475.551	88.991	386.560	81%	19%
Ijselgroep	144.494	198.581	273.759	198.581	75.178	27%	73%
Kobalt	0	0	0	0	0	0%	0%
MHR	49.905	68.585	82.838	68.585	14.253	17%	83%
Edux	68.200	93.729	156.950	93.729	63.221	40%	60%
Vrijescholen	13.376	18.383	20.201	18.383	1.818	9%	91%
De Kempen	19.225	26.421	130.378	26.421	103.957	80%	20%
DOBA + SOM	70.354	96.689	227.537	96.689	130.848	58%	42%
Marant	79.587	109.378	140.185	109.378	30.807	22%	78%
Expertis	63.738	87.596	216.063	87.596	128.466	59%	41%
HCO	42.945	59.020	64.031	59.020	5.011	8%	92%
ABCG	12.205	16.774	24.417	16.774	7.644	31%	69%
Drielanden	46.319	63.657	75.133	63.657	11.476	15%	85%
Consent	79.936	109.858	141.277	109.858	31.420	22%	78%
OCGH	22.541	30.979	49.896	30.979	18.917	38%	62%
Giralis	80.597	110.766	317.728	110.766	206.962	65%	35%
Noordwest	80.617	110.794	270.203	110.794	159.409	59%	41%
Cedin	100.740	138.449	138.665	138.449	216	0%	100%
Duin en Bollenstreek	16.809	23.101	31.373	23.101	8.272	26%	74%
Eduniek	124.153	170.626	412.884	170.626	242.258	59%	41%
RPCZ	32.917	45.238	141.896	45.238	96.657	68%	32%
Centraal Nederland	43.664	60.008	115.664	60.008	55.656	48%	52%
Zaanstreek Waterlar	32.380	44.500	95.078	44.500	50.577	53%	47%
Driestar	31.197	42.875	59.846	42.875	16.971	28%	72%
CED Groep	156.433	214.989	306.536	214.989	91.547	30%	70%
Kersten Onderwijsce	5.656	7.773	15.556	7.773	7.782	50%	50%
BCO	28.701	39.444	82.190	39.444	42.746	52%	48%
SAD	2.269	3.118	8.298	3.118	5.180	62%	38%
Onderwijsadvies	68.597	94.274	153.343	94.274	59.069	39%	61%
GH-GPC	18.484	25.403	88.267	25.403	62.864	71%	29%
Totaal	1.600.792	2.200.000	4.315.743	2.200.000	2.115.743	49%	51%

Overzicht besteding middelen flankerend beleid 2007 (amendement 29) naar organisatie

OBD	aantal leerlingen	budget	gedecclareerd	uitgekeerd	eigen rekening absoluut	%	% aandeel rijk
ABC	64.753	88.991	292.237	88.991	203.245	70%	30%
Ijselgroep	144.494	198.581	313.916	198.581	115.335	37%	63%
Kobalt	0	0	0	0	0	0%	0%
MHR	49.905	68.585	87.350	68.585	18.764	21%	79%
Edux	68.200	93.729	152.081	93.729	58.352	38%	62%
Vrijescholen	13.376	18.383	21.225	18.383	2.842	13%	87%
De Kempen	19.225	26.421	50.001	26.421	23.580	47%	53%
Doba	29.384	40.383	40.582	40.383	199	0%	100%
Marant	79.587	109.378	143.324	109.378	33.946	24%	76%
Expertis	63.738	87.596	235.230	87.596	147.634	63%	37%
HCO	42.945	59.020	73.780	59.020	14.760	20%	80%
ABCG	12.205	16.774	30.174	16.774	13.400	44%	56%
Drienlanden	46.319	63.657	69.636	63.657	5.979	9%	91%
Consent	79.936	109.858	484.393	109.858	374.535	77%	23%
OCGH	22.541	30.979	36.826	30.979	5.847	16%	84%
Giralis	80.597	110.766	226.208	110.766	115.442	51%	49%
Noordwest	80.617	110.794	371.994	110.794	261.200	70%	30%
Cedin	100.740	138.449	141.153	138.449	2.704	2%	98%
Duin en bollenstreek	16.809	23.101	23.101	23.101	0	0%	100%
Eduniek	124.153	170.626	204.712	170.626	34.086	17%	83%
RPCZ	32.917	45.238	164.145	45.238	118.906	72%	28%
Centraal Nederland	43.664	60.008	108.156	60.008	48.148	45%	55%
Zaanstreek Waterlar	32.380	44.500	77.493	44.500	32.993	43%	57%
Driestar	31.197	42.875	55.677	42.875	12.802	23%	77%
CED Groep	156.433	214.989	252.122	214.989	37.133	15%	85%
SOM	40.970	56.306	109.019	56.306	52.713	48%	52%
Kersten onderwijsce	5.656	7.773	19.706	7.773	11.933	61%	39%
BCO	28.701	39.444	119.884	39.444	80.439	0%	0%
SAD	2.269	3.118	9.626	3.118	6.508	68%	32%
Onderwijsadvies	68.597	94.274	148.093	94.274	53.819	36%	64%
GH-GPC	18.484	25.403	47.774	25.403	22.372	47%	53%
Totaal	1.600.792	2.200.000	4.109.616	2.200.000	1.909.616	46%	54%

Overzicht besteding middelen flankerend beleid 2006 (amendement 29) naar organisatie

OBD	aantal leerlingen	budget	gedecclareerd	uitgekeerd	eigen rekening absoluut	%	% aandeel rijk
ABC	64.753	86.404	141.412	86.404	55.008	39%	61%
Ijselgroep	144.494	192.808	601.441	192.808	408.633	68%	32%
Kobalt	47.926	63.951	329.780	63.951	265.829	81%	19%
MHR	49.905	66.592	77.686	66.592	11.094	14%	86%
Edux	68.200	91.004	144.667	91.004	53.663	37%	63%
Vrijescholen	13.376	17.849	18.637	17.849	788	4%	96%
De Kempen	19.225	25.653	35.027	25.653	9.374	27%	73%
Doba	29.384	39.209	51.009	39.209	11.800	23%	77%
Marant	79.587	106.199	182.224	106.199	76.025	42%	58%
Expertis	63.738	85.050	235.716	85.050	150.666	64%	36%
HCO	42.945	57.305	83.123	57.305	25.818	31%	69%
ABCG	12.205	16.286	32.546	16.286	16.260	50%	50%
Drienlanden	46.319	61.807	98.531	61.807	36.724	37%	63%
Consent	79.936	106.664	222.249	106.664	115.584	52%	48%
OCGH	22.541	30.078	44.996	30.078	14.918	33%	67%
Giralis	80.597	107.546	165.981	107.546	58.435	35%	65%
Noordwest	80.617	107.573	339.595	107.573	232.022	68%	32%
Cedin	100.740	134.424	139.502	134.424	5.078	4%	96%
Duin en bollenstreek	16.809	22.429	22.515	22.429	85	0%	100%
Eduniek	124.153	165.666	552.729	165.666	387.063	70%	30%
RPCZ	32.917	43.923	166.556	43.923	122.632	74%	26%
Centraal Nederland	43.664	58.264	115.618	58.264	57.354	50%	50%
Zaanstreek Waterlar	32.380	43.207	46.462	43.207	3.255	7%	93%
Driestar	31.197	41.628	63.544	41.628	21.916	34%	66%
CED Groep	156.433	208.740	243.470	208.740	34.730	14%	86%
SOM	40.970	54.669	129.335	54.669	74.666	58%	42%
Kersten onderwijsce	5.656	7.547	7.069	7.547	-478	-7%	107%
BCO	28.701	38.298	46.513	38.298	8.215	18%	82%
SAD	2.269	3.028	3.400	3.028	372	11%	89%
Onderwijsadvies	68.597	91.534	214.064	91.534	122.530	57%	43%
GH-GPC	18.484	24.664	102.034	24.664	77.369	76%	24%
Totaal	1.648.718	2.200.000	4.657.430	2.200.000	2.457.430	52,8%	47,2%

Overzicht besteding middelen flankerend beleid 2005 (amendement 29) naar organisatie

OBD	aantal leerlingen	budget	gede- clareerd	uitgekeerd	eigen rekening absoluut	%	% aandeel rijk
ABC	64.753	86.404	133.942	86.404	47.538	35%	65%
Ijselgroep	144.494	192.808	771.613	192.808	578.805	75%	25%
Kobalt	47.926	63.951	277.369	63.951	213.418	77%	23%
MHR	49.905	66.592	198.755	66.592	132.163	66%	34%
Edux	68.200	91.004	885.504	91.004	794.500	90%	10%
Vrijescholen	13.376	17.849	17.929	17.849	80	0%	100%
De Kempen	19.225	25.653	53.534	25.653	27.881	52%	48%
Doba	29.384	39.209	68.687	39.209	29.478	43%	57%
Marant	79.587	106.199	274.213	106.199	168.014	61%	39%
Expertis	63.738	85.050	202.745	85.050	117.695	58%	42%
HCO	42.945	57.305	73.175	57.305	15.871	22%	78%
ABCG	12.205	16.286	87.499	16.286	71.213	81%	19%
Drienlanden	46.319	61.807	63.472	61.807	1.665	3%	97%
Consent	79.936	106.664	285.452	106.664	178.788	63%	37%
OCGH	22.541	30.078	86.275	30.078	56.197	65%	35%
Giralis	80.597	107.546	433.419	107.546	325.872	75%	25%
Noordwest	80.617	107.573	459.805	107.573	352.232	77%	23%
Cedin	100.740	134.424	207.138	134.424	72.713	35%	65%
Duin en bollenstreek	16.809	22.429	24.220	22.429	1.791	7%	93%
Eduniek	124.153	165.666	437.684	165.666	272.018	62%	38%
RPCZ	32.917	43.923	174.567	43.923	130.644	75%	25%
Centraal Nederland	43.664	58.264	186.861	58.264	128.597	69%	31%
Zaanstreek Waterlar	32.380	43.207	65.382	43.207	22.175	34%	66%
Driestar	31.197	41.628	188.264	41.628	146.636	78%	22%
CED Groep	156.433	208.740	235.411	208.740	26.671	11%	89%
SOM	40.970	54.669	114.539	54.669	59.870	52%	48%
Kersten onderwijsce	5.656	7.547	10.786	7.547	3.239	30%	70%
BCO	28.701	38.298	75.106	38.298	36.809	49%	51%
SAD	2.269	3.028	3.400	3.028	372	11%	89%
Onderwijsadvies	68.597	91.534	113.841	91.534	22.307	20%	80%
GH-GPC	18.484	24.664	81.612	24.664	56.948	70%	30%
Totaal	1.648.718	2.200.000	6.292.198	2.200.000	4.092.198	65,0%	35,0%

Overzicht besteding middelen flankerend beleid 2004 (amendement 29) naar organisatie

OBD	aantal leerlingen	budget	gedecclareerd	uitgekeerd	eigen rekening absoluut	%	% aandeel rijk
ABC	64.753	129.607	270.280	129.607	140.673	52%	48%
Ijselgroep	144.494	289.213	412.354	289.213	123.141	30%	70%
Kobalt	47.926	95.927	168.155	95.927	72.229	43%	57%
MHR	49.905	99.888	122.116	99.888	22.228	18%	82%
Edux	68.200	136.506	810.317	136.506	673.811	83%	17%
Vrije scholen de Kempen	13.376	26.773	28.812	26.773	2.039	7%	93%
Doba	19.225	38.480	57.632	38.480	19.152	33%	67%
Marant	29.384	58.814	314.186	58.814	255.372	81%	19%
Expertis	79.587	159.298	482.117	159.298	322.819	67%	33%
HCO	63.738	127.575	214.116	127.575	86.541	40%	60%
HCO	42.945	85.957	153.142	85.957	67.186	44%	56%
ABCG	12.205	24.429	74.436	24.429	50.007	67%	33%
Drielanden	46.319	92.710	114.563	92.710	21.853	19%	81%
Consent	79.936	159.996	214.207	159.996	54.210	25%	75%
OCGH	22.541	45.117	55.989	45.117	10.872	19%	81%
Giralis	80.597	161.319	1.552.531	161.319	1.391.212	90%	10%
Noordwest	80.617	161.359	451.792	161.359	290.433	64%	36%
Cedin	100.740	201.637	261.828	201.637	60.191	23%	77%
Duin en Bollenstreek	16.809	33.644	46.962	33.644	13.318	28%	72%
Eduniek	145.848	248.499	573.752	248.499	325.253	57%	43%
RPCZ	32.917	65.885	139.241	65.885	73.356	53%	47%
Centraal Nederland	43.664	87.396	183.210	87.396	95.814	52%	48%
Zaanstreek Waterlar	32.380	64.810	167.150	64.810	102.340	61%	39%
Driestar	31.197	62.443	166.945	62.443	104.502	63%	37%
CED Groep	156.433	313.109	457.436	313.109	144.327	32%	68%
SOM	40.970	82.004	745.419	82.004	663.415	89%	11%
Kersten onderwijsce	5.656	11.321	22.154	0	22.154	0%	0%
BCO	28.701	57.447	114.968	57.447	57.521	50%	50%
SAD	2.269	4.542	0	4.542	-4.542	0%	0%
Onderwijsadvies	68.597	137.301	534.876	137.301	397.576	74%	26%
GH-GPC	18.484	36.997	60.060	36.997	23.063	38%	62%
Totaal	1.670.413	3.300.000	8.970.746	3.288.679	5.682.067	63,3%	36,8%

**Overzicht besteding middelen flankerend beleid 2004 t/m 2008 (amendement 29)
naar organisatie en uitgavensoort**

OBD	frictie		kwaliteitszorg		comp.man.		sociaal beleid		accountant		totaal
	abs	%	abs	%	abs	%	abs	%	abs	%	
ABC	358.241	27%	40.781	3%	92.439	7%	817.983	62%	3.978	0%	1.313.422
Ijselgroep	852.390	36%	25.090	1%	368.006	16%	1.119.597	47%	8.000	0%	2.373.083
Kobalt	381.247	49%	20.183	3%	0	0%	372.053	48%	1.821	0%	775.304
MHR	286.471	50%	33.458	6%	0	0%	239.830	42%	8.986	2%	568.745
Edux	920.085	43%	101.416	5%	82.293	4%	1.045.725	49%	0	0%	2.149.519
Vrijescholen	62.339	58%	29.648	28%	0	0%	11.280	11%	3.536	3%	106.803
De Kempen	246.547	75%	9.634	3%	67.601	21%	690	0%	2.100	1%	326.571
DOBA + SOM	377.689	21%	119.500	7%	276.403	15%	1.018.222	57%	8.500	0%	1.800.313
Marant	342.495	28%	70.184	6%	38.444	3%	770.940	63%	0	0%	1.222.063
Expertis	365.730	33%	86.486	8%	213.031	19%	436.243	40%	2.380	0%	1.103.871
HCO	166.996	37%	100.668	23%	53.697	12%	120.091	27%	5.800	1%	447.251
ABCG	113.869	46%	52.083	21%	0	0%	76.645	31%	6.474	3%	249.071
Drielanden	230.378	55%	9.247	2%	0	0%	181.710	43%	0	0%	421.335
Consent	545.561	40%	10.135	1%	62.893	5%	726.738	54%	2.250	0%	1.347.577
OCGH	200.607	73%	14.697	5%	55.989	20%	0	0%	2.689	1%	273.982
Giralis	768.812	29%	198.237	7%	691.437	26%	1.033.380	38%	4.000	0%	2.695.867
Noordwest	1.641.831	87%	113.390	6%	68.928	4%	64.640	3%	4.600	0%	1.893.389
Cedin	431.104	49%	23.862	3%	0	0%	433.319	49%	0	0%	888.285
Duin en Bollenstre	122.872	83%	3.776	3%	13.205	9%	3.179	2%	5.141	3%	148.172
Eduniek	1.531.845	70%	77.566	4%	36.148	2%	536.203	25%	0	0%	2.181.761
RPCZ	559.296	71%	39.750	5%	0	0%	182.859	23%	4.500	1%	786.405
Centraal Nederlan	523.251	74%	65.223	9%	81.578	11%	37.257	5%	2.200	0%	709.509
Zaanstreek Water	295.424	65%	76.625	17%	45.069	10%	28.377	6%	6.070	1%	451.565
Driestar	463.781	87%	34.719	6%	34.026	6%	0	0%	1.750	0%	534.276
CED Groep	1.019.785	68%	94.531	6%	7.090	0%	373.568	25%	0	0%	1.494.974
Kersten Onderwijs	38.348	51%	33.748	45%	839	1%	780	1%	1.556	2%	75.271
BCO	410.285	94%	21.415	5%	5.760	1%	0	0%	1.200	0%	438.661
SAD	23.724	96%	0	0%	0	0%	0	0%	1.000	4%	24.724
Onderwijsadvies	451.072	39%	48.358	4%	27.940	2%	633.475	54%	3.372	0%	1.164.217
GH-GPC	267.643	70%	9.011	2%	7.501	2%	93.742	25%	1.850	0%	379.747
Totaal	13.999.717	49%	1.563.420	6%	2.330.317	8%	10.358.526	37%	93.752	0%	28.345.733

**Overzicht besteding middelen flankerend beleid 2008 (amendement 29)
naar organisatie en uitgavensoort**

OBD	frictie		kwaliteitszorg		comp.man.		sociaal beleid		accountant		totaal
	abs	%	abs	%	abs	%	abs	%	abs	%	
ABC	20.059	4%	0	0%	0	0%	454.492	96%	1.000	0%	475.551
Ijselgroep	85.510	31%	9.757	4%	106.683	39%	69.809	26%	2.000	1%	273.759
Kobalt	0	0%	0	0%	0	0%	0	0%	0	0%	0
MHR	43.612	53%	14.183	17%	0	0%	20.057	24%	4.986	6%	82.838
Edux	156.950	100%	0	0%	0	0%	0	0%	0	0%	156.950
Vrijescholen	13.318	66%	5.994	30%	0	0%	0	0%	889	4%	20.201
De Kempen	125.307	96%	2.052	2%	2.019	2%	0	0%	1.000	1%	130.378
DOBA + SOM	0	0%	0	0%	0	0%	227.037	100%	500	0%	227.537
Marant	0	0%	0	0%	0	0%	140.185	100%	0	0%	140.185
Expertis	8.167	4%	51.770	24%	16.897	8%	138.634	64%	595	0%	216.063
HCO	6.314	10%	24.087	38%	32.130	50%	0	0%	1.500	2%	64.031
ABCG	20.465	84%	2.090	9%	0	0%	0	0%	1.862	8%	24.417
Drielanden	21.505	29%	9.247	12%	0	0%	44.380	59%	0	0%	75.133
Consent	9.237	7%	0	0%	0	0%	131.290	93%	750	1%	141.277
OCGH	45.146	90%	3.727	7%	0	0%	0	0%	1.023	2%	49.896
Giralis	177.452	56%	14.967	5%	4.851	2%	119.457	38%	1.000	0%	317.728
Noordwest	217.646	81%	26.138	10%	0	0%	25.269	9%	1.150	0%	270.203
Cedin	14.507	10%	0	0%	0	0%	124.158	90%	0	0%	138.665
Duin en Bollenstre	22.828	73%	3.776	12%	3.670	12%	0	0%	1.100	4%	31.373
Eduniek	301.345	73%	18.297	4%	0	0%	93.242	23%	0	0%	412.884
RPCZ	74.432	52%	9.721	7%	0	0%	56.743	40%	1.000	1%	141.896
Centraal Nederlan	83.040	72%	10.427	9%	19.758	17%	1.839	2%	600	1%	115.664
Zaanstreek Water	74.470	78%	12.886	14%	0	0%	5.222	5%	2.500	3%	95.078
Driestar	49.799	83%	9.047	15%	0	0%	0	0%	1.000	2%	59.846
CED Groep	217.042	71%	8.404	3%	7.090	2%	74.000	24%	0	0%	306.536
Kersten Onderwijs	7.430	48%	7.676	49%	0	0%	0	0%	450	3%	15.556
BCO	75.230	92%	0	0%	5.760	7%	0	0%	1.200	1%	82.190
SAD	8.098	98%	0	0%	0	0%	0	0%	200	2%	8.298
Onderwijsadvies	23.754	15%	0	0%	0	0%	128.994	84%	595	0%	153.343
GH-GPC	56.166	64%	0	0%	0	0%	32.101	36%	0	0%	88.267
Totaal	1.958.829	45%	244.245	6%	198.859	5%	1.886.910	44%	26.900	1%	4.315.743

**Overzicht besteding middelen flankerend beleid 2007 (amendement 29)
naar organisatie en uitgavensoort**

OBD	frictie		kwaliteitszorg		comp.man.		sociaal beleid		accountant		totaal
	abs	%	abs	%	abs	%	abs	%	abs	%	
ABC	43.971	15%	9.482	3%	56.033	19%	181.679	62%	1.071	0%	292.237
Ijsselgroep	77.462	25%	0	0%	151.069	48%	83.385	27%	2.000	1%	313.916
Kobalt	0	0%	0	0%	0	0%	0	0%	0	0%	0
MHR	38.520	44%	0	0%	0	0%	47.330	54%	1.500	2%	87.350
Edux	152.081	100%	0	0%	0	0%	0	0%	0	0%	152.081
Vrijescholen	5.735	27%	3.347	16%	0	0%	11.280	53%	862	4%	21.225
De Kempen	37.363	75%	1.682	3%	10.956	22%	0	0%	0	0%	50.001
Doba	0	0%	0	0%	0	0%	39.082	96%	1.500	4%	40.582
Marant	4.542	3%	0	0%	0	0%	138.782	97%	0	0%	143.324
Expertis	10.119	4%	30.678	13%	18.830	8%	175.009	74%	595	0%	235.230
HCO	38.824	53%	33.455	45%	0	0%	0	0%	1.500	2%	73.780
ABCG	14.084	47%	14.602	48%	0	0%	0	0%	1.488	5%	30.174
Drienlanden	33.748	48%	0	0%	0	0%	35.888	52%	0	0%	69.636
Consent	203.893	42%	0	0%	0	0%	280.000	58%	500	0%	484.393
OCGH	31.276	85%	4.693	13%	0	0%	0	0%	857	2%	36.826
Giralis	78.216	35%	18.173	8%	128.820	57%	0	0%	1.000	0%	226.208
Noordwest	352.501	95%	18.343	5%	0	0%	0	0%	1.150	0%	371.994
Cedin	0	0%	8.590	6%	0	0%	132.563	94%	0	0%	141.153
Duin en bollenstre	18.486	80%	0	0%	3.585	16%	0	0%	1.030	4%	23.101
Eduziek	204.712	100%	0	0%	0	0%	0	0%	0	0%	204.712
RPCZ	125.481	76%	9.519	6%	0	0%	28.145	17%	1.000	1%	164.145
Centraal Nederlan	93.123	86%	2.268	2%	10.682	10%	1.483	1%	600	1%	108.156
Zaanstreek Water	50.836	66%	10.618	14%	7.616	10%	7.233	9%	1.190	2%	77.493
Driestar	28.450	51%	2.243	4%	24.734	44%	0	0%	250	0%	55.677
CED Groep	156.488	62%	0	0%	0	0%	95.634	38%	0	0%	252.122
SOM	0	0%	0	0%	0	0%	107.519	99%	1.500	1%	109.019
Kersten onderwijs	8.722	44%	10.603	54%	0	0%	0	0%	381	2%	19.706
BCO	104.172	87%	15.711	13%	0	0%	0	0%	0	0%	119.884
SAD	9.426	98%	0	0%	0	0%	0	0%	200	2%	9.626
Onderwijsadvies	48.057	32%	10.461	7%	0	0%	88.575	60%	1.000	1%	148.093
GH-GPC	32.987	69%	0	0%	0	0%	13.587	28%	1.200	3%	47.774
Totaal	2.003.275	49%	204.470	5%	412.325	10%	1.467.174	36%	22.373	1%	4.109.616

**Overzicht besteding middelen flankerend beleid 2006 (amendement 29)
naar organisatie en uitgavensoort**

OBD	frictie		kwaliteitszorg		comp.man.		sociaal beleid		accountant		totaal
	abs	%	abs	%	abs	%	abs	%	abs	%	
ABC	25.231	18%	17.448	12%	0	0%	97.792	69%	941	1%	141.412
Ijselgroep	139.411	23%	12.482	2%	28.315	5%	419.233	70%	2.000	0%	601.441
Kobalt	28.686	9%	0	0%	0	0%	300.023	91%	1.071	0%	329.780
MHR	30.610	39%	19.275	25%	0	0%	26.801	34%	1.000	1%	77.686
Edux	0	0%	0	0%	0	0%	144.667	100%	0	0%	144.667
Vrijescholen	14.239	76%	3.505	19%	0	0%	0	0%	893	5%	18.637
De Kempen	22.266	64%	1.045	3%	10.426	30%	690	2%	600	2%	35.027
Doba	20.108	39%	15.144	30%	0	0%	14.158	28%	1.600	3%	51.009
Marant	52.696	29%	0	0%	0	0%	129.528	71%	0	0%	182.224
Expertis	133.705	57%	0	0%	22.941	10%	78.476	33%	595	0%	235.716
HCO	38.483	46%	15.458	19%	0	0%	27.781	33%	1.400	2%	83.123
ABCG	28.797	88%	2.261	7%	0	0%	0	0%	1.488	5%	32.546
Drienlanden	23.129	23%	0	0%	0	0%	75.402	77%	0	0%	98.531
Consent	151.762	68%	7.283	3%	62.703	28%	0	0%	500	0%	222.249
OCGH	37.910	84%	6.277	14%	0	0%	0	0%	809	2%	44.996
Giralis	71.910	43%	38.854	23%	54.217	33%	0	0%	1.000	1%	165.981
Noordwest	319.712	94%	18.733	6%	0	0%	0	0%	1.150	0%	339.595
Cedin	60.011	43%	3.347	2%	0	0%	76.144	55%	0	0%	139.502
Duin en bollenstre	15.256	68%	0	0%	5.950	26%	0	0%	1.309	6%	22.515
Eduiek	409.102	74%	0	0%	0	0%	143.627	26%	0	0%	552.729
RPCZ	121.588	73%	3.311	2%	0	0%	40.657	24%	1.000	1%	166.556
Centraal Nederlan	76.132	66%	10.544	9%	24.634	21%	3.808	3%	500	0%	115.618
Zaanstreek Water	20.646	44%	8.668	19%	1.447	3%	14.511	31%	1.190	3%	46.462
Driestar	48.071	76%	15.223	24%	0	0%	0	0%	250	0%	63.544
CED Groep	243.470	100%	0	0%	0	0%	0	0%	0	0%	243.470
SOM	0	0%	0	0%	0	0%	128.535	99%	800	1%	129.335
Kersten onderwijs	2.700	38%	3.793	54%	208	3%	0	0%	368	5%	7.069
BCO	40.809	88%	5.704	12%	0	0%	0	0%	0	0%	46.513
SAD	3.100	91%	0	0%	0	0%	0	0%	300	9%	3.400
Onderwijsadvies	44.219	21%	6.878	3%	0	0%	162.083	76%	884	0%	214.064
GH-GPC	66.579	65%	4.668	5%	2.141	2%	28.646	28%	0	0%	102.034
Totaal	2.290.353	49%	219.904	5%	212.983	5%	1.912.572	41%	21.648	0%	4.657.430

**Overzicht besteding middelen flankerend beleid 2005 (amendement 29)
naar organisatie en uitgavensoort**

OBD	frictie		kwaliteitszorg		comp.man.		sociaal beleid		accountant		totaal
	abs	%	abs	%	abs	%	abs	%	abs	%	
ABC	34.882	26%	5.600	4%	8.475	6%	84.020	63%	966	1%	133.942
Ijsselgroep	204.764	27%	0	0%	17.679	2%	547.170	71%	2.000	0%	771.613
Kobalt	184.406	66%	20.183	7%	0	0%	72.030	26%	750	0%	277.369
MHR	51.613	26%	0	0%	0	0%	145.642	73%	1.500	1%	198.755
Edux	78.891	9%	4.751	1%	12.021	1%	789.841	89%	0	0%	885.504
Vrijescholen	14.774	82%	2.262	13%	0	0%	0	0%	893	5%	17.929
De Kempen	25.049	47%	0	0%	27.985	52%	0	0%	500	1%	53.534
Doba	30.622	45%	18.900	28%	0	0%	17.365	25%	1.800	3%	68.687
Marant	49.981	18%	0	0%	0	0%	224.232	82%	0	0%	274.213
Expertis	133.084	66%	0	0%	34.692	17%	34.374	17%	595	0%	202.745
HCO	21.471	29%	12.719	17%	3.639	5%	33.946	46%	1.400	2%	73.175
ABCG	6.956	8%	2.262	3%	0	0%	76.645	88%	1.636	2%	87.499
Drienlanden	37.432	59%	0	0%	0	0%	26.040	41%	0	0%	63.472
Consent	45.363	16%	0	0%	0	0%	239.589	84%	500	0%	285.452
OCGH	86.275	100%	0	0%	0	0%	0	0%	0	0%	86.275
Giralis	323.630	75%	40.415	9%	68.374	16%	0	0%	1.000	0%	433.419
Noordwest	405.539	88%	26.424	6%	20.396	4%	6.296	1%	1.150	0%	459.805
Cedin	126.401	61%	3.393	2%	0	0%	77.344	37%	0	0%	207.138
Duin en bollenstre	22.519	93%	0	0%	0	0%	0	0%	1.702	7%	24.220
Eduiek	237.684	54%	0	0%	0	0%	200.000	46%	0	0%	437.684
RPCZ	130.607	75%	5.071	3%	0	0%	37.389	21%	1.500	1%	174.567
Centraal Nederlan	151.975	81%	15.989	9%	14.731	8%	3.666	2%	500	0%	186.861
Zaanstreek Water	32.144	49%	26.938	41%	3.699	6%	1.412	2%	1.190	2%	65.382
Driestar	185.752	99%	2.262	1%	0	0%	0	0%	250	0%	188.264
CED Groep	235.411	100%	0	0%	0	0%	0	0%	0	0%	235.411
SOM	0	0%	0	0%	0	0%	113.739	99%	800	1%	114.539
Kersten onderwijs	6.180	57%	2.839	26%	631	6%	780	7%	357	3%	10.786
BCO	75.106	100%	0	0%	0	0%	0	0%	0	0%	75.106
SAD	3.100	91%	0	0%	0	0%	0	0%	300	9%	3.400
Onderwijsadvies	22.020	19%	17.711	16%	27.940	25%	45.277	40%	893	1%	113.841
GH-GPC	67.314	82%	1.130	1%	250	0%	12.268	15%	650	1%	81.612
Totaal	3.030.961	48%	208.850	3%	240.512	4%	2.789.073	44%	22.832	0%	6.292.198

**Overzicht besteding middelen flankerend beleid 2004 (amendement 29)
naar organisatie en uitgavensoort**

OBD	frictie		kwaliteitszorg		comp.man.		sociaal beleid		totaal
	abs	%	abs	%	abs	%	abs	%	
ABC	234.098	87%	8.251	3%	27.931	10%	0	0%	270.280
Ijselgroep	345.243	84%	2.851	1%	64.260	16%	0	0%	412.354
Kobalt	168.155	100%	0	0%	0	0%	0	0%	168.155
MHR	122.116	100%	0	0%	0	0%	0	0%	122.116
Edux	532.163	66%	96.665	12%	70.272	9%	111.217	14%	810.317
Vrije scholen	14.272	50%	14.540	50%	0	0%	0	0%	28.812
de Kempen	36.562	63%	4.855	8%	16.215	28%	0	0%	57.632
Doba	152.193	48%	58.245	19%	103.748	33%	0	0%	314.186
Marant	235.276	49%	70.184	15%	38.444	8%	138.213	29%	482.117
Expertis	80.655	38%	4.039	2%	119.671	56%	9.751	5%	214.116
HCO	61.903	40%	14.948	10%	17.928	12%	58.364	38%	153.142
ABCG	43.569	59%	30.867	41%	0	0%	0	0%	74.436
Drielanden	114.563	100%	0	0%	0	0%	0	0%	114.563
Consent	135.306	63%	2.851	1%	190	0%	75.859	35%	214.207
OCGH	0	0%	0	0%	55.989	100%	0	0%	55.989
Giralis	117.604	8%	85.827	6%	435.176	28%	913.923	59%	1.552.531
Noordwest	346.433	77%	23.752	5%	48.532	11%	33.075	7%	451.792
Cedin	230.186	88%	8.532	3%	0	0%	23.110	9%	261.828
Duin en Bollenstre	43.784	93%	0	0%	0	0%	3.179	7%	46.962
Eduniek	379.002	66%	59.269	10%	36.148	6%	99.334	17%	573.752
RPCZ	107.188	77%	12.128	9%	0	0%	19.925	14%	139.241
Centraal Nederlan	118.981	65%	25.995	14%	11.773	6%	26.461	14%	183.210
Zaanstreek Water	117.328	70%	17.515	10%	32.307	19%	0	0%	167.150
Driestar	151.709	91%	5.944	4%	9.292	6%	0	0%	166.945
CED Groep	167.374	37%	86.127	19%	0	0%	203.934	45%	457.436
SOM	174.766	23%	27.211	4%	172.655	23%	370.787	50%	745.419
Kersten onderwijs	13.317	0%	8.837	0%	0	0%	0	0%	22.154
BCO	114.968	100%	0	0%	0	0%	0	0%	114.968
SAD	0	0%	0	0%	0	0%	0	0%	0
Onderwijsadvies	313.022	59%	13.308	2%	0	0%	208.546	39%	534.876
GH-GPC	44.597	74%	3.213	5%	5.110	9%	7.140	12%	60.060
Totaal	4.716.333	53%	685.955	8%	1.265.641	14%	2.302.817	26%	8.970.746